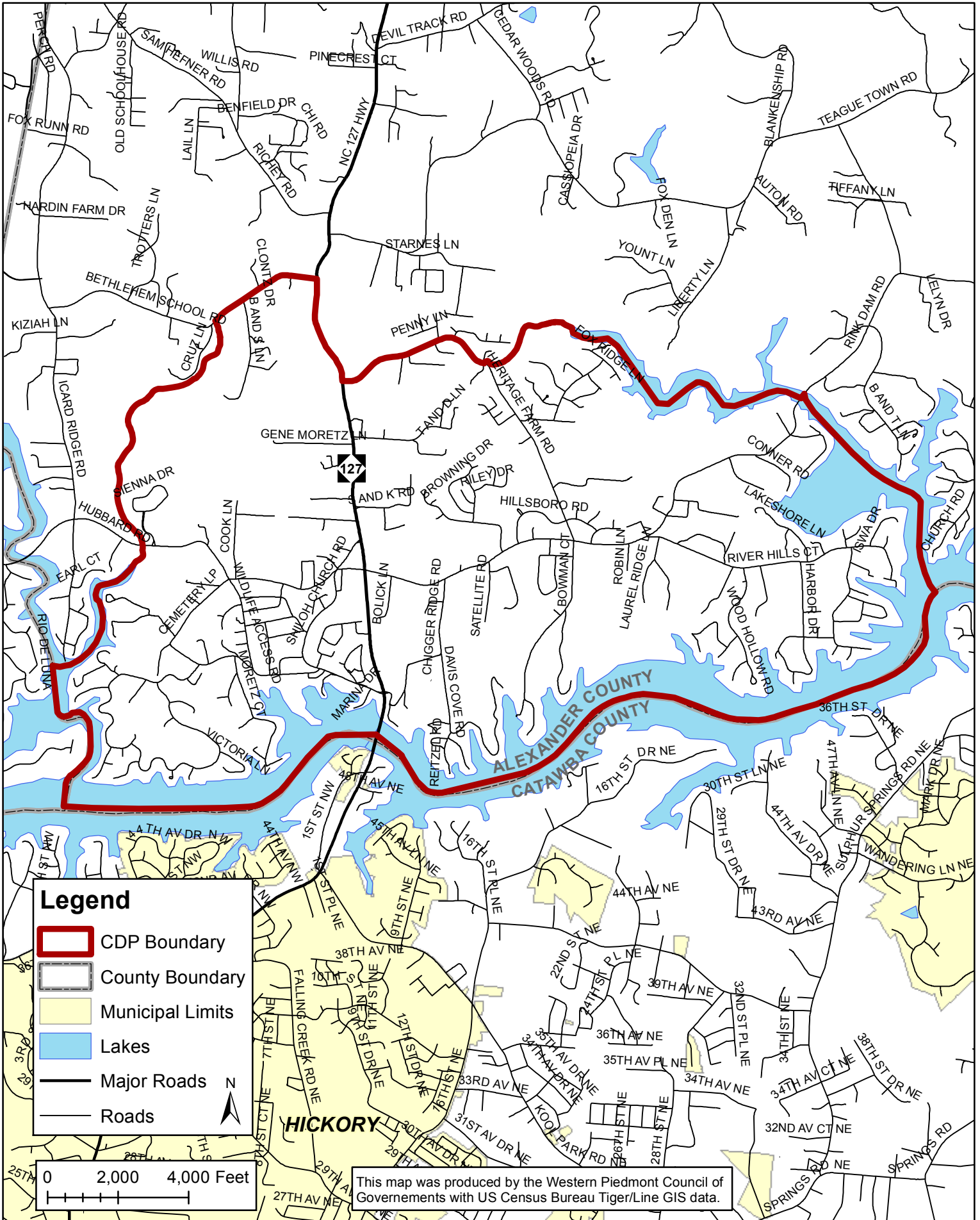


Bethlehem Census Designated Place (CDP)



Selected Social Characteristics in the United States



Note: The table shown may have been modified by user selections. Some information may be missing.

DATA NOTES

TABLE ID:	DP02
SURVEY/PROGRAM:	American Community Survey
VINTAGE:	2022
DATASET:	ACSDP5Y2022
PRODUCT:	ACS 5-Year Estimates Data Profiles
UNIVERSE:	None
MLA:	U.S. Census Bureau. "Selected Social Characteristics in the United States." American Community Survey, ACS 5-Year Estimates Data Profiles, Table DP02, 2022, https://data.census.gov/table/ACSDP5Y2022.DP02?q=dp02&g=160XX00US3705530 . Accessed on December 7, 2023.
FTP URL:	None
API URL:	https://api.census.gov/data/2022/acs/acs5/profile

USER SELECTIONS

TABLES	DP02
GEOS	Bethlehem CDP, North Carolina

EXCLUDED COLUMNS None

APPLIED FILTERS None

APPLIED SORTS None

PIVOT & GROUPING

PIVOT COLUMNS	None
PIVOT MODE	Off
ROW GROUPS	None
VALUE COLUMNS	None

WEB ADDRESS <https://data.census.gov/table/ACSDP5Y2022.DP02?q=dp02&g=160XX00US3705530>

TABLE NOTES

Although the American Community Survey (ACS) produces population, demographic and housing unit estimates, the decennial census is the official source of population totals for April 1st of each decennial year. In between censuses, the Census Bureau's Population Estimates Program produces and disseminates the official estimates of the population for the nation, states, counties, cities, and towns and estimates of housing units for states and counties.

Information about the American Community Survey (ACS) can be found on the ACS website. Supporting documentation including code lists, subject definitions, data accuracy, and statistical testing, and a full list of ACS tables and table shells (without estimates) can be found on the Technical Documentation section of the ACS website.

Sample size and data quality measures (including coverage rates, allocation rates, and response rates) can be found on the American Community Survey website in the Methodology section.

Source: U.S. Census Bureau, 2018-2022 American Community Survey 5-Year Estimates

Data are based on a sample and are subject to sampling variability. The degree of uncertainty for an estimate arising from sampling variability is represented through the use of a margin of error. The value shown here is the 90 percent margin of error. The margin of error can be interpreted roughly as providing a 90 percent probability that the interval defined by the estimate minus the margin of error and the estimate plus the margin of error (the lower and upper confidence bounds) contains the true value. In addition to sampling variability, the ACS estimates are subject to nonsampling error (for a discussion of nonsampling variability, see ACS Technical Documentation). The effect of nonsampling error is not represented in these tables.

	<p>Ancestry listed in this table refers to the total number of people who responded with a particular ancestry; for example, the estimate given for German represents the number of people who listed German as either their first or second ancestry. This table lists only the largest ancestry groups; see the Detailed Tables for more categories. Race and Hispanic origin groups are not included in this table because data for those groups come from the Race and Hispanic origin questions rather than the ancestry question (see Demographic Table).</p>
	<p>Data for year of entry of the native population reflect the year of entry into the U.S. by people who were born in Puerto Rico or U.S. Island Areas or born outside the U.S. to a U.S. citizen parent and who subsequently moved to the U.S.</p>
	<p>Methodological changes to citizenship edits may have affected citizenship data for those born in American Samoa. Users should be aware of these changes when using 2018 data or multi-year data containing data from 2018. For more information, see: American Samoa Citizenship User Note.</p>
	<p>The Census Bureau introduced a new set of disability questions in the 2008 ACS questionnaire. Accordingly, comparisons of disability data from 2008 or later with data from prior years are not recommended. For more information on these questions and their evaluation in the 2006 ACS Content Test, see the Evaluation Report Covering Disability.</p>
	<p>The category "with a broadband Internet subscription" refers to those who said "Yes" to at least one of the following types of Internet subscriptions: Broadband such as cable, fiber optic, or DSL; a cellular data plan; satellite; a fixed wireless subscription; or other non-dial up subscription types.</p>
	<p>An Internet "subscription" refers to a type of service that someone pays for to access the Internet such as a cellular data plan, broadband such as cable, fiber optic or DSL, or other type of service. This will normally refer to a service that someone is billed for directly for Internet alone or sometimes as part of a bundle.</p>
	<p>With a computer includes those who said "Yes" to at least one of the following types of computers: Desktop or laptop; smartphone; tablet or other portable wireless computer; or some other type of computer.</p>
	<p>The "children of the householder" and "own children of the householder" concepts are combined in these estimates. For more information, please see the following User Note.</p>
	<p>The 2018-2022 American Community Survey (ACS) data generally reflect the March 2020 Office of Management and Budget (OMB) delineations of metropolitan and micropolitan statistical areas. In certain instances, the names, codes, and boundaries of the principal cities shown in ACS tables may differ from the OMB delineation lists due to differences in the effective dates of the geographic entities.</p>
	<p>Estimates of urban and rural populations, housing units, and characteristics reflect boundaries of urban areas defined based on 2020 Census data. As a result, data for urban and rural areas from the ACS do not necessarily reflect the results of ongoing urbanization.</p>
	<p>Explanation of Symbols:- The estimate could not be computed because there were an insufficient number of sample observations. For a ratio of medians estimate, one or both of the median estimates falls in the lowest interval or highest interval of an open-ended distribution. For a 5-year median estimate, the margin of error associated with a median was larger than the median itself.N The estimate or margin of error cannot be displayed because there were an insufficient number of sample cases in the selected geographic area. (X) The estimate or margin of error is not applicable or not available.median- The median falls in the lowest interval of an open-ended distribution (for example "2,500-")median+ The median falls in the highest interval of an open-ended distribution (for example "250,000+").** The margin of error could not be computed because there were an insufficient number of sample observations.*** The margin of error could not be computed because the median falls in the lowest interval or highest interval of an open-ended distribution.***** A margin of error is not appropriate because the corresponding estimate is controlled to an independent population or housing estimate. Effectively, the corresponding estimate has no sampling error and the margin of error may be treated as zero.</p>
COLUMN NOTES	None

Table: ACSDP5Y2022.DP02

	Bethlehem CDP, North Carolina			
Label	Estimate	Margin of Error	Percent	Percent Margin of Error
HOUSEHOLDS BY TYPE				
Total households	1,617	±204	1,617	(X)
Married-couple household	898	±200	55.5%	±11.2
With children of the householder under 18 years	169	±88	10.5%	±5.4
Cohabiting couple household	23	±24	1.4%	±1.5
With children of the householder under 18 years	0	±14	0.0%	±2.6
Male householder, no spouse/partner present	312	±168	19.3%	±9.5
With children of the householder under 18 years	68	±96	4.2%	±5.9
Householder living alone	221	±131	13.7%	±7.6
65 years and over	78	±62	4.8%	±3.7
Female householder, no spouse/partner present	384	±143	23.7%	±8.6
With children of the householder under 18 years	54	±70	3.3%	±4.3
Householder living alone	214	±85	13.2%	±5.3
65 years and over	106	±63	6.6%	±3.9
Households with one or more people under 18 years	291	±144	18.0%	±8.4
Households with one or more people 65 years and over	588	±140	36.4%	±8.0
Average household size	2.28	±0.27	(X)	(X)
Average family size	2.76	±0.32	(X)	(X)
RELATIONSHIP				
Population in households	3,688	±576	3,688	(X)
Householder	1,617	±204	43.8%	±5.2
Spouse	967	±218	26.2%	±4.8
Unmarried partner	43	±42	1.2%	±1.1
Child	855	±318	23.2%	±6.1
Other relatives	191	±163	5.2%	±4.2
Other nonrelatives	15	±25	0.4%	±0.7
MARITAL STATUS				
Males 15 years and over	1,679	±267	1,679	(X)
Never married	331	±148	19.7%	±7.7
Now married, except separated	1,029	±249	61.3%	±13.6
Separated	39	±65	2.3%	±3.8
Widowed	120	±92	7.1%	±5.4
Divorced	160	±119	9.5%	±6.7

Table: ACSDP5Y2022.DP02

	Bethlehem CDP, North Carolina			
Label	Estimate	Margin of Error	Percent	Percent Margin of Error
Females 15 years and over	1,608	±296	1,608	(X)
Never married	360	±143	22.4%	±6.7
Now married, except separated	894	±212	55.6%	±9.0
Separated	14	±24	0.9%	±1.5
Widowed	234	±113	14.6%	±6.8
Divorced	106	±84	6.6%	±5.2
FERTILITY				
Number of women 15 to 50 years old who had a birth in the past 12 months	0	±14	0	(X)
Unmarried women (widowed, divorced, and never married)	0	±14	-	**
Per 1,000 unmarried women	0	±104	(X)	(X)
Per 1,000 women 15 to 50 years old	0	±58	(X)	(X)
Per 1,000 women 15 to 19 years old	0	±285	(X)	(X)
Per 1,000 women 20 to 34 years old	0	±194	(X)	(X)
Per 1,000 women 35 to 50 years old	0	±102	(X)	(X)
GRANDPARENTS				
Number of grandparents living with own grandchildren under 18 years	0	±14	0	(X)
Grandparents responsible for grandchildren	0	±14	-	**
Years responsible for grandchildren				
Less than 1 year	0	±14	-	**
1 or 2 years	0	±14	-	**
3 or 4 years	0	±14	-	**
5 or more years	0	±14	-	**
Number of grandparents responsible for own grandchildren under 18 years	0	±14	0	(X)
Who are female	0	±14	-	**
Who are married	0	±14	-	**
SCHOOL ENROLLMENT				

Table: ACSDP5Y2022.DP02

	Bethlehem CDP, North Carolina			
Label	Estimate	Margin of Error	Percent	Percent Margin of Error
Population 3 years and over enrolled in school	713	±304	713	(X)
Nursery school, preschool	30	±36	4.2%	±5.4
Kindergarten	15	±24	2.1%	±3.2
Elementary school (grades 1-8)	345	±211	48.4%	±16.7
High school (grades 9-12)	219	±148	30.7%	±17.5
College or graduate school	104	±89	14.6%	±11.5
EDUCATIONAL ATTAINMENT				
Population 25 years and over	2,961	±389	2,961	(X)
Less than 9th grade	95	±95	3.2%	±3.1
9th to 12th grade, no diploma	110	±93	3.7%	±3.0
High school graduate (includes equivalency)	707	±233	23.9%	±6.7
Some college, no degree	451	±147	15.2%	±4.8
Associate's degree	441	±154	14.9%	±4.8
Bachelor's degree	770	±266	26.0%	±8.7
Graduate or professional degree	387	±159	13.1%	±5.2
High school graduate or higher	2,756	±356	93.1%	±4.3
Bachelor's degree or higher	1,157	±320	39.1%	±10.2
VETERAN STATUS				
Civilian population 18 years and over	3,170	±458	3,170	(X)
Civilian veterans	279	±127	8.8%	±4.0
DISABILITY STATUS OF THE CIVILIAN NONINSTITUTIONALIZED POPULATION				
Total Civilian Noninstitutionalized Population	3,688	±576	3,688	(X)
With a disability	576	±236	15.6%	±6.7
Under 18 years	518	±244	518	(X)
With a disability	21	±34	4.1%	±6.6
18 to 64 years	2,277	±433	2,277	(X)
With a disability	264	±171	11.6%	±7.5
65 years and over	893	±225	893	(X)
With a disability	291	±119	32.6%	±9.8
RESIDENCE 1 YEAR AGO				
Population 1 year and over	3,688	±576	3,688	(X)
Same house	3,317	±556	89.9%	±4.8

Table: ACSDP5Y2022.DP02

	Bethlehem CDP, North Carolina			
Label	Estimate	Margin of Error	Percent	Percent Margin of Error
Different house (in the U.S. or abroad)	371	±183	10.1%	±4.8
Different house in the U.S.	371	±183	10.1%	±4.8
Same county	132	±83	3.6%	±2.3
Different county	239	±155	6.5%	±4.0
Same state	149	±117	4.0%	±3.1
Different state	90	±84	2.4%	±2.2
Abroad	0	±14	0.0%	±1.1
PLACE OF BIRTH				
Total population	3,688	±576	3,688	(X)
Native	3,494	±558	94.7%	±3.0
Born in United States	3,475	±553	94.2%	±3.0
State of residence	2,258	±491	61.2%	±8.0
Different state	1,217	±337	33.0%	±8.4
Born in Puerto Rico, U.S. Island areas, or born abroad to American parent(s)	19	±33	0.5%	±0.9
Foreign born	194	±113	5.3%	±3.0
U.S. CITIZENSHIP STATUS				
Foreign-born population	194	±113	194	(X)
Naturalized U.S. citizen	194	±113	100.0%	±19.5
Not a U.S. citizen	0	±14	0.0%	±19.5
YEAR OF ENTRY				
Population born outside the United States	213	±116	213	(X)
Native	19	±33	19	(X)
Entered 2010 or later	0	±14	0.0%	±77.8
Entered before 2010	19	±33	100.0%	±77.8
Foreign born	194	±113	194	(X)
Entered 2010 or later	0	±14	0.0%	±19.5
Entered before 2010	194	±113	100.0%	±19.5
WORLD REGION OF BIRTH OF FOREIGN BORN				
Foreign-born population, excluding population born at sea	194	±113	194	(X)
Europe	11	±17	5.7%	±9.2
Asia	142	±84	73.2%	±28.9
Africa	0	±14	0.0%	±19.5
Oceania	0	±14	0.0%	±19.5
Latin America	41	±68	21.1%	±28.4
Northern America	0	±14	0.0%	±19.5
LANGUAGE SPOKEN AT HOME				

Table: ACSDP5Y2022.DP02

	Bethlehem CDP, North Carolina			
Label	Estimate	Margin of Error	Percent	Percent Margin of Error
Population 5 years and over	3,647	±569	3,647	(X)
English only	3,424	±559	93.9%	±4.1
Language other than English	223	±153	6.1%	±4.1
Speak English less than "very well"	0	±14	0.0%	±1.2
Spanish	135	±124	3.7%	±3.4
Speak English less than "very well"	0	±14	0.0%	±1.2
Other Indo-European languages	0	±14	0.0%	±1.2
Speak English less than "very well"	0	±14	0.0%	±1.2
Asian and Pacific Islander languages	88	±93	2.4%	±2.6
Speak English less than "very well"	0	±14	0.0%	±1.2
Other languages	0	±14	0.0%	±1.2
Speak English less than "very well"	0	±14	0.0%	±1.2
ANCESTRY				
Total population	3,688	±576	3,688	(X)
American	511	±240	13.9%	±6.5
Arab	0	±14	0.0%	±1.1
Czech	0	±14	0.0%	±1.1
Danish	0	±14	0.0%	±1.1
Dutch	14	±23	0.4%	±0.6
English	320	±149	8.7%	±3.9
French (except Basque)	27	±32	0.7%	±0.9
French Canadian	10	±16	0.3%	±0.4
German	932	±333	25.3%	±7.9
Greek	0	±14	0.0%	±1.1
Hungarian	0	±14	0.0%	±1.1
Irish	780	±400	21.1%	±10.0
Italian	199	±188	5.4%	±5.2
Lithuanian	0	±14	0.0%	±1.1
Norwegian	0	±14	0.0%	±1.1
Polish	147	±185	4.0%	±4.9
Portuguese	11	±19	0.3%	±0.5
Russian	11	±18	0.3%	±0.5
Scotch-Irish	59	±62	1.6%	±1.7
Scottish	91	±54	2.5%	±1.5
Slovak	13	±23	0.4%	±0.6
Subsaharan African	0	±14	0.0%	±1.1

Table: ACSDP5Y2022.DP02

	Bethlehem CDP, North Carolina			
Label	Estimate	Margin of Error	Percent	Percent Margin of Error
Swedish	32	±52	0.9%	±1.4
Swiss	0	±14	0.0%	±1.1
Ukrainian	0	±14	0.0%	±1.1
Welsh	14	±23	0.4%	±0.6
West Indian (excluding Hispanic origin groups)	0	±14	0.0%	±1.1
COMPUTERS AND INTERNET USE				
Total households	1,617	±204	1,617	(X)
With a computer	1,574	±206	97.3%	±2.2
With a broadband Internet subscription	1,529	±210	94.6%	±3.1



Selected Economic Characteristics

Note: The table shown may have been modified by user selections. Some information may be missing.

DATA NOTES

TABLE ID:	DP03
SURVEY/PROGRAM:	American Community Survey
VINTAGE:	2022
DATASET:	ACSDP5Y2022
PRODUCT:	ACS 5-Year Estimates Data Profiles
UNIVERSE:	None
MLA:	U.S. Census Bureau. "Selected Economic Characteristics." American Community Survey, ACS 5-Year Estimates Data Profiles, Table DP03, 2022, https://data.census.gov/table/ACSDP5Y2022.DP03?q=dp03&g=160XX00US3705530 . Accessed on December 7, 2023.
FTP URL:	None
API URL:	https://api.census.gov/data/2022/acs/acs5/profile

USER SELECTIONS

TABLES	DP03
GEOS	Bethlehem CDP, North Carolina

EXCLUDED COLUMNS None

APPLIED FILTERS None

APPLIED SORTS None

PIVOT & GROUPING

PIVOT COLUMNS	None
PIVOT MODE	Off
ROW GROUPS	None
VALUE COLUMNS	None

WEB ADDRESS <https://data.census.gov/table/ACSDP5Y2022.DP03?q=dp03&g=160XX00US3705530>

TABLE NOTES

Although the American Community Survey (ACS) produces population, demographic and housing unit estimates, the decennial census is the official source of population totals for April 1st of each decennial year. In between censuses, the Census Bureau's Population Estimates Program produces and disseminates the official estimates of the population for the nation, states, counties, cities, and towns and estimates of housing units for states and counties.

Information about the American Community Survey (ACS) can be found on the ACS website. Supporting documentation including code lists, subject definitions, data accuracy, and statistical testing, and a full list of ACS tables and table shells (without estimates) can be found on the Technical Documentation section of the ACS website.

Sample size and data quality measures (including coverage rates, allocation rates, and response rates) can be found on the American Community Survey website in the Methodology section.

Source: U.S. Census Bureau, 2018-2022 American Community Survey 5-Year Estimates

Data are based on a sample and are subject to sampling variability. The degree of uncertainty for an estimate arising from sampling variability is represented through the use of a margin of error. The value shown here is the 90 percent margin of error. The margin of error can be interpreted roughly as providing a 90 percent probability that the interval defined by the estimate minus the margin of error and the estimate plus the margin of error (the lower and upper confidence bounds) contains the true value. In addition to sampling variability, the ACS estimates are subject to nonsampling error (for a discussion of nonsampling variability, see ACS Technical Documentation). The effect of nonsampling error is not represented in these tables.

	Employment and unemployment estimates may vary from the official labor force data released by the Bureau of Labor Statistics because of differences in survey design and data collection. For guidance on differences in employment and unemployment estimates from different sources go to Labor Force Guidance.
	Workers include members of the Armed Forces and civilians who were at work last week.
	Industry titles and their 4-digit codes are based on the 2017 North American Industry Classification System. The Industry categories adhere to the guidelines issued in Clarification Memorandum No. 2, "NAICS Alternate Aggregation Structure for Use By U.S. Statistical Agencies," issued by the Office of Management and Budget.
	Occupation titles and their 4-digit codes are based on the 2018 Standard Occupational Classification.
	Logical coverage edits applying a rules-based assignment of Medicaid, Medicare and military health coverage were added as of 2009 -- please see https://www.census.gov/library/working-papers/2010/demo/coverage_edits_final.html for more details. Select geographies of 2008 data comparable to the 2009 and later tables are available at https://www.census.gov/data/tables/time-series/acs/1-year-re-run-health-insurance.html . The health insurance coverage category names were modified in 2010. See https://www.census.gov/topics/health/health-insurance/about/glossary.html#par_textimage_18 for a list of the insurance type definitions.
	Beginning in 2017, selected variable categories were updated, including age-categories, income-to-poverty ratio (IPR) categories, and the age universe for certain employment and education variables. See user note entitled "Health Insurance Table Updates" for further details.
	Several means of transportation to work categories were updated in 2019. For more information, see: Change to Means of Transportation.
	Between 2018 and 2019 the American Community Survey retirement income question changed. These changes resulted in an increase in both the number of households reporting retirement income and higher aggregate retirement income at the national level. For more information see Changes to the Retirement Income Question .
	The categories for relationship to householder were revised in 2019. For more information see Revisions to the Relationship to Household item.
	In 2019, methodological changes were made to the class of worker question. These changes involved modifications to the question wording, the category wording, and the visual format of the categories on the questionnaire. The format for the class of worker categories are now listed under the headings "Private Sector Employee," "Government Employee," and "Self-Employed or Other." Additionally, the category of Active Duty was added as one of the response categories under the "Government Employee" section for the mail questionnaire. For more detailed information about the 2019 changes, see the 2016 American Community Survey Content Test Report for Class of Worker located at http://www.census.gov/library/working-papers/2017/acs/2017_Martinez_01.html .
	Beginning in data year 2019, respondents to the Weeks Worked question provided an integer value for the number of weeks worked. For data years 2008 through 2018, respondents selected a category corresponding to the number of weeks worked.
	The 2018-2022 American Community Survey (ACS) data generally reflect the March 2020 Office of Management and Budget (OMB) delineations of metropolitan and micropolitan statistical areas. In certain instances, the names, codes, and boundaries of the principal cities shown in ACS tables may differ from the OMB delineation lists due to differences in the effective dates of the geographic entities.
	Estimates of urban and rural populations, housing units, and characteristics reflect boundaries of urban areas defined based on 2020 Census data. As a result, data for urban and rural areas from the ACS do not necessarily reflect the results of ongoing urbanization.
	Explanation of Symbols:- The estimate could not be computed because there were an insufficient number of sample observations. For a ratio of medians estimate, one or both of the median estimates falls in the lowest interval or highest interval of an open-ended distribution. For a 5-year median estimate, the margin of error associated with a median was larger than the median itself.N The estimate or margin of error cannot be displayed because there were an insufficient number of sample cases in the selected geographic area. (X) The estimate or margin of error is not applicable or not available.median- The median falls in the lowest interval of an open-ended distribution (for example "2,500-")median+ The median falls in the highest interval of an open-ended distribution (for example "250,000+").** The margin of error could not be computed because there were an insufficient number of sample observations.*** The margin of error could not be computed because the median falls in the lowest interval or highest interval of an open-ended distribution.**** A margin of error is not appropriate because the corresponding estimate is controlled to an independent population or housing estimate. Effectively, the corresponding estimate has no sampling error and the margin of error may be treated as zero.
COLUMN NOTES	None

Table: ACSDP5Y2022.DP03

	Bethlehem CDP, North Carolina			
Label	Estimate	Margin of Error	Percent	Percent Margin of Error
EMPLOYMENT STATUS				
Population 16 years and over	3,258	±458	3,258	(X)
In labor force	1,845	±304	56.6%	±7.4
Civilian labor force	1,845	±304	56.6%	±7.4
Employed	1,791	±300	55.0%	±7.5
Unemployed	54	±72	1.7%	±2.2
Armed Forces	0	±14	0.0%	±1.3
Not in labor force	1,413	±346	43.4%	±7.4
Civilian labor force	1,845	±304	1,845	(X)
Unemployment Rate	(X)	(X)	2.9%	±3.8
Females 16 years and over	1,579	±278	1,579	(X)
In labor force	838	±185	53.1%	±11.0
Civilian labor force	838	±185	53.1%	±11.0
Employed	838	±185	53.1%	±11.0
Own children of the householder under 6 years	56	±49	56	(X)
All parents in family in labor force	56	±49	100.0%	±45.3
Own children of the householder 6 to 17 years	462	±239	462	(X)
All parents in family in labor force	441	±232	95.5%	±7.3
COMMUTING TO WORK				
Workers 16 years and over	1,762	±296	1,762	(X)
Car, truck, or van -- drove alone	1,456	±281	82.6%	±7.6
Car, truck, or van -- carpoled	94	±81	5.3%	±4.3
Public transportation (excluding taxicab)	0	±14	0.0%	±2.4
Walked	0	±14	0.0%	±2.4
Other means	65	±69	3.7%	±4.0
Worked from home	147	±88	8.3%	±4.9
Mean travel time to work (minutes)	29.5	±6.2	(X)	(X)
OCCUPATION				
Civilian employed population 16 years and over	1,791	±300	1,791	(X)
Management, business, science, and arts occupations	941	±274	52.5%	±10.8
Service occupations	198	±119	11.1%	±6.6
Sales and office occupations	390	±161	21.8%	±9.1

Table: ACSDP5Y2022.DP03

	Bethlehem CDP, North Carolina			
Label	Estimate	Margin of Error	Percent	Percent Margin of Error
Natural resources, construction, and maintenance occupations	95	±78	5.3%	±4.2
Production, transportation, and material moving occupations	167	±106	9.3%	±5.6
INDUSTRY				
Civilian employed population 16 years and over	1,791	±300	1,791	(X)
Agriculture, forestry, fishing and hunting, and mining	0	±14	0.0%	±2.3
Construction	105	±76	5.9%	±4.1
Manufacturing	250	±121	14.0%	±6.4
Wholesale trade	56	±56	3.1%	±3.0
Retail trade	237	±155	13.2%	±8.5
Transportation and warehousing, and utilities	101	±89	5.6%	±4.9
Information	44	±54	2.5%	±2.9
Finance and insurance, and real estate and rental and leasing	39	±39	2.2%	±2.2
Professional, scientific, and management, and administrative and waste management services	153	±102	8.5%	±5.6
Educational services, and health care and social assistance	483	±166	27.0%	±7.4
Arts, entertainment, and recreation, and accommodation and food services	257	±136	14.3%	±7.6
Other services, except public administration	42	±54	2.3%	±2.9
Public administration	24	±36	1.3%	±2.0
CLASS OF WORKER				
Civilian employed population 16 years and over	1,791	±300	1,791	(X)
Private wage and salary workers	1,443	±263	80.6%	±8.0
Government workers	197	±118	11.0%	±5.9

Table: ACSDP5Y2022.DP03

	Bethlehem CDP, North Carolina			
Label	Estimate	Margin of Error	Percent	Percent Margin of Error
Self-employed in own not incorporated business workers	151	±102	8.4%	±5.5
Unpaid family workers	0	±14	0.0%	±2.3
INCOME AND BENEFITS (IN 2022 INFLATION-ADJUSTED DOLLARS)				
Total households	1,617	±204	1,617	(X)
Less than \$10,000	47	±47	2.9%	±2.8
\$10,000 to \$14,999	21	±24	1.3%	±1.5
\$15,000 to \$24,999	61	±71	3.8%	±4.3
\$25,000 to \$34,999	112	±67	6.9%	±4.0
\$35,000 to \$49,999	88	±68	5.4%	±4.1
\$50,000 to \$74,999	449	±144	27.8%	±8.2
\$75,000 to \$99,999	196	±113	12.1%	±6.9
\$100,000 to \$149,999	334	±141	20.7%	±8.3
\$150,000 to \$199,999	117	±84	7.2%	±5.4
\$200,000 or more	192	±113	11.9%	±6.8
Median household income (dollars)	75,838	±12,124	(X)	(X)
Mean household income (dollars)	112,093	±26,664	(X)	(X)
With earnings	1,223	±186	75.6%	±7.3
Mean earnings (dollars)	112,837	±33,323	(X)	(X)
With Social Security	654	±161	40.4%	±8.8
Mean Social Security income (dollars)	25,622	±4,097	(X)	(X)
With retirement income	526	±164	32.5%	±9.0
Mean retirement income (dollars)	25,816	±8,574	(X)	(X)
With Supplemental Security Income	109	±90	6.7%	±5.6
Mean Supplemental Security Income (dollars)	9,416	±2,169	(X)	(X)
With cash public assistance income	78	±86	4.8%	±5.3
Mean cash public assistance income (dollars)	N	N	(X)	(X)
With Food Stamp/SNAP benefits in the past 12 months	92	±88	5.7%	±5.4
Families	1,147	±183	1,147	(X)
Less than \$10,000	19	±33	1.7%	±2.8
\$10,000 to \$14,999	0	±14	0.0%	±3.6

Table: ACSDP5Y2022.DP03

	Bethlehem CDP, North Carolina			
Label	Estimate	Margin of Error	Percent	Percent Margin of Error
\$15,000 to \$24,999	0	±14	0.0%	±3.6
\$25,000 to \$34,999	24	±29	2.1%	±2.5
\$35,000 to \$49,999	57	±59	5.0%	±4.9
\$50,000 to \$74,999	277	±115	24.1%	±9.9
\$75,000 to \$99,999	156	±105	13.6%	±9.0
\$100,000 to \$149,999	308	±140	26.9%	±10.8
\$150,000 to \$199,999	114	±84	9.9%	±7.3
\$200,000 or more	192	±113	16.7%	±9.7
Median family income (dollars)	104,602	±32,835	(X)	(X)
Mean family income (dollars)	137,821	±37,045	(X)	(X)
Per capita income (dollars)	51,662	±13,663	(X)	(X)
Nonfamily households	470	±140	470	(X)
Median nonfamily income (dollars)	51,667	±23,590	(X)	(X)
Mean nonfamily income (dollars)	49,304	±10,034	(X)	(X)
Median earnings for workers (dollars)	53,017	±6,953	(X)	(X)
Median earnings for male full-time, year-round workers (dollars)	81,176	±19,947	(X)	(X)
Median earnings for female full-time, year-round workers (dollars)	51,492	±11,109	(X)	(X)
HEALTH INSURANCE COVERAGE				
Civilian noninstitutionalized population	3,688	±576	3,688	(X)
With health insurance coverage	3,401	±574	92.2%	±4.6
With private health insurance	2,899	±582	78.6%	±9.0
With public coverage	1,237	±293	33.5%	±7.4
No health insurance coverage	287	±171	7.8%	±4.6
Civilian noninstitutionalized population under 19 years	647	±277	647	(X)
No health insurance coverage	0	±14	0.0%	±6.4
Civilian noninstitutionalized population 19 to 64 years	2,148	±398	2,148	(X)
In labor force:	1,647	±298	1,647	(X)
Employed:	1,593	±292	1,593	(X)

Table: ACSDP5Y2022.DP03

	Bethlehem CDP, North Carolina			
Label	Estimate	Margin of Error	Percent	Percent Margin of Error
With health insurance coverage	1,432	±303	89.9%	±7.3
With private health insurance	1,432	±303	89.9%	±7.3
With public coverage	73	±58	4.6%	±3.7
No health insurance coverage	161	±116	10.1%	±7.3
Unemployed:	54	±72	54	(X)
With health insurance coverage	0	±14	0.0%	±46.1
With private health insurance	0	±14	0.0%	±46.1
With public coverage	0	±14	0.0%	±46.1
No health insurance coverage	54	±72	100.0%	±46.1
Not in labor force:	501	±242	501	(X)
With health insurance coverage	429	±233	85.6%	±18.5
With private health insurance	403	±228	80.4%	±19.8
With public coverage	117	±85	23.4%	±17.1
No health insurance coverage	72	±95	14.4%	±18.5
PERCENTAGE OF FAMILIES AND PEOPLE WHOSE INCOME IN THE PAST 12 MONTHS IS BELOW THE POVERTY LEVEL				
All families	(X)	(X)	1.7%	±2.8
With related children of the householder under 18 years	(X)	(X)	0.0%	±13.6
With related children of the householder under 5 years only	(X)	(X)	0.0%	±84.8
Married couple families	(X)	(X)	2.1%	±3.5
With related children of the householder under 18 years	(X)	(X)	0.0%	±22.0
With related children of the householder under 5 years only	(X)	(X)	0.0%	±84.8
Families with female householder, no spouse present	(X)	(X)	0.0%	±23.3

Table: ACSDP5Y2022.DP03

	Bethlehem CDP, North Carolina			
Label	Estimate	Margin of Error	Percent	Percent Margin of Error
With related children of the householder under 18 years	(X)	(X)	0.0%	±46.1
With related children of the householder under 5 years only	(X)	(X)	-	**
All people	(X)	(X)	2.3%	±2.0
Under 18 years	(X)	(X)	0.0%	±7.9
Related children of the householder under 18 years	(X)	(X)	0.0%	±7.9
Related children of the householder under 5 years	(X)	(X)	0.0%	±53.0
Related children of the householder 5 to 17 years	(X)	(X)	0.0%	±8.5
18 years and over	(X)	(X)	2.7%	±2.3
18 to 64 years	(X)	(X)	3.2%	±3.0
65 years and over	(X)	(X)	1.3%	±2.2
People in families	(X)	(X)	1.1%	±1.8
Unrelated individuals 15 years and over	(X)	(X)	9.8%	±7.4

Selected Housing Characteristics		United States[®] Census Bureau
Note: The table shown may have been modified by user selections. Some information may be missing.		
DATA NOTES		
TABLE ID:	DP04	
SURVEY/PROGRAM:	American Community Survey	
VINTAGE:	2022	
DATASET:	ACSDP5Y2022	
PRODUCT:	ACS 5-Year Estimates Data Profiles	
UNIVERSE:	None	
MLA:	U.S. Census Bureau. "Selected Housing Characteristics." American Community Survey, ACS 5-Year Estimates Data Profiles, Table DP04, 2022, https://data.census.gov/table/ACSDP5Y2022.DP04?q=dp04&g=160XX00US3705530 . Accessed on December 7, 2023.	
FTP URL:	None	
API URL:	https://api.census.gov/data/2022/acs/acs5/profile	
USER SELECTIONS		
TABLES	DP04	
GEOS	Bethlehem CDP, North Carolina	
EXCLUDED COLUMNS		
	None	
APPLIED FILTERS		
	None	
APPLIED SORTS		
	None	
PIVOT & GROUPING		
PIVOT COLUMNS	None	
PIVOT MODE	Off	
ROW GROUPS	None	
VALUE COLUMNS	None	
WEB ADDRESS		
	https://data.census.gov/table/ACSDP5Y2022.DP04?q=dp04&g=160XX00US3705530	
TABLE NOTES		
	Although the American Community Survey (ACS) produces population, demographic and housing unit estimates, the decennial census is the official source of population totals for April 1st of each decennial year. In between censuses, the Census Bureau's Population Estimates Program produces and disseminates the official estimates of the population for the nation, states, counties, cities, and towns and estimates of housing units for states and counties.	
	Information about the American Community Survey (ACS) can be found on the ACS website. Supporting documentation including code lists, subject definitions, data accuracy, and statistical testing, and a full list of ACS tables and table shells (without estimates) can be found on the Technical Documentation section of the ACS website. Sample size and data quality measures (including coverage rates, allocation rates, and response rates) can be found on the American Community Survey website in the Methodology section.	
	Source: U.S. Census Bureau, 2018-2022 American Community Survey 5-Year Estimates	
	Data are based on a sample and are subject to sampling variability. The degree of uncertainty for an estimate arising from sampling variability is represented through the use of a margin of error. The value shown here is the 90 percent margin of error. The margin of error can be interpreted roughly as providing a 90 percent probability that the interval defined by the estimate minus the margin of error and the estimate plus the margin of error (the lower and upper confidence bounds) contains the true value. In addition to sampling variability, the ACS estimates are subject to nonsampling error (for a discussion of nonsampling variability, see ACS Technical Documentation). The effect of nonsampling error is not represented in these tables.	

	Households not paying cash rent are excluded from the calculation of median gross rent.
	Telephone service data are not available for certain geographic areas due to problems with data collection of this question that occurred in 2019. Both ACS 1-year and ACS 5-year files were affected. It may take several years in the ACS 5-year files until the estimates are available for the geographic areas affected.
	The 2018-2022 American Community Survey (ACS) data generally reflect the March 2020 Office of Management and Budget (OMB) delineations of metropolitan and micropolitan statistical areas. In certain instances, the names, codes, and boundaries of the principal cities shown in ACS tables may differ from the OMB delineation lists due to differences in the effective dates of the geographic entities.
	Estimates of urban and rural populations, housing units, and characteristics reflect boundaries of urban areas defined based on 2020 Census data. As a result, data for urban and rural areas from the ACS do not necessarily reflect the results of ongoing urbanization.
	Explanation of Symbols:- The estimate could not be computed because there were an insufficient number of sample observations. For a ratio of medians estimate, one or both of the median estimates falls in the lowest interval or highest interval of an open-ended distribution. For a 5-year median estimate, the margin of error associated with a median was larger than the median itself.N The estimate or margin of error cannot be displayed because there were an insufficient number of sample cases in the selected geographic area. (X) The estimate or margin of error is not applicable or not available.median- The median falls in the lowest interval of an open-ended distribution (for example "2,500-")median+ The median falls in the highest interval of an open-ended distribution (for example "250,000+").** The margin of error could not be computed because there were an insufficient number of sample observations.*** The margin of error could not be computed because the median falls in the lowest interval or highest interval of an open-ended distribution.***** A margin of error is not appropriate because the corresponding estimate is controlled to an independent population or housing estimate. Effectively, the corresponding estimate has no sampling error and the margin of error may be treated as zero.
COLUMN NOTES	None

Table: ACSDP5Y2022.DP04

	Bethlehem CDP, North Carolina			
Label	Estimate	Margin of Error	Percent	Percent Margin of Error
HOUSING OCCUPANCY				
Total housing units	1,763	±221	1,763	(X)
Occupied housing units	1,617	±204	91.7%	±5.8
Vacant housing units	146	±108	8.3%	±5.8
Homeowner vacancy rate	3.2	±4.2	(X)	(X)
Rental vacancy rate	0.0	±15.8	(X)	(X)
UNITS IN STRUCTURE				
Total housing units	1,763	±221	1,763	(X)
1-unit, detached	1,518	±238	86.1%	±8.0
1-unit, attached	0	±14	0.0%	±2.4
2 units	116	±100	6.6%	±5.6
3 or 4 units	0	±14	0.0%	±2.4
5 to 9 units	0	±14	0.0%	±2.4
10 to 19 units	0	±14	0.0%	±2.4
20 or more units	0	±14	0.0%	±2.4
Mobile home	129	±109	7.3%	±6.0
Boat, RV, van, etc.	0	±14	0.0%	±2.4
YEAR STRUCTURE BUILT				
Total housing units	1,763	±221	1,763	(X)
Built 2020 or later	28	±44	1.6%	±2.5
Built 2010 to 2019	88	±89	5.0%	±4.9
Built 2000 to 2009	260	±114	14.7%	±6.4
Built 1990 to 1999	554	±151	31.4%	±7.7
Built 1980 to 1989	229	±133	13.0%	±7.2
Built 1970 to 1979	270	±106	15.3%	±5.5
Built 1960 to 1969	149	±95	8.5%	±5.5
Built 1950 to 1959	44	±36	2.5%	±2.0
Built 1940 to 1949	45	±60	2.6%	±3.3
Built 1939 or earlier	96	±76	5.4%	±4.3
ROOMS				
Total housing units	1,763	±221	1,763	(X)
1 room	19	±31	1.1%	±1.8
2 rooms	0	±14	0.0%	±2.4
3 rooms	0	±14	0.0%	±2.4
4 rooms	236	±107	13.4%	±5.5
5 rooms	483	±172	27.4%	±8.6
6 rooms	272	±84	15.4%	±4.9
7 rooms	289	±130	16.4%	±7.3
8 rooms	108	±58	6.1%	±3.5
9 rooms or more	356	±143	20.2%	±7.4
Median rooms	6.0	±0.6	(X)	(X)
BEDROOMS				
Total housing units	1,763	±221	1,763	(X)

Table: ACSDP5Y2022.DP04

	Bethlehem CDP, North Carolina			
Label	Estimate	Margin of Error	Percent	Percent Margin of Error
No bedroom	19	±31	1.1%	±1.8
1 bedroom	11	±17	0.6%	±1.0
2 bedrooms	292	±143	16.6%	±7.3
3 bedrooms	1,065	±191	60.4%	±9.6
4 bedrooms	292	±144	16.6%	±7.6
5 or more bedrooms	84	±58	4.8%	±3.3
HOUSING TENURE				
Occupied housing units	1,617	±204	1,617	(X)
Owner-occupied	1,371	±213	84.8%	±8.7
Renter-occupied	246	±148	15.2%	±8.7
Average household size of owner-occupied unit	2.32	±0.29	(X)	(X)
Average household size of renter-occupied unit	2.04	±0.66	(X)	(X)
YEAR HOUSEHOLDER MOVED INTO UNIT				
Occupied housing units	1,617	±204	1,617	(X)
Moved in 2021 or later	28	±44	1.7%	±2.7
Moved in 2018 to 2020	220	±117	13.6%	±7.0
Moved in 2010 to 2017	501	±177	31.0%	±9.5
Moved in 2000 to 2009	386	±130	23.9%	±8.0
Moved in 1990 to 1999	345	±130	21.3%	±7.8
Moved in 1989 and earlier	137	±68	8.5%	±4.1
VEHICLES AVAILABLE				
Occupied housing units	1,617	±204	1,617	(X)
No vehicles available	14	±23	0.9%	±1.4
1 vehicle available	458	±181	28.3%	±10.2
2 vehicles available	641	±157	39.6%	±9.4
3 or more vehicles available	504	±170	31.2%	±9.3
HOUSE HEATING FUEL				
Occupied housing units	1,617	±204	1,617	(X)
Utility gas	328	±141	20.3%	±8.6
Bottled, tank, or LP gas	72	±65	4.5%	±4.0
Electricity	1,175	±229	72.7%	±9.4
Fuel oil, kerosene, etc.	19	±28	1.2%	±1.7
Coal or coke	0	±14	0.0%	±2.6
Wood	11	±17	0.7%	±1.1
Solar energy	0	±14	0.0%	±2.6
Other fuel	0	±14	0.0%	±2.6
No fuel used	12	±20	0.7%	±1.2
SELECTED CHARACTERISTICS				
Occupied housing units	1,617	±204	1,617	(X)

Table: ACSDP5Y2022.DP04

	Bethlehem CDP, North Carolina			
Label	Estimate	Margin of Error	Percent	Percent Margin of Error
Lacking complete plumbing facilities	0	±14	0.0%	±2.6
Lacking complete kitchen facilities	0	±14	0.0%	±2.6
No telephone service available	0	±14	0.0%	±2.6
OCCUPANTS PER ROOM				
Occupied housing units	1,617	±204	1,617	(X)
1.00 or less	1,598	±202	98.8%	±1.9
1.01 to 1.50	0	±14	0.0%	±2.6
1.51 or more	19	±31	1.2%	±1.9
VALUE				
Owner-occupied units	1,371	±213	1,371	(X)
Less than \$50,000	20	±23	1.5%	±1.6
\$50,000 to \$99,999	35	±32	2.6%	±2.4
\$100,000 to \$149,999	149	±87	10.9%	±6.3
\$150,000 to \$199,999	187	±95	13.6%	±6.8
\$200,000 to \$299,999	390	±160	28.4%	±10.4
\$300,000 to \$499,999	390	±143	28.4%	±9.8
\$500,000 to \$999,999	200	±122	14.6%	±8.2
\$1,000,000 or more	0	±14	0.0%	±3.0
Median (dollars)	273,300	±40,625	(X)	(X)
MORTGAGE STATUS				
Owner-occupied units	1,371	±213	1,371	(X)
Housing units with a mortgage	796	±178	58.1%	±8.7
Housing units without a mortgage	575	±146	41.9%	±8.7
SELECTED MONTHLY OWNER COSTS (SMOC)				
Housing units with a mortgage	796	±178	796	(X)
Less than \$500	19	±28	2.4%	±3.4
\$500 to \$999	144	±84	18.1%	±10.3
\$1,000 to \$1,499	306	±131	38.4%	±14.4
\$1,500 to \$1,999	197	±114	24.7%	±12.8
\$2,000 to \$2,499	59	±55	7.4%	±6.6
\$2,500 to \$2,999	3	±6	0.4%	±0.7
\$3,000 or more	68	±96	8.5%	±11.8
Median (dollars)	1,421	±115	(X)	(X)
Housing units without a mortgage	575	±146	575	(X)
Less than \$250	26	±30	4.5%	±5.2
\$250 to \$399	78	±58	13.6%	±9.7

Table: ACSDP5Y2022.DP04

	Bethlehem CDP, North Carolina			
Label	Estimate	Margin of Error	Percent	Percent Margin of Error
\$400 to \$599	296	±114	51.5%	±13.5
\$600 to \$799	111	±70	19.3%	±10.5
\$800 to \$999	64	±50	11.1%	±8.4
\$1,000 or more	0	±14	0.0%	±7.1
Median (dollars)	552	±25	(X)	(X)
SELECTED MONTHLY OWNER COSTS AS A PERCENTAGE OF HOUSEHOLD INCOME (SMOCAPI)				
Housing units with a mortgage (excluding units where SMOCAPI cannot be computed)	796	±178	796	(X)
Less than 20.0 percent	416	±162	52.3%	±13.7
20.0 to 24.9 percent	83	±64	10.4%	±8.0
25.0 to 29.9 percent	117	±69	14.7%	±8.8
30.0 to 34.9 percent	23	±37	2.9%	±4.7
35.0 percent or more	157	±93	19.7%	±10.6
Not computed	0	±14	(X)	(X)
Housing unit without a mortgage (excluding units where SMOCAPI cannot be computed)	556	±142	556	(X)
Less than 10.0 percent	319	±118	57.4%	±17.4
10.0 to 14.9 percent	115	±55	20.7%	±9.4
15.0 to 19.9 percent	10	±16	1.8%	±2.9
20.0 to 24.9 percent	9	±14	1.6%	±2.6
25.0 to 29.9 percent	77	±99	13.8%	±16.7
30.0 to 34.9 percent	0	±14	0.0%	±7.4
35.0 percent or more	26	±24	4.7%	±4.4
Not computed	19	±33	(X)	(X)
GROSS RENT				
Occupied units paying rent	204	±136	204	(X)
Less than \$500	0	±14	0.0%	±18.7
\$500 to \$999	204	±136	100.0%	±18.7
\$1,000 to \$1,499	0	±14	0.0%	±18.7
\$1,500 to \$1,999	0	±14	0.0%	±18.7
\$2,000 to \$2,499	0	±14	0.0%	±18.7
\$2,500 to \$2,999	0	±14	0.0%	±18.7
\$3,000 or more	0	±14	0.0%	±18.7
Median (dollars)	726	±57	(X)	(X)
No rent paid	42	±52	(X)	(X)

Table: ACSDP5Y2022.DP04

	Bethlehem CDP, North Carolina			
Label	Estimate	Margin of Error	Percent	Percent Margin of Error
GROSS RENT AS A PERCENTAGE OF HOUSEHOLD INCOME (GRAPI)				
Occupied units paying rent (excluding units where GRAPI cannot be computed)	204	±136	204	(X)
Less than 15.0 percent	128	±106	62.7%	±31.7
15.0 to 19.9 percent	54	±70	26.5%	±29.5
20.0 to 24.9 percent	0	±14	0.0%	±18.7
25.0 to 29.9 percent	0	±14	0.0%	±18.7
30.0 to 34.9 percent	0	±14	0.0%	±18.7
35.0 percent or more	22	±28	10.8%	±16.4
Not computed	42	±52	(X)	(X)

ACS Demographic and Housing Estimates



Note: The table shown may have been modified by user selections. Some information may be missing.

DATA NOTES

TABLE ID:	DP05
SURVEY/PROGRAM:	American Community Survey
VINTAGE:	2022
DATASET:	ACSDP5Y2022
PRODUCT:	ACS 5-Year Estimates Data Profiles
UNIVERSE:	None
MLA:	U.S. Census Bureau. "ACS Demographic and Housing Estimates." American Community Survey, ACS 5-Year Estimates Data Profiles, Table DP05, 2022, https://data.census.gov/table/ACSDP5Y2022.DP05?q=dp05&g=160XX00US3705530 . Accessed on December 7, 2023.
FTP URL:	None
API URL:	https://api.census.gov/data/2022/acs/acs5/profile

USER SELECTIONS

TABLES	DP05
GEOS	Bethlehem CDP, North Carolina

EXCLUDED COLUMNS None

APPLIED FILTERS None

APPLIED SORTS None

PIVOT & GROUPING

PIVOT COLUMNS	None
PIVOT MODE	Off
ROW GROUPS	None
VALUE COLUMNS	None

WEB ADDRESS <https://data.census.gov/table/ACSDP5Y2022.DP05?q=dp05&g=160XX00US3705530>

TABLE NOTES

Although the American Community Survey (ACS) produces population, demographic and housing unit estimates, the decennial census is the official source of population totals for April 1st of each decennial year. In between censuses, the Census Bureau's Population Estimates Program produces and disseminates the official estimates of the population for the nation, states, counties, cities, and towns and estimates of housing units for states and counties.

Information about the American Community Survey (ACS) can be found on the ACS website. Supporting documentation including code lists, subject definitions, data accuracy, and statistical testing, and a full list of ACS tables and table shells (without estimates) can be found on the Technical Documentation section of the ACS website.

Sample size and data quality measures (including coverage rates, allocation rates, and response rates) can be found on the American Community Survey website in the Methodology section.

Source: U.S. Census Bureau, 2018-2022 American Community Survey 5-Year Estimates

Data are based on a sample and are subject to sampling variability. The degree of uncertainty for an estimate arising from sampling variability is represented through the use of a margin of error. The value shown here is the 90 percent margin of error. The margin of error can be interpreted roughly as providing a 90 percent probability that the interval defined by the estimate minus the margin of error and the estimate plus the margin of error (the lower and upper confidence bounds) contains the true value. In addition to sampling variability, the ACS estimates are subject to nonsampling error (for a discussion of nonsampling variability, see ACS Technical Documentation). The effect of nonsampling error is not represented in these tables.

	For more information on understanding Hispanic origin and race data, please see the America Counts: Stories Behind the Numbers article entitled, 2020 Census Illuminates Racial and Ethnic Composition of the Country, issued August 2021.
	The Hispanic origin and race codes were updated in 2020. For more information on the Hispanic origin and race code changes, please visit the American Community Survey Technical Documentation website.
	The 2018-2022 American Community Survey (ACS) data generally reflect the March 2020 Office of Management and Budget (OMB) delineations of metropolitan and micropolitan statistical areas. In certain instances, the names, codes, and boundaries of the principal cities shown in ACS tables may differ from the OMB delineation lists due to differences in the effective dates of the geographic entities.
	Estimates of urban and rural populations, housing units, and characteristics reflect boundaries of urban areas defined based on 2020 Census data. As a result, data for urban and rural areas from the ACS do not necessarily reflect the results of ongoing urbanization.
	Explanation of Symbols:- The estimate could not be computed because there were an insufficient number of sample observations. For a ratio of medians estimate, one or both of the median estimates falls in the lowest interval or highest interval of an open-ended distribution. For a 5-year median estimate, the margin of error associated with a median was larger than the median itself.N The estimate or margin of error cannot be displayed because there were an insufficient number of sample cases in the selected geographic area. (X) The estimate or margin of error is not applicable or not available.median- The median falls in the lowest interval of an open-ended distribution (for example "2,500-")median+ The median falls in the highest interval of an open-ended distribution (for example "250,000+").** The margin of error could not be computed because there were an insufficient number of sample observations.*** The margin of error could not be computed because the median falls in the lowest interval or highest interval of an open-ended distribution.***** A margin of error is not appropriate because the corresponding estimate is controlled to an independent population or housing estimate. Effectively, the corresponding estimate has no sampling error and the margin of error may be treated as zero.
COLUMN NOTES	None

Table: ACSDP5Y2022.DP05

	Bethlehem CDP, North Carolina			
Label	Estimate	Margin of Error	Percent	Percent Margin of Error
SEX AND AGE				
Total population	3,688	±576	3,688	(X)
Male	1,899	±320	51.5%	±4.6
Female	1,789	±346	48.5%	±4.6
Sex ratio (males per 100 females)	106.1	±19.6	(X)	(X)
Under 5 years	41	±42	1.1%	±1.1
5 to 9 years	168	±138	4.6%	±3.5
10 to 14 years	192	±129	5.2%	±3.2
15 to 19 years	246	±147	6.7%	±3.7
20 to 24 years	80	±90	2.2%	±2.3
25 to 34 years	351	±174	9.5%	±4.4
35 to 44 years	487	±172	13.2%	±3.8
45 to 54 years	443	±179	12.0%	±4.9
55 to 59 years	339	±134	9.2%	±3.6
60 to 64 years	448	±208	12.1%	±5.5
65 to 74 years	563	±173	15.3%	±4.7
75 to 84 years	220	±88	6.0%	±2.5
85 years and over	110	±102	3.0%	±2.8
Median age (years)	52.3	±8.8	(X)	(X)
Under 18 years	518	±244	14.0%	±5.5
16 years and over	3,258	±458	88.3%	±5.4
18 years and over	3,170	±458	86.0%	±5.5
21 years and over	3,041	±428	82.5%	±5.9
62 years and over	1,188	±291	32.2%	±7.5
65 years and over	893	±225	24.2%	±6.4
18 years and over	3,170	±458	3,170	(X)
Male	1,614	±255	50.9%	±4.3
Female	1,556	±275	49.1%	±4.3
Sex ratio (males per 100 females)	103.7	±17.8	(X)	(X)
65 years and over	893	±225	893	(X)
Male	469	±135	52.5%	±8.5
Female	424	±134	47.5%	±8.5
Sex ratio (males per 100 females)	110.6	±36.5	(X)	(X)
RACE				
Total population	3,688	±576	3,688	(X)
One race	3,655	±574	99.1%	±1.1
Two or More Races	33	±40	0.9%	±1.1
One race	3,655	±574	99.1%	±1.1
White	3,440	±566	93.3%	±4.1
Black or African American	0	±14	0.0%	±1.1

Table: ACSDP5Y2022.DP05

	Bethlehem CDP, North Carolina			
Label	Estimate	Margin of Error	Percent	Percent Margin of Error
American Indian and Alaska Native	0	±14	0.0%	±1.1
Cherokee tribal grouping	0	±14	0.0%	±1.1
Chippewa tribal grouping	0	±14	0.0%	±1.1
Navajo tribal grouping	0	±14	0.0%	±1.1
Sioux tribal grouping	0	±14	0.0%	±1.1
Asian	215	±155	5.8%	±4.2
Asian Indian	54	±56	1.5%	±1.6
Chinese	161	±169	4.4%	±4.6
Filipino	0	±14	0.0%	±1.1
Japanese	0	±14	0.0%	±1.1
Korean	0	±14	0.0%	±1.1
Vietnamese	0	±14	0.0%	±1.1
Other Asian	0	±14	0.0%	±1.1
Native Hawaiian and Other Pacific Islander	0	±14	0.0%	±1.1
Chamorro	0	±14	0.0%	±1.1
Native Hawaiian	0	±14	0.0%	±1.1
Samoan	0	±14	0.0%	±1.1
Other Native Hawaiian and Other Pacific Islander	0	±14	0.0%	±1.1
Some Other Race	0	±14	0.0%	±1.1
Two or More Races	33	±40	0.9%	±1.1
White and Black or African American	0	±14	0.0%	±1.1
White and American Indian and Alaska Native	18	±31	0.5%	±0.8
White and Asian	15	±26	0.4%	±0.7
White and Some Other Race	0	±14	0.0%	±1.1
Black or African American and American Indian and Alaska Native	0	±14	0.0%	±1.1
Black or African American and Some Other Race	0	±14	0.0%	±1.1
Race alone or in combination with one or more other races				
Total population	3,688	±576	3,688	(X)
White	3,473	±570	94.2%	±4.2
Black or African American	0	±14	0.0%	±1.1
American Indian and Alaska Native	18	±31	0.5%	±0.8
Asian	230	±146	6.2%	±3.9

Table: ACSDP5Y2022.DP05

	Bethlehem CDP, North Carolina			
Label	Estimate	Margin of Error	Percent	Percent Margin of Error
Native Hawaiian and Other Pacific Islander	0	±14	0.0%	±1.1
Some Other Race	0	±14	0.0%	±1.1
HISPANIC OR LATINO AND RACE				
Total population	3,688	±576	3,688	(X)
Hispanic or Latino (of any race)	154	±222	4.2%	±5.8
Mexican	29	±47	0.8%	±1.3
Puerto Rican	0	±14	0.0%	±1.1
Cuban	0	±14	0.0%	±1.1
Other Hispanic or Latino	125	±212	3.4%	±5.6
Not Hispanic or Latino	3,534	±550	95.8%	±5.8
White alone	3,286	±545	89.1%	±7.1
Black or African American alone	0	±14	0.0%	±1.1
American Indian and Alaska Native alone	0	±14	0.0%	±1.1
Asian alone	215	±155	5.8%	±4.2
Native Hawaiian and Other Pacific Islander alone	0	±14	0.0%	±1.1
Some Other Race alone	0	±14	0.0%	±1.1
Two or More Races	33	±40	0.9%	±1.1
Two races including Some Other Race	0	±14	0.0%	±1.1
Two races excluding Some Other Race, and three or more races	33	±40	0.9%	±1.1
Total housing units	1,763	±221	(X)	(X)
CITIZEN, VOTING AGE POPULATION				
Citizen, 18 and over population	3,170	±458	3,170	(X)
Male	1,614	±255	50.9%	±4.3
Female	1,556	±275	49.1%	±4.3