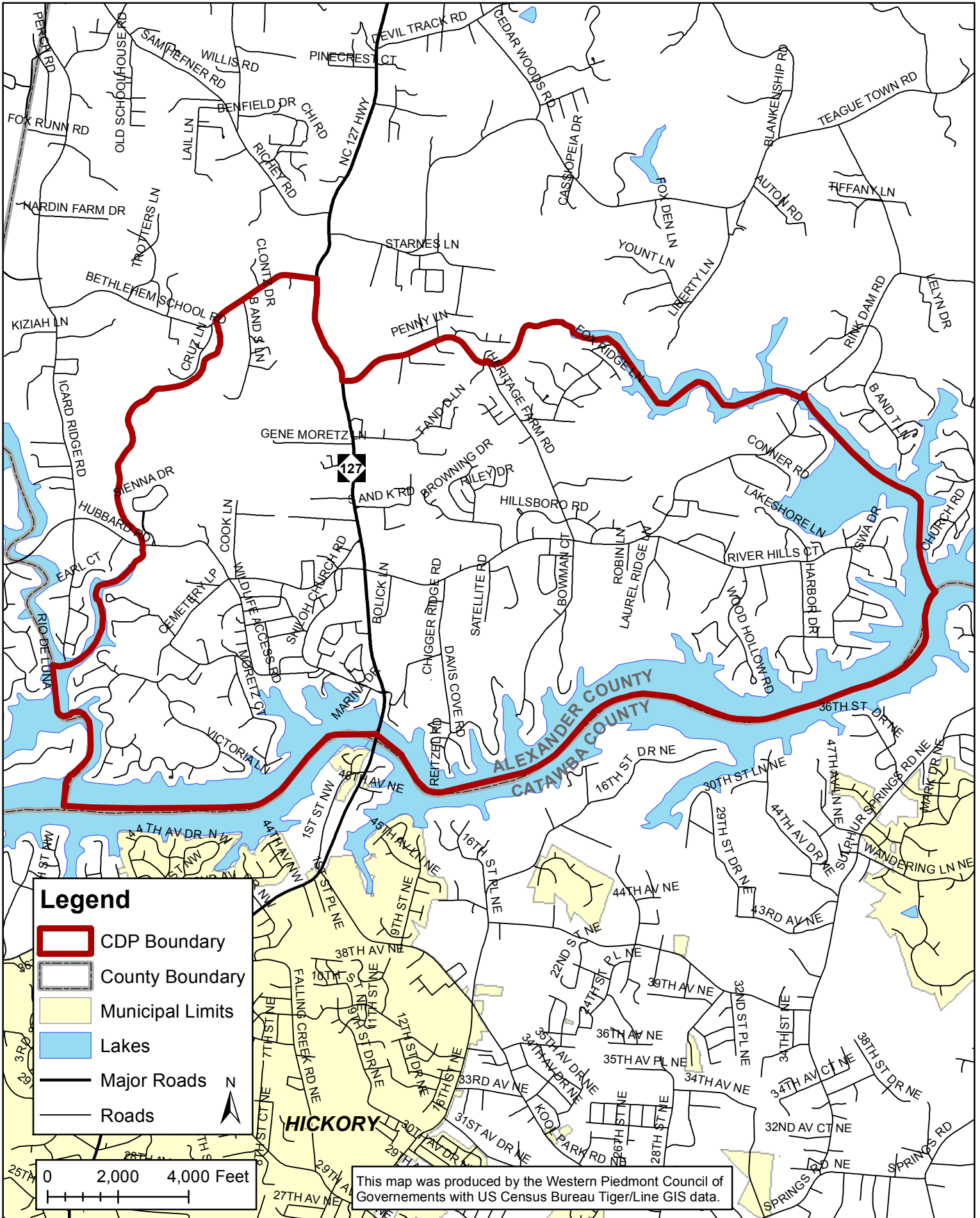


Bethlehem Census Designated Place (CDP)



Selected Social Characteristics in the United States



Note: The table shown may have been modified by user selections. Some information may be missing.

DATA NOTES

TABLE ID:	DP02
SURVEY/PROGRAM:	American Community Survey
VINTAGE:	2023
DATASET:	ACSDP5Y2023
PRODUCT:	ACS 5-Year Estimates Data Profiles
UNIVERSE:	None
MLA:	U.S. Census Bureau, U.S. Department of Commerce. "Selected Social Characteristics in the United States." American Community Survey, ACS 5-Year Estimates Data Profiles, Table DP02, 2023, https://data.census.gov/table/ACSDP5Y2023.DP02?q=dp02&g=160XX00US3705530 . Accessed on December 12, 2024.
FTP URL:	None
API URL:	https://api.census.gov/data/2023/acs/acs5/profile

USER SELECTIONS

TABLES	DP02
GEOS	Bethlehem CDP, North Carolina

EXCLUDED COLUMNS None

APPLIED FILTERS None

APPLIED SORTS None

PIVOT & GROUPING

PIVOT COLUMNS	None
PIVOT MODE	Off
ROW GROUPS	None
VALUE COLUMNS	None

WEB ADDRESS <https://data.census.gov/table/ACSDP5Y2023.DP02?q=dp02&g=160XX00US3705530>

TABLE NOTES

	Although the American Community Survey (ACS) produces population, demographic and housing unit estimates, the decennial census is the official source of population totals for April 1st of each decennial year. In between censuses, the Census Bureau's Population Estimates Program produces and disseminates the official estimates of the population for the nation, states, counties, cities, and towns and estimates of housing units and the group quarters population for states and counties.
	Information about the American Community Survey (ACS) can be found on the ACS website. Supporting documentation including code lists, subject definitions, data accuracy, and statistical testing, and a full list of ACS tables and table shells (without estimates) can be found on the Technical Documentation section of the ACS website. Sample size and data quality measures (including coverage rates, allocation rates, and response rates) can be found on the American Community Survey website in the Methodology section.
	Source: U.S. Census Bureau, 2019-2023 American Community Survey 5-Year Estimates
	ACS data generally reflect the geographic boundaries of legal and statistical areas as of January 1 of the estimate year. For more information, see Geography Boundaries by Year .

	<p>Data are based on a sample and are subject to sampling variability. The degree of uncertainty for an estimate arising from sampling variability is represented through the use of a margin of error. The value shown here is the 90 percent margin of error. The margin of error can be interpreted roughly as providing a 90 percent probability that the interval defined by the estimate minus the margin of error and the estimate plus the margin of error (the lower and upper confidence bounds) contains the true value. In addition to sampling variability, the ACS estimates are subject to nonsampling error (for a discussion of nonsampling variability, see ACS Technical Documentation). The effect of nonsampling error is not represented in these tables.</p>
	<p>Users must consider potential differences in geographic boundaries, questionnaire content or coding, or other methodological issues when comparing ACS data from different years. Statistically significant differences shown in ACS Comparison Profiles, or in data users' own analysis, may be the result of these differences and thus might not necessarily reflect changes to the social, economic, housing, or demographic characteristics being compared. For more information, see Comparing ACS Data.</p>
	<p>Ancestry listed in this table refers to the total number of people who responded with a particular ancestry; for example, the estimate given for German represents the number of people who listed German as either their first or second ancestry. This table lists only the largest ancestry groups; see the Detailed Tables for more categories. Race and Hispanic origin groups are not included in this table because data for those groups come from the Race and Hispanic origin questions rather than the ancestry question (see Demographic Table).</p>
	<p>Data for year of entry of the native population reflect the year of entry into the U.S. by people who were born in Puerto Rico or U.S. Island Areas or born outside the U.S. to a U.S. citizen parent and who subsequently moved to the U.S.</p>
	<p>The category "with a broadband Internet subscription" refers to those who said "Yes" to at least one of the following types of Internet subscriptions: Broadband such as cable, fiber optic, or DSL; a cellular data plan; satellite; a fixed wireless subscription; or other non-dial up subscription types.</p>
	<p>An Internet "subscription" refers to a type of service that someone pays for to access the Internet such as a cellular data plan, broadband such as cable, fiber optic or DSL, or other type of service. This will normally refer to a service that someone is billed for directly for Internet alone or sometimes as part of a bundle.</p>
	<p>"With a computer" includes those who said "Yes" to at least one of the following types of computers: Desktop or laptop; smartphone; tablet or other portable wireless computer; or some other type of computer.</p>
	<p>Caution should be used when comparing data for computer and Internet use before and after 2016. Changes in 2016 to the questions involving the wording as well as the response options resulted in changed response patterns in the data. Most noticeable are increases in overall computer ownership or use, the total of Internet subscriptions, satellite subscriptions, and cellular data plans for a smartphone or other mobile device. For more detailed information about these changes, see the 2016 American Community Survey Content Test Report for Computer and Internet Use located at https://www.census.gov/library/working-papers/2017/acs/2017_Lewis_01.html or the user note regarding changes in the 2016 questions located at https://www.census.gov/programs-surveys/acs/technical-documentation/user-notes/2017-03.html.</p>
	<p>Estimates of urban and rural populations, housing units, and characteristics reflect boundaries of urban areas defined based on 2020 Census data. As a result, data for urban and rural areas from the ACS do not necessarily reflect the results of ongoing urbanization.</p>
	<p>Explanation of Symbols:- The estimate could not be computed because there were an insufficient number of sample observations. For a ratio of medians estimate, one or both of the median estimates falls in the lowest interval or highest interval of an open-ended distribution. For a 5-year median estimate, the margin of error associated with a median was larger than the median itself.N The estimate or margin of error cannot be displayed because there were an insufficient number of sample cases in the selected geographic area. (X) The estimate or margin of error is not applicable or not available. median- The median falls in the lowest interval of an open-ended distribution (for example "2,500-") median+ The median falls in the highest interval of an open-ended distribution (for example "250,000+").** The margin of error could not be computed because there were an insufficient number of sample observations.*** The margin of error could not be computed because the median falls in the lowest interval or highest interval of an open-ended distribution.***** A margin of error is not appropriate because the corresponding estimate is controlled to an independent population or housing estimate. Effectively, the corresponding estimate has no sampling error and the margin of error may be treated as zero.</p>
COLUMN NOTES	None

Table: ACSDP5Y2023.DP02

	Bethlehem CDP, North Carolina			
Label	Estimate	Margin of Error	Percent	Percent Margin of Error
HOUSEHOLDS BY TYPE				
Total households	1,685	±249	1,685	(X)
Married-couple household	929	±211	55.1%	±10.6
With children of the householder under 18 years	164	±83	9.7%	±5.0
Cohabiting couple household	15	±18	0.9%	±1.1
With children of the householder under 18 years	0	±14	0.0%	±2.5
Male householder, no spouse/partner present	362	±177	21.5%	±9.2
With children of the householder under 18 years	88	±116	5.2%	±6.7
Householder living alone	246	±140	14.6%	±7.6
65 years and over	93	±67	5.5%	±3.9
Female householder, no spouse/partner present	379	±145	22.5%	±8.4
With children of the householder under 18 years	70	±87	4.2%	±5.1
Householder living alone	189	±104	11.2%	±6.3
65 years and over	103	±75	6.1%	±4.4
Households with one or more people under 18 years	332	±137	19.7%	±7.5
Households with one or more people 65 years and over	667	±142	39.6%	±6.8
Average household size	2.33	±0.25	(X)	(X)
Average family size	2.81	±0.29	(X)	(X)
RELATIONSHIP				
Population in households	3,928	±594	3,928	(X)
Householder	1,685	±249	42.9%	±4.5
Spouse	1,030	±228	26.2%	±4.1
Unmarried partner	27	±27	0.7%	±0.7
Child	950	±272	24.2%	±5.2
Other relatives	186	±144	4.7%	±3.4
Other nonrelatives	50	±60	1.3%	±1.5
MARITAL STATUS				
Males 15 years and over	1,774	±328	1,774	(X)
Never married	409	±201	23.1%	±9.2
Now married, except separated	1,065	±220	60.0%	±13.0
Separated	39	±66	2.2%	±3.7
Widowed	97	±81	5.5%	±4.4
Divorced	164	±122	9.2%	±6.2

Table: ACSDP5Y2023.DP02

	Bethlehem CDP, North Carolina			
Label	Estimate	Margin of Error	Percent	Percent Margin of Error
Females 15 years and over	1,715	±311	1,715	(X)
Never married	318	±156	18.5%	±7.8
Now married, except separated	939	±230	54.8%	±9.6
Separated	0	±14	0.0%	±2.4
Widowed	283	±132	16.5%	±6.9
Divorced	175	±106	10.2%	±6.1
FERTILITY				
Number of women 15 to 50 years old who had a birth in the past 12 months	0	±14	0	(X)
Unmarried women (widowed, divorced, and never married)	0	±14	-	**
Per 1,000 unmarried women	0	±98	(X)	(X)
Per 1,000 women 15 to 50 years old	0	±56	(X)	(X)
Per 1,000 women 15 to 19 years old	0	±265	(X)	(X)
Per 1,000 women 20 to 34 years old	0	±232	(X)	(X)
Per 1,000 women 35 to 50 years old	0	±92	(X)	(X)
GRANDPARENTS				
Number of grandparents living with own grandchildren under 18 years	20	±33	20	(X)
Grandparents responsible for grandchildren	0	±14	0.0%	±75.8
Years responsible for grandchildren				
Less than 1 year	0	±14	0.0%	±75.8
1 or 2 years	0	±14	0.0%	±75.8
3 or 4 years	0	±14	0.0%	±75.8
5 or more years	0	±14	0.0%	±75.8
Number of grandparents responsible for own grandchildren under 18 years	0	±14	0	(X)
Who are female	0	±14	-	**
Who are married	0	±14	-	**
SCHOOL ENROLLMENT				

Table: ACSDP5Y2023.DP02

	Bethlehem CDP, North Carolina			
Label	Estimate	Margin of Error	Percent	Percent Margin of Error
Population 3 years and over enrolled in school	740	±251	740	(X)
Nursery school, preschool	20	±35	2.7%	±5.0
Kindergarten	19	±18	2.6%	±2.3
Elementary school (grades 1-8)	380	±197	51.4%	±16.9
High school (grades 9-12)	230	±147	31.1%	±18.1
College or graduate school	91	±90	12.3%	±11.1
EDUCATIONAL ATTAINMENT				
Population 25 years and over	3,146	±486	3,146	(X)
Less than 9th grade	92	±93	2.9%	±2.8
9th to 12th grade, no diploma	124	±95	3.9%	±2.9
High school graduate (includes equivalency)	673	±207	21.4%	±5.0
Some college, no degree	539	±176	17.1%	±4.7
Associate's degree	430	±165	13.7%	±4.6
Bachelor's degree	843	±270	26.8%	±8.2
Graduate or professional degree	445	±185	14.1%	±6.0
High school graduate or higher	2,930	±441	93.1%	±3.6
Bachelor's degree or higher	1,288	±252	40.9%	±7.6
VETERAN STATUS				
Civilian population 18 years and over	3,354	±517	3,354	(X)
Civilian veterans	280	±132	8.3%	±4.1
DISABILITY STATUS OF THE CIVILIAN NONINSTITUTIONALIZED POPULATION				
Total Civilian Noninstitutionalized Population	3,928	±594	3,928	(X)
With a disability	651	±262	16.6%	±6.3
Under 18 years	574	±216	574	(X)
With a disability	21	±34	3.7%	±5.9
18 to 64 years	2,287	±423	2,287	(X)
With a disability	251	±149	11.0%	±6.3
65 years and over	1,067	±253	1,067	(X)
With a disability	379	±172	35.5%	±13.0
RESIDENCE 1 YEAR AGO				
Population 1 year and over	3,928	±594	3,928	(X)
Same house	3,625	±588	92.3%	±4.3

Table: ACSDP5Y2023.DP02

	Bethlehem CDP, North Carolina			
Label	Estimate	Margin of Error	Percent	Percent Margin of Error
Different house (in the U.S. or abroad)	303	±171	7.7%	±4.3
Different house in the U.S.	303	±171	7.7%	±4.3
Same county	131	±131	3.3%	±3.3
Different county	172	±131	4.4%	±3.4
Same state	66	±97	1.7%	±2.5
Different state	106	±92	2.7%	±2.4
Abroad	0	±14	0.0%	±1.1
PLACE OF BIRTH				
Total population	3,928	±594	3,928	(X)
Native	3,671	±592	93.5%	±3.0
Born in United States	3,655	±592	93.0%	±3.1
State of residence	2,272	±476	57.8%	±7.6
Different state	1,383	±380	35.2%	±8.1
Born in Puerto Rico, U.S. Island areas, or born abroad to American parent(s)	16	±30	0.4%	±0.8
Foreign-born	257	±117	6.5%	±3.0
U.S. CITIZENSHIP STATUS				
Foreign-born population	257	±117	257	(X)
Naturalized U.S. citizen	257	±117	100.0%	±15.2
Not a U.S. citizen	0	±14	0.0%	±15.2
YEAR OF ENTRY				
Population born outside the United States	273	±118	273	(X)
Native	16	±30	16	(X)
Entered 2010 or later	0	±14	0.0%	±84.8
Entered before 2010	16	±30	100.0%	±84.8
Foreign-born	257	±117	257	(X)
Entered 2010 or later	0	±14	0.0%	±15.2
Entered before 2010	257	±117	100.0%	±15.2
WORLD REGION OF BIRTH OF FOREIGN-BORN				
Foreign-born population, excluding population born at sea	257	±117	257	(X)
Europe	0	±14	0.0%	±15.2
Asia	224	±100	87.2%	±19.3
Africa	0	±14	0.0%	±15.2
Oceania	0	±14	0.0%	±15.2
Latin America	33	±56	12.8%	±19.3
Northern America	0	±14	0.0%	±15.2
LANGUAGE SPOKEN AT HOME				

Table: ACSDP5Y2023.DP02

	Bethlehem CDP, North Carolina			
Label	Estimate	Margin of Error	Percent	Percent Margin of Error
Population 5 years and over	3,888	±585	3,888	(X)
English only	3,620	±582	93.1%	±3.9
Language other than English	268	±152	6.9%	±3.9
Speak English less than "very well"	0	±14	0.0%	±1.1
Spanish	145	±132	3.7%	±3.3
Speak English less than "very well"	0	±14	0.0%	±1.1
Other Indo-European languages	0	±14	0.0%	±1.1
Speak English less than "very well"	0	±14	0.0%	±1.1
Asian and Pacific Islander languages	123	±101	3.2%	±2.7
Speak English less than "very well"	0	±14	0.0%	±1.1
Other languages	0	±14	0.0%	±1.1
Speak English less than "very well"	0	±14	0.0%	±1.1
ANCESTRY				
Total population	3,928	±594	3,928	(X)
American	538	±268	13.7%	±6.6
Arab	0	±14	0.0%	±1.1
Czech	0	±14	0.0%	±1.1
Danish	0	±14	0.0%	±1.1
Dutch	10	±17	0.3%	±0.4
English	366	±158	9.3%	±4.2
French (except Basque)	35	±41	0.9%	±1.0
French Canadian	14	±21	0.4%	±0.5
German	954	±420	24.3%	±9.5
Greek	0	±14	0.0%	±1.1
Hungarian	0	±14	0.0%	±1.1
Irish	848	±405	21.6%	±9.6
Italian	209	±217	5.3%	±5.3
Lithuanian	0	±14	0.0%	±1.1
Norwegian	0	±14	0.0%	±1.1
Polish	162	±185	4.1%	±4.6
Portuguese	13	±21	0.3%	±0.5
Russian	13	±21	0.3%	±0.5
Scotch-Irish	27	±39	0.7%	±1.0
Scottish	92	±61	2.3%	±1.5
Slovak	11	±18	0.3%	±0.5
Subsaharan African	0	±14	0.0%	±1.1

Table: ACSDP5Y2023.DP02

	Bethlehem CDP, North Carolina			
Label	Estimate	Margin of Error	Percent	Percent Margin of Error
Swedish	40	±65	1.0%	±1.6
Swiss	0	±14	0.0%	±1.1
Ukrainian	0	±14	0.0%	±1.1
Welsh	13	±23	0.3%	±0.6
West Indian (excluding Hispanic origin groups)	0	±14	0.0%	±1.1
COMPUTERS AND INTERNET USE				
Total households	1,685	±249	1,685	(X)
With a computer	1,659	±249	98.5%	±1.9
With a broadband Internet subscription	1,649	±250	97.9%	±2.2



Selected Economic Characteristics

Note: The table shown may have been modified by user selections. Some information may be missing.

DATA NOTES

TABLE ID:	DP03
SURVEY/PROGRAM:	American Community Survey
VINTAGE:	2023
DATASET:	ACSDP5Y2023
PRODUCT:	ACS 5-Year Estimates Data Profiles
UNIVERSE:	None
MLA:	U.S. Census Bureau, U.S. Department of Commerce. "Selected Economic Characteristics." American Community Survey, ACS 5-Year Estimates Data Profiles, Table DP03, 2023, https://data.census.gov/table/ACSDP5Y2023.DP03?q=dp03&g=160XX00US3705530 . Accessed on December 12, 2024.
FTP URL:	None
API URL:	https://api.census.gov/data/2023/acs/acs5/profile

USER SELECTIONS

TABLES	DP03
GEOS	Bethlehem CDP, North Carolina

EXCLUDED COLUMNS None

APPLIED FILTERS None

APPLIED SORTS None

PIVOT & GROUPING

PIVOT COLUMNS	None
PIVOT MODE	Off
ROW GROUPS	None
VALUE COLUMNS	None

WEB ADDRESS <https://data.census.gov/table/ACSDP5Y2023.DP03?q=dp03&g=160XX00US3705530>

TABLE NOTES

<p>Although the American Community Survey (ACS) produces population, demographic and housing unit estimates, the decennial census is the official source of population totals for April 1st of each decennial year. In between censuses, the Census Bureau's Population Estimates Program produces and disseminates the official estimates of the population for the nation, states, counties, cities, and towns and estimates of housing units and the group quarters population for states and counties.</p>
<p>Information about the American Community Survey (ACS) can be found on the ACS website. Supporting documentation including code lists, subject definitions, data accuracy, and statistical testing, and a full list of ACS tables and table shells (without estimates) can be found on the Technical Documentation section of the ACS website.</p> <p>Sample size and data quality measures (including coverage rates, allocation rates, and response rates) can be found on the American Community Survey website in the Methodology section.</p>
<p>Source: U.S. Census Bureau, 2019-2023 American Community Survey 5-Year Estimates</p>
<p>ACS data generally reflect the geographic boundaries of legal and statistical areas as of January 1 of the estimate year. For more information, see Geography Boundaries by Year.</p>

	Data are based on a sample and are subject to sampling variability. The degree of uncertainty for an estimate arising from sampling variability is represented through the use of a margin of error. The value shown here is the 90 percent margin of error. The margin of error can be interpreted roughly as providing a 90 percent probability that the interval defined by the estimate minus the margin of error and the estimate plus the margin of error (the lower and upper confidence bounds) contains the true value. In addition to sampling variability, the ACS estimates are subject to nonsampling error (for a discussion of nonsampling variability, see ACS Technical Documentation). The effect of nonsampling error is not represented in these tables.
	Users must consider potential differences in geographic boundaries, questionnaire content or coding, or other methodological issues when comparing ACS data from different years. Statistically significant differences shown in ACS Comparison Profiles, or in data users' own analysis, may be the result of these differences and thus might not necessarily reflect changes to the social, economic, housing, or demographic characteristics being compared. For more information, see Comparing ACS Data.
	Employment and unemployment estimates may vary from the official labor force data released by the Bureau of Labor Statistics because of differences in survey design and data collection. For guidance on differences in employment and unemployment estimates from different sources go to Labor Force Guidance.
	Workers include members of the Armed Forces and civilians who were at work last week.
	Occupation titles and their 4-digit codes are based on the 2018 Standard Occupational Classification.
	The health insurance coverage category names were modified in 2010. See https://www.census.gov/topics/health/health-insurance/about/glossary.html#par_textimage_18 for a list of the insurance type definitions.
	Beginning in 2017, selected variable categories were updated, including age-categories, income-to-poverty ratio (IPR) categories, and the age universe for certain employment and education variables. See user note entitled "Health Insurance Table Updates" for further details.
	Estimates of urban and rural populations, housing units, and characteristics reflect boundaries of urban areas defined based on 2020 Census data. As a result, data for urban and rural areas from the ACS do not necessarily reflect the results of ongoing urbanization.
	Explanation of Symbols:- The estimate could not be computed because there were an insufficient number of sample observations. For a ratio of medians estimate, one or both of the median estimates falls in the lowest interval or highest interval of an open-ended distribution. For a 5-year median estimate, the margin of error associated with a median was larger than the median itself.N The estimate or margin of error cannot be displayed because there were an insufficient number of sample cases in the selected geographic area. (X) The estimate or margin of error is not applicable or not available.median- The median falls in the lowest interval of an open-ended distribution (for example "2,500-")median+ The median falls in the highest interval of an open-ended distribution (for example "250,000+").** The margin of error could not be computed because there were an insufficient number of sample observations.*** The margin of error could not be computed because the median falls in the lowest interval or highest interval of an open-ended distribution.***** A margin of error is not appropriate because the corresponding estimate is controlled to an independent population or housing estimate. Effectively, the corresponding estimate has no sampling error and the margin of error may be treated as zero.
COLUMN NOTES	None

Table: ACSDP5Y2023.DP03

	Bethlehem CDP, North Carolina			
Label	Estimate	Margin of Error	Percent	Percent Margin of Error
EMPLOYMENT STATUS				
Population 16 years and over	3,476	±542	3,476	(X)
In labor force	1,898	±375	54.6%	±7.7
Civilian labor force	1,898	±375	54.6%	±7.7
Employed	1,846	±381	53.1%	±8.2
Unemployed	52	±69	1.5%	±2.0
Armed Forces	0	±14	0.0%	±1.2
Not in labor force	1,578	±381	45.4%	±7.7
Civilian labor force	1,898	±375	1,898	(X)
Unemployment Rate	(X)	(X)	2.7%	±3.7
Females 16 years and over	1,702	±314	1,702	(X)
In labor force	846	±211	49.7%	±11.2
Civilian labor force	846	±211	49.7%	±11.2
Employed	846	±211	49.7%	±11.2
Own children of the householder under 6 years	50	±41	50	(X)
All parents in family in labor force	42	±41	84.0%	±33.0
Own children of the householder 6 to 17 years	515	±218	515	(X)
All parents in family in labor force	494	±213	95.9%	±6.5
COMMUTING TO WORK				
Workers 16 years and over	1,846	±381	1,846	(X)
Car, truck, or van -- drove alone	1,507	±322	81.6%	±7.9
Car, truck, or van -- carpoled	110	±105	6.0%	±5.3
Public transportation (excluding taxicab)	0	±14	0.0%	±2.3
Walked	0	±14	0.0%	±2.3
Other means	32	±35	1.7%	±1.9
Worked from home	197	±131	10.7%	±6.5
Mean travel time to work (minutes)	32.6	±6.7	(X)	(X)
OCCUPATION				
Civilian employed population 16 years and over	1,846	±381	1,846	(X)
Management, business, science, and arts occupations	987	±223	53.5%	±10.1
Service occupations	120	±89	6.5%	±4.2
Sales and office occupations	543	±215	29.4%	±9.3

Table: ACSDP5Y2023.DP03

	Bethlehem CDP, North Carolina			
Label	Estimate	Margin of Error	Percent	Percent Margin of Error
Natural resources, construction, and maintenance occupations	52	±62	2.8%	±3.3
Production, transportation, and material moving occupations	144	±117	7.8%	±6.0
INDUSTRY				
Civilian employed population 16 years and over	1,846	±381	1,846	(X)
Agriculture, forestry, fishing and hunting, and mining	0	±14	0.0%	±2.3
Construction	61	±68	3.3%	±3.6
Manufacturing	164	±115	8.9%	±5.8
Wholesale trade	72	±68	3.9%	±3.6
Retail trade	292	±169	15.8%	±8.5
Transportation and warehousing, and utilities	113	±89	6.1%	±4.9
Information	40	±47	2.2%	±2.6
Finance and insurance, and real estate and rental and leasing	68	±54	3.7%	±3.0
Professional, scientific, and management, and administrative and waste management services	230	±171	12.5%	±8.2
Educational services, and health care and social assistance	568	±236	30.8%	±10.5
Arts, entertainment, and recreation, and accommodation and food services	174	±109	9.4%	±6.1
Other services, except public administration	42	±56	2.3%	±2.9
Public administration	22	±37	1.2%	±2.0
CLASS OF WORKER				
Civilian employed population 16 years and over	1,846	±381	1,846	(X)
Private wage and salary workers	1,438	±313	77.9%	±8.7
Government workers	224	±118	12.1%	±5.9

Table: ACSDP5Y2023.DP03

	Bethlehem CDP, North Carolina			
Label	Estimate	Margin of Error	Percent	Percent Margin of Error
Self-employed in own not incorporated business workers	184	±146	10.0%	±7.1
Unpaid family workers	0	±14	0.0%	±2.3
INCOME AND BENEFITS (IN 2023 INFLATION-ADJUSTED DOLLARS)				
Total households	1,685	±249	1,685	(X)
Less than \$10,000	27	±37	1.6%	±2.2
\$10,000 to \$14,999	50	±62	3.0%	±3.7
\$15,000 to \$24,999	48	±77	2.8%	±4.4
\$25,000 to \$34,999	82	±76	4.9%	±4.4
\$35,000 to \$49,999	142	±74	8.4%	±4.1
\$50,000 to \$74,999	418	±142	24.8%	±7.4
\$75,000 to \$99,999	263	±119	15.6%	±6.9
\$100,000 to \$149,999	266	±109	15.8%	±6.1
\$150,000 to \$199,999	140	±89	8.3%	±5.5
\$200,000 or more	249	±141	14.8%	±8.0
Median household income (dollars)	78,963	±9,368	(X)	(X)
Mean household income (dollars)	127,414	±32,464	(X)	(X)
With earnings	1,232	±212	73.1%	±7.1
Mean earnings (dollars)	131,729	±41,827	(X)	(X)
With Social Security	738	±177	43.8%	±8.1
Mean Social Security income (dollars)	27,558	±3,746	(X)	(X)
With retirement income	670	±169	39.8%	±7.8
Mean retirement income (dollars)	33,886	±10,902	(X)	(X)
With Supplemental Security Income	79	±68	4.7%	±3.9
Mean Supplemental Security Income (dollars)	9,768	±2,817	(X)	(X)
With cash public assistance income	53	±65	3.1%	±3.8
Mean cash public assistance income (dollars)	N	N	(X)	(X)
With Food Stamp/SNAP benefits in the past 12 months	64	±68	3.8%	±3.9
Families	1,197	±214	1,197	(X)
Less than \$10,000	16	±30	1.3%	±2.5
\$10,000 to \$14,999	0	±14	0.0%	±3.5

Table: ACSDP5Y2023.DP03

	Bethlehem CDP, North Carolina			
Label	Estimate	Margin of Error	Percent	Percent Margin of Error
\$15,000 to \$24,999	9	±19	0.8%	±1.6
\$25,000 to \$34,999	11	±20	0.9%	±1.6
\$35,000 to \$49,999	93	±69	7.8%	±5.2
\$50,000 to \$74,999	232	±107	19.4%	±7.9
\$75,000 to \$99,999	226	±120	18.9%	±9.9
\$100,000 to \$149,999	224	±104	18.7%	±7.7
\$150,000 to \$199,999	140	±89	11.7%	±7.7
\$200,000 or more	246	±140	20.6%	±10.9
Median family income (dollars)	105,781	±27,084	(X)	(X)
Mean family income (dollars)	156,360	±43,031	(X)	(X)
Per capita income (dollars)	60,355	±15,277	(X)	(X)
Nonfamily households	488	±145	488	(X)
Median nonfamily income (dollars)	55,769	±22,065	(X)	(X)
Mean nonfamily income (dollars)	56,415	±13,417	(X)	(X)
Median earnings for workers (dollars)	57,348	±11,340	(X)	(X)
Median earnings for male full-time, year-round workers (dollars)	84,257	±33,903	(X)	(X)
Median earnings for female full-time, year-round workers (dollars)	58,722	±11,844	(X)	(X)
HEALTH INSURANCE COVERAGE				
Civilian noninstitutionalized population	3,928	±594	3,928	(X)
With health insurance coverage	3,609	±542	91.9%	±4.5
With private health insurance	2,996	±527	76.3%	±8.1
With public coverage	1,438	±312	36.6%	±6.7
No health insurance coverage	319	±193	8.1%	±4.5
Civilian noninstitutionalized population under 19 years	702	±229	702	(X)
No health insurance coverage	0	±14	0.0%	±5.9
Civilian noninstitutionalized population 19 to 64 years	2,159	±412	2,159	(X)
In labor force:	1,561	±309	1,561	(X)
Employed:	1,509	±309	1,509	(X)

Table: ACSDP5Y2023.DP03

	Bethlehem CDP, North Carolina			
Label	Estimate	Margin of Error	Percent	Percent Margin of Error
With health insurance coverage	1,368	±285	90.7%	±7.9
With private health insurance	1,368	±285	90.7%	±7.9
With public coverage	41	±45	2.7%	±3.1
No health insurance coverage	141	±128	9.3%	±7.9
Unemployed:	52	±69	52	(X)
With health insurance coverage	0	±14	0.0%	±47.0
With private health insurance	0	±14	0.0%	±47.0
With public coverage	0	±14	0.0%	±47.0
No health insurance coverage	52	±69	100.0%	±47.0
Not in labor force:	598	±256	598	(X)
With health insurance coverage	472	±229	78.9%	±16.2
With private health insurance	405	±217	67.7%	±17.9
With public coverage	140	±107	23.4%	±16.9
No health insurance coverage	126	±106	21.1%	±16.2
PERCENTAGE OF FAMILIES AND PEOPLE WHOSE INCOME IN THE PAST 12 MONTHS IS BELOW THE POVERTY LEVEL				
All families	(X)	(X)	2.1%	±3.1
With related children of the householder under 18 years	(X)	(X)	2.7%	±6.2
With related children of the householder under 5 years only	(X)	(X)	52.9%	±52.9
Married couple families	(X)	(X)	1.7%	±3.2
With related children of the householder under 18 years	(X)	(X)	0.0%	±21.5
With related children of the householder under 5 years only	(X)	(X)	0.0%	±100.0
Families with female householder, no spouse present	(X)	(X)	5.0%	±11.6

Table: ACSDP5Y2023.DP03

	Bethlehem CDP, North Carolina			
Label	Estimate	Margin of Error	Percent	Percent Margin of Error
With related children of the householder under 18 years	(X)	(X)	12.9%	±35.0
With related children of the householder under 5 years only	(X)	(X)	100.0%	±100.0
All people	(X)	(X)	3.9%	±2.7
Under 18 years	(X)	(X)	1.4%	±2.9
Related children of the householder under 18 years	(X)	(X)	1.4%	±2.9
Related children of the householder under 5 years	(X)	(X)	20.0%	±43.4
Related children of the householder 5 to 17 years	(X)	(X)	0.0%	±7.6
18 years and over	(X)	(X)	4.3%	±3.0
18 to 64 years	(X)	(X)	5.7%	±4.2
65 years and over	(X)	(X)	1.3%	±2.2
People in families	(X)	(X)	1.3%	±1.9
Unrelated individuals 15 years and over	(X)	(X)	19.3%	±13.1



Selected Housing Characteristics

Note: The table shown may have been modified by user selections. Some information may be missing.

DATA NOTES

TABLE ID:	DP04
SURVEY/PROGRAM:	American Community Survey
VINTAGE:	2023
DATASET:	ACSDP5Y2023
PRODUCT:	ACS 5-Year Estimates Data Profiles
UNIVERSE:	None
MLA:	U.S. Census Bureau, U.S. Department of Commerce. "Selected Housing Characteristics." American Community Survey, ACS 5-Year Estimates Data Profiles, Table DP04, 2023, https://data.census.gov/table/ACSDP5Y2023.DP04?q=dp04&g=160XX00US3705530 . Accessed on December 12, 2024.
FTP URL:	None
API URL:	https://api.census.gov/data/2023/acs/acs5/profile

USER SELECTIONS

TABLES	DP04
GEOS	Bethlehem CDP, North Carolina

EXCLUDED COLUMNS None

APPLIED FILTERS None

APPLIED SORTS None

PIVOT & GROUPING

PIVOT COLUMNS	None
PIVOT MODE	Off
ROW GROUPS	None
VALUE COLUMNS	None

WEB ADDRESS <https://data.census.gov/table/ACSDP5Y2023.DP04?q=dp04&g=160XX00US3705530>

TABLE NOTES

	Although the American Community Survey (ACS) produces population, demographic and housing unit estimates, the decennial census is the official source of population totals for April 1st of each decennial year. In between censuses, the Census Bureau's Population Estimates Program produces and disseminates the official estimates of the population for the nation, states, counties, cities, and towns and estimates of housing units and the group quarters population for states and counties.
	Information about the American Community Survey (ACS) can be found on the ACS website. Supporting documentation including code lists, subject definitions, data accuracy, and statistical testing, and a full list of ACS tables and table shells (without estimates) can be found on the Technical Documentation section of the ACS website. Sample size and data quality measures (including coverage rates, allocation rates, and response rates) can be found on the American Community Survey website in the Methodology section.
	Source: U.S. Census Bureau, 2019-2023 American Community Survey 5-Year Estimates
	ACS data generally reflect the geographic boundaries of legal and statistical areas as of January 1 of the estimate year. For more information, see Geography Boundaries by Year .

	Data are based on a sample and are subject to sampling variability. The degree of uncertainty for an estimate arising from sampling variability is represented through the use of a margin of error. The value shown here is the 90 percent margin of error. The margin of error can be interpreted roughly as providing a 90 percent probability that the interval defined by the estimate minus the margin of error and the estimate plus the margin of error (the lower and upper confidence bounds) contains the true value. In addition to sampling variability, the ACS estimates are subject to nonsampling error (for a discussion of nonsampling variability, see ACS Technical Documentation). The effect of nonsampling error is not represented in these tables.
	Users must consider potential differences in geographic boundaries, questionnaire content or coding, or other methodological issues when comparing ACS data from different years. Statistically significant differences shown in ACS Comparison Profiles, or in data users' own analysis, may be the result of these differences and thus might not necessarily reflect changes to the social, economic, housing, or demographic characteristics being compared. For more information, see Comparing ACS Data.
	Households not paying cash rent are excluded from the calculation of median gross rent.
	Telephone service data are not available for certain geographic areas due to problems with data collection of this question that occurred in 2019. Both ACS 1-year and ACS 5-year files were affected. It may take several years in the ACS 5-year files until the estimates are available for the geographic areas affected.
	Estimates of urban and rural populations, housing units, and characteristics reflect boundaries of urban areas defined based on 2020 Census data. As a result, data for urban and rural areas from the ACS do not necessarily reflect the results of ongoing urbanization.
	Explanation of Symbols:- The estimate could not be computed because there were an insufficient number of sample observations. For a ratio of medians estimate, one or both of the median estimates falls in the lowest interval or highest interval of an open-ended distribution. For a 5-year median estimate, the margin of error associated with a median was larger than the median itself.N The estimate or margin of error cannot be displayed because there were an insufficient number of sample cases in the selected geographic area. (X) The estimate or margin of error is not applicable or not available.median- The median falls in the lowest interval of an open-ended distribution (for example "2,500-")median+ The median falls in the highest interval of an open-ended distribution (for example "250,000+").** The margin of error could not be computed because there were an insufficient number of sample observations.*** The margin of error could not be computed because the median falls in the lowest interval or highest interval of an open-ended distribution.**** A margin of error is not appropriate because the corresponding estimate is controlled to an independent population or housing estimate. Effectively, the corresponding estimate has no sampling error and the margin of error may be treated as zero.
COLUMN NOTES	None

Table: ACSDP5Y2023.DP04

	Bethlehem CDP, North Carolina			
Label	Estimate	Margin of Error	Percent	Percent Margin of Error
HOUSING OCCUPANCY				
Total housing units	1,793	±263	1,793	(X)
Occupied housing units	1,685	±249	94.0%	±5.0
Vacant housing units	108	±94	6.0%	±5.0
Homeowner vacancy rate	0.6	±1.1	(X)	(X)
Rental vacancy rate	0.0	±16.2	(X)	(X)
UNITS IN STRUCTURE				
Total housing units	1,793	±263	1,793	(X)
1-unit, detached	1,536	±267	85.7%	±7.4
1-unit, attached	36	±56	2.0%	±3.1
2 units	90	±77	5.0%	±4.3
3 or 4 units	0	±14	0.0%	±2.3
5 to 9 units	0	±14	0.0%	±2.3
10 to 19 units	0	±14	0.0%	±2.3
20 or more units	0	±14	0.0%	±2.3
Mobile home	131	±117	7.3%	±6.4
Boat, RV, van, etc.	0	±14	0.0%	±2.3
YEAR STRUCTURE BUILT				
Total housing units	1,793	±263	1,793	(X)
Built 2020 or later	28	±45	1.6%	±2.5
Built 2010 to 2019	94	±96	5.2%	±5.1
Built 2000 to 2009	344	±132	19.2%	±7.4
Built 1990 to 1999	504	±164	28.1%	±8.2
Built 1980 to 1989	275	±162	15.3%	±8.8
Built 1970 to 1979	317	±113	17.7%	±5.8
Built 1960 to 1969	106	±86	5.9%	±4.8
Built 1950 to 1959	32	±36	1.8%	±2.0
Built 1940 to 1949	32	±50	1.8%	±2.8
Built 1939 or earlier	61	±68	3.4%	±3.5
ROOMS				
Total housing units	1,793	±263	1,793	(X)
1 room	19	±30	1.1%	±1.7
2 rooms	0	±14	0.0%	±2.3
3 rooms	24	±33	1.3%	±1.8
4 rooms	185	±94	10.3%	±4.9
5 rooms	415	±181	23.1%	±8.8
6 rooms	363	±154	20.2%	±8.5
7 rooms	242	±137	13.5%	±7.3
8 rooms	116	±74	6.5%	±4.3
9 rooms or more	429	±149	23.9%	±7.7
Median rooms	6.2	±0.5	(X)	(X)
BEDROOMS				
Total housing units	1,793	±263	1,793	(X)

Table: ACSDP5Y2023.DP04

	Bethlehem CDP, North Carolina			
Label	Estimate	Margin of Error	Percent	Percent Margin of Error
No bedroom	19	±30	1.1%	±1.7
1 bedroom	24	±33	1.3%	±1.8
2 bedrooms	285	±156	15.9%	±7.9
3 bedrooms	987	±213	55.0%	±10.3
4 bedrooms	380	±187	21.2%	±9.7
5 or more bedrooms	98	±70	5.5%	±4.0
HOUSING TENURE				
Occupied housing units	1,685	±249	1,685	(X)
Owner-occupied	1,445	±244	85.8%	±8.6
Renter-occupied	240	±153	14.2%	±8.6
Average household size of owner-occupied unit	2.37	±0.29	(X)	(X)
Average household size of renter-occupied unit	2.12	±0.75	(X)	(X)
YEAR HOUSEHOLDER MOVED INTO UNIT				
Occupied housing units	1,685	±249	1,685	(X)
Moved in 2021 or later	78	±77	4.6%	±4.6
Moved in 2018 to 2020	171	±96	10.1%	±5.5
Moved in 2010 to 2017	483	±216	28.7%	±11.5
Moved in 2000 to 2009	391	±162	23.2%	±9.2
Moved in 1990 to 1999	402	±163	23.9%	±9.1
Moved in 1989 and earlier	160	±69	9.5%	±4.2
VEHICLES AVAILABLE				
Occupied housing units	1,685	±249	1,685	(X)
No vehicles available	20	±28	1.2%	±1.7
1 vehicle available	419	±165	24.9%	±9.2
2 vehicles available	683	±167	40.5%	±9.4
3 or more vehicles available	563	±218	33.4%	±10.9
HOUSE HEATING FUEL				
Occupied housing units	1,685	±249	1,685	(X)
Utility gas	404	±157	24.0%	±9.4
Bottled, tank, or LP gas	132	±102	7.8%	±5.7
Electricity	1,107	±244	65.7%	±9.7
Fuel oil, kerosene, etc.	19	±31	1.1%	±1.8
Coal or coke	0	±14	0.0%	±2.5
Wood	10	±17	0.6%	±1.0
Solar energy	0	±14	0.0%	±2.5
Other fuel	0	±14	0.0%	±2.5
No fuel used	13	±20	0.8%	±1.2
SELECTED CHARACTERISTICS				
Occupied housing units	1,685	±249	1,685	(X)

Table: ACSDP5Y2023.DP04

	Bethlehem CDP, North Carolina			
Label	Estimate	Margin of Error	Percent	Percent Margin of Error
Lacking complete plumbing facilities	0	±14	0.0%	±2.5
Lacking complete kitchen facilities	0	±14	0.0%	±2.5
No telephone service available	0	±14	0.0%	±2.5
OCCUPANTS PER ROOM				
Occupied housing units	1,685	±249	1,685	(X)
1.00 or less	1,657	±249	98.3%	±2.1
1.01 to 1.50	9	±18	0.5%	±1.0
1.51 or more	19	±30	1.1%	±1.8
VALUE				
Owner-occupied units	1,445	±244	1,445	(X)
Less than \$50,000	19	±24	1.3%	±1.6
\$50,000 to \$99,999	23	±26	1.6%	±1.8
\$100,000 to \$149,999	128	±101	8.9%	±6.7
\$150,000 to \$199,999	217	±121	15.0%	±7.7
\$200,000 to \$299,999	355	±152	24.6%	±9.4
\$300,000 to \$499,999	393	±113	27.2%	±8.3
\$500,000 to \$999,999	282	±151	19.5%	±9.4
\$1,000,000 or more	28	±42	1.9%	±3.0
Median (dollars)	290,600	±67,615	(X)	(X)
MORTGAGE STATUS				
Owner-occupied units	1,445	±244	1,445	(X)
Housing units with a mortgage	812	±223	56.2%	±10.5
Housing units without a mortgage	633	±164	43.8%	±10.5
SELECTED MONTHLY OWNER COSTS (SMOC)				
Housing units with a mortgage	812	±223	812	(X)
Less than \$500	20	±26	2.5%	±3.3
\$500 to \$999	144	±113	17.7%	±12.5
\$1,000 to \$1,499	228	±128	28.1%	±13.0
\$1,500 to \$1,999	173	±111	21.3%	±12.9
\$2,000 to \$2,499	114	±87	14.0%	±10.6
\$2,500 to \$2,999	14	±22	1.7%	±2.7
\$3,000 or more	119	±119	14.7%	±13.8
Median (dollars)	1,544	±299	(X)	(X)
Housing units without a mortgage	633	±164	633	(X)
Less than \$250	21	±28	3.3%	±4.3
\$250 to \$399	56	±44	8.8%	±7.4

Table: ACSDP5Y2023.DP04

	Bethlehem CDP, North Carolina			
Label	Estimate	Margin of Error	Percent	Percent Margin of Error
\$400 to \$599	280	±99	44.2%	±13.3
\$600 to \$799	182	±102	28.8%	±11.9
\$800 to \$999	78	±65	12.3%	±9.8
\$1,000 or more	16	±30	2.5%	±4.6
Median (dollars)	582	±30	(X)	(X)
SELECTED MONTHLY OWNER COSTS AS A PERCENTAGE OF HOUSEHOLD INCOME (SMOCAPI)				
Housing units with a mortgage (excluding units where SMOCAPI cannot be computed)	812	±223	812	(X)
Less than 20.0 percent	441	±187	54.3%	±17.1
20.0 to 24.9 percent	113	±92	13.9%	±10.7
25.0 to 29.9 percent	79	±74	9.7%	±8.6
30.0 to 34.9 percent	28	±42	3.4%	±5.4
35.0 percent or more	151	±104	18.6%	±11.6
Not computed	0	±14	(X)	(X)
Housing unit without a mortgage (excluding units where SMOCAPI cannot be computed)	617	±161	617	(X)
Less than 10.0 percent	307	±116	49.8%	±17.5
10.0 to 14.9 percent	135	±64	21.9%	±9.1
15.0 to 19.9 percent	29	±31	4.7%	±5.0
20.0 to 24.9 percent	9	±15	1.5%	±2.4
25.0 to 29.9 percent	76	±100	12.3%	±14.9
30.0 to 34.9 percent	0	±14	0.0%	±6.7
35.0 percent or more	61	±64	9.9%	±10.2
Not computed	16	±30	(X)	(X)
GROSS RENT				
Occupied units paying rent	197	±146	197	(X)
Less than \$500	0	±14	0.0%	±19.3
\$500 to \$999	136	±112	69.0%	±34.7
\$1,000 to \$1,499	61	±82	31.0%	±34.7
\$1,500 to \$1,999	0	±14	0.0%	±19.3
\$2,000 to \$2,499	0	±14	0.0%	±19.3
\$2,500 to \$2,999	0	±14	0.0%	±19.3
\$3,000 or more	0	±14	0.0%	±19.3
Median (dollars)	737	±291	(X)	(X)
No rent paid	43	±50	(X)	(X)

Table: ACSDP5Y2023.DP04

	Bethlehem CDP, North Carolina			
Label	Estimate	Margin of Error	Percent	Percent Margin of Error
GROSS RENT AS A PERCENTAGE OF HOUSEHOLD INCOME (GRAPI)				
Occupied units paying rent (excluding units where GRAPI cannot be computed)	197	±146	197	(X)
Less than 15.0 percent	112	±109	56.9%	±36.7
15.0 to 19.9 percent	61	±82	31.0%	±34.7
20.0 to 24.9 percent	0	±14	0.0%	±19.3
25.0 to 29.9 percent	0	±14	0.0%	±19.3
30.0 to 34.9 percent	15	±26	7.6%	±14.1
35.0 percent or more	9	±19	4.6%	±10.6
Not computed	43	±50	(X)	(X)

ACS Demographic and Housing Estimates



Note: The table shown may have been modified by user selections. Some information may be missing.

DATA NOTES

TABLE ID:	DP05
SURVEY/PROGRAM:	American Community Survey
VINTAGE:	2023
DATASET:	ACSDP5Y2023
PRODUCT:	ACS 5-Year Estimates Data Profiles
UNIVERSE:	None
MLA:	U.S. Census Bureau, U.S. Department of Commerce. "ACS Demographic and Housing Estimates." American Community Survey, ACS 5-Year Estimates Data Profiles, Table DP05, 2023, https://data.census.gov/table/ACSDP5Y2023.DP05?q=dp05&g=160XX00US3705530 . Accessed on December 12, 2024.
FTP URL:	None
API URL:	https://api.census.gov/data/2023/acs/acs5/profile

USER SELECTIONS

TABLES	DP05
GEOS	Bethlehem CDP, North Carolina

EXCLUDED COLUMNS None

APPLIED FILTERS None

APPLIED SORTS None

PIVOT & GROUPING

PIVOT COLUMNS	None
PIVOT MODE	Off
ROW GROUPS	None
VALUE COLUMNS	None

WEB ADDRESS <https://data.census.gov/table/ACSDP5Y2023.DP05?q=dp05&g=160XX00US3705530>

TABLE NOTES

	Although the American Community Survey (ACS) produces population, demographic and housing unit estimates, the decennial census is the official source of population totals for April 1st of each decennial year. In between censuses, the Census Bureau's Population Estimates Program produces and disseminates the official estimates of the population for the nation, states, counties, cities, and towns and estimates of housing units and the group quarters population for states and counties.
	Information about the American Community Survey (ACS) can be found on the ACS website. Supporting documentation including code lists, subject definitions, data accuracy, and statistical testing, and a full list of ACS tables and table shells (without estimates) can be found on the Technical Documentation section of the ACS website. Sample size and data quality measures (including coverage rates, allocation rates, and response rates) can be found on the American Community Survey website in the Methodology section.
	Source: U.S. Census Bureau, 2019-2023 American Community Survey 5-Year Estimates
	ACS data generally reflect the geographic boundaries of legal and statistical areas as of January 1 of the estimate year. For more information, see Geography Boundaries by Year .

	<p>Data are based on a sample and are subject to sampling variability. The degree of uncertainty for an estimate arising from sampling variability is represented through the use of a margin of error. The value shown here is the 90 percent margin of error. The margin of error can be interpreted roughly as providing a 90 percent probability that the interval defined by the estimate minus the margin of error and the estimate plus the margin of error (the lower and upper confidence bounds) contains the true value. In addition to sampling variability, the ACS estimates are subject to nonsampling error (for a discussion of nonsampling variability, see ACS Technical Documentation). The effect of nonsampling error is not represented in these tables.</p>
	<p>Users must consider potential differences in geographic boundaries, questionnaire content or coding, or other methodological issues when comparing ACS data from different years. Statistically significant differences shown in ACS Comparison Profiles, or in data users' own analysis, may be the result of these differences and thus might not necessarily reflect changes to the social, economic, housing, or demographic characteristics being compared. For more information, see Comparing ACS Data.</p>
	<p>For more information on understanding Hispanic origin and race data, please see the America Counts: Stories Behind the Numbers article entitled, 2020 Census Illuminates Racial and Ethnic Composition of the Country, issued August 2021.</p>
	<p>The Hispanic origin and race codes were updated in 2020. For more information on the Hispanic origin and race code changes, please visit the American Community Survey Technical Documentation website.</p>
	<p>Estimates of urban and rural populations, housing units, and characteristics reflect boundaries of urban areas defined based on 2020 Census data. As a result, data for urban and rural areas from the ACS do not necessarily reflect the results of ongoing urbanization.</p>
	<p>Explanation of Symbols:- The estimate could not be computed because there were an insufficient number of sample observations. For a ratio of medians estimate, one or both of the median estimates falls in the lowest interval or highest interval of an open-ended distribution. For a 5-year median estimate, the margin of error associated with a median was larger than the median itself. N The estimate or margin of error cannot be displayed because there were an insufficient number of sample cases in the selected geographic area. (X) The estimate or margin of error is not applicable or not available. median- The median falls in the lowest interval of an open-ended distribution (for example "2,500-") median+ The median falls in the highest interval of an open-ended distribution (for example "250,000+").** The margin of error could not be computed because there were an insufficient number of sample observations.*** The margin of error could not be computed because the median falls in the lowest interval or highest interval of an open-ended distribution.***** A margin of error is not appropriate because the corresponding estimate is controlled to an independent population or housing estimate. Effectively, the corresponding estimate has no sampling error and the margin of error may be treated as zero.</p>
COLUMN NOTES	None

Table: ACSDP5Y2023.DP05

	Bethlehem CDP, North Carolina			
Label	Estimate	Margin of Error	Percent	Percent Margin of Error
SEX AND AGE				
Total population	3,928	±594	3,928	(X)
Male	2,012	±365	51.2%	±5.0
Female	1,916	±347	48.8%	±5.0
Sex ratio (males per 100 females)	105.0	±20.9	(X)	(X)
Under 5 years	40	±41	1.0%	±1.0
5 to 9 years	202	±139	5.1%	±3.4
10 to 14 years	197	±148	5.0%	±3.7
15 to 19 years	263	±148	6.7%	±3.6
20 to 24 years	80	±89	2.0%	±2.2
25 to 34 years	303	±190	7.7%	±4.6
35 to 44 years	458	±136	11.7%	±3.2
45 to 54 years	647	±224	16.5%	±5.4
55 to 59 years	261	±127	6.6%	±3.3
60 to 64 years	410	±213	10.4%	±4.8
65 to 74 years	654	±236	16.6%	±5.5
75 to 84 years	315	±109	8.0%	±2.9
85 years and over	98	±97	2.5%	±2.4
Median age (years)	52.3	±5.2	(X)	(X)
Under 18 years	574	±216	14.6%	±4.8
16 years and over	3,476	±542	88.5%	±4.6
18 years and over	3,354	±517	85.4%	±4.8
21 years and over	3,226	±518	82.1%	±5.1
62 years and over	1,335	±346	34.0%	±7.0
65 years and over	1,067	±253	27.2%	±5.6
18 years and over	3,354	±517	3,354	(X)
Male	1,691	±288	50.4%	±4.3
Female	1,663	±304	49.6%	±4.3
Sex ratio (males per 100 females)	101.7	±17.4	(X)	(X)
65 years and over	1,067	±253	1,067	(X)
Male	562	±183	52.7%	±9.6
Female	505	±143	47.3%	±9.6
Sex ratio (males per 100 females)	111.3	±42.1	(X)	(X)
RACE				
Total population	3,928	±594	3,928	(X)
One race	3,846	±583	97.9%	±1.9
Two or More Races	82	±77	2.1%	±1.9
One race	3,846	±583	97.9%	±1.9
White	3,548	±593	90.3%	±3.7
Black or African American	0	±14	0.0%	±1.1

Table: ACSDP5Y2023.DP05

	Bethlehem CDP, North Carolina			
Label	Estimate	Margin of Error	Percent	Percent Margin of Error
American Indian and Alaska Native	0	±14	0.0%	±1.1
Aztec	0	±14	0.0%	±1.1
Blackfeet Tribe of the Blackfeet Indian Reservation of Montana	0	±14	0.0%	±1.1
Maya	0	±14	0.0%	±1.1
Native Village of Barrow Inupiat Traditional Government	0	±14	0.0%	±1.1
Navajo Nation	0	±14	0.0%	±1.1
Nome Eskimo Community	0	±14	0.0%	±1.1
Other American Indian and Alaska Native	0	±14	0.0%	±1.1
Asian	298	±128	7.6%	±3.4
Asian Indian	101	±123	2.6%	±3.1
Chinese	197	±159	5.0%	±4.2
Filipino	0	±14	0.0%	±1.1
Japanese	0	±14	0.0%	±1.1
Korean	0	±14	0.0%	±1.1
Vietnamese	0	±14	0.0%	±1.1
Other Asian	0	±14	0.0%	±1.1
Native Hawaiian and Other Pacific Islander	0	±14	0.0%	±1.1
Chamorro	0	±14	0.0%	±1.1
Native Hawaiian	0	±14	0.0%	±1.1
Samoaan	0	±14	0.0%	±1.1
Other Native Hawaiian and Other Pacific Islander	0	±14	0.0%	±1.1
Some Other Race	0	±14	0.0%	±1.1
Two or More Races	82	±77	2.1%	±1.9
White and Black or African American	0	±14	0.0%	±1.1
White and American Indian and Alaska Native	53	±66	1.3%	±1.7
White and Asian	29	±49	0.7%	±1.2
White and Some Other Race	0	±14	0.0%	±1.1
Black or African American and American Indian and Alaska Native	0	±14	0.0%	±1.1
Black or African American and Some Other Race	0	±14	0.0%	±1.1

Table: ACSDP5Y2023.DP05

	Bethlehem CDP, North Carolina			
Label	Estimate	Margin of Error	Percent	Percent Margin of Error
Race alone or in combination with one or more other races				
Total population	3,928	±594	3,928	(X)
White	3,630	±607	92.4%	±3.4
Black or African American	0	±14	0.0%	±1.1
American Indian and Alaska Native	53	±66	1.3%	±1.7
Asian	327	±126	8.3%	±3.4
Native Hawaiian and Other Pacific Islander	0	±14	0.0%	±1.1
Some Other Race	0	±14	0.0%	±1.1
HISPANIC OR LATINO AND RACE				
Total population	3,928	±594	3,928	(X)
Hispanic or Latino (of any race)	132	±228	3.4%	±5.8
Mexican	0	±14	0.0%	±1.1
Puerto Rican	0	±14	0.0%	±1.1
Cuban	0	±14	0.0%	±1.1
Other Hispanic or Latino	132	±228	3.4%	±5.8
Not Hispanic or Latino	3,796	±596	96.6%	±5.8
White alone	3,416	±596	87.0%	±6.7
Black or African American alone	0	±14	0.0%	±1.1
American Indian and Alaska Native alone	0	±14	0.0%	±1.1
Asian alone	298	±128	7.6%	±3.4
Native Hawaiian and Other Pacific Islander alone	0	±14	0.0%	±1.1
Some Other Race alone	0	±14	0.0%	±1.1
Two or More Races	82	±77	2.1%	±1.9
Two races including Some Other Race	0	±14	0.0%	±1.1
Two races excluding Some Other Race, and three or more races	82	±77	2.1%	±1.9
Total housing units	1,793	±263	(X)	(X)
CITIZEN, VOTING AGE POPULATION				
Citizen, 18 and over population	3,354	±517	3,354	(X)
Male	1,691	±288	50.4%	±4.3
Female	1,663	±304	49.6%	±4.3