

MONTHLY IMPACT REPORT

MAY 2017



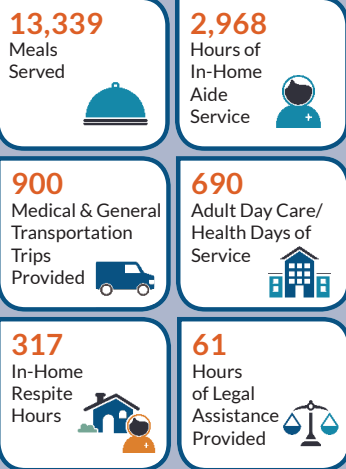
Western Piedmont
Council of Governments

Creative Regional Solutions Since 1968

ADMINISTRATION - Anthony Starr | Sherry Long | Ashley Bolick | Jason Toney | Judy Caldwell | Amanda Wallace
FINANCE - Andrea Biddix | April Lail | Sandy Jones

AREA AGENCY ON AGING

Tina Miller
Christina Franklin
Mary Mitchell
Karen Phoenix
Sarah Evitt
Anita Roberts

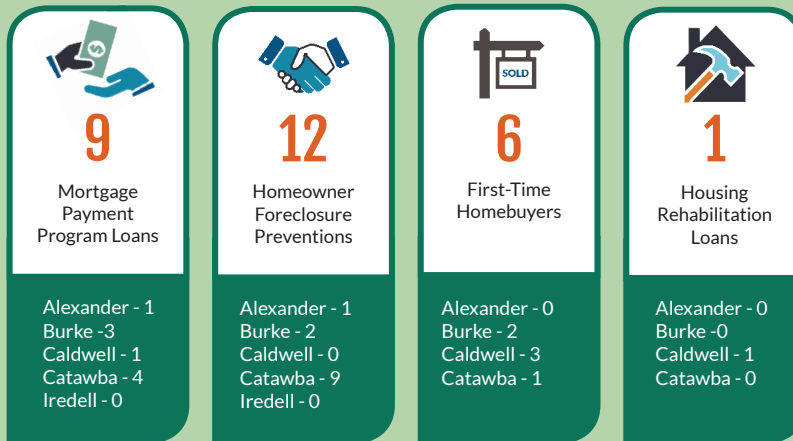


- 4 community presentations
- Collaborated with community partners for community education event – The Beauty of Music & Memory in Burke County
- Participated with Celebration of Life event in Caldwell County
- Taught 3 classes on Powerful Tools for Caregivers
- Local Contact Agency program had 4 new referrals from the Raleigh call center; 6 LCA follow-up visits; 4 in-reach visits with facility social workers; and 2 Information and Options Counseling contacts
- 3 Reverse Mortgage Counseling sessions provided
- Conducted 1 Medicare Outreach Event
- Ombudsman program made visits to 14 facilities; received 4 new investigations; closed 3 cases; and provided technical assistance to 40 individuals; and provided 1 training to a facility
- Project CARE completed 8 assessments, 2 Home Visits and granted 0 vouchers during the month of May due to state deadlines (total of 64 vouchers issued out of 64 for the territory). Completed 10 outreach visits to referral agencies and presented training sessions to reach more than 620 people with Project CARE information

The Area Agency on Aging collaborated with local agencies and organizer, Grace Ridge Retirement Community, to present a free community education event on May 18, featuring Teepa Snow, a nationally recognized dementia educator and Ron Gregory, founder of Alzheimer's Music Connect. The regional event entitled "The Beauty of Music & Memory" offered engaging, practical and valuable information to assist family and professional caregivers who are caring for someone with dementia. Morning and afternoon sessions were offered with over 300 participants attending.

COMMUNITY & ECONOMIC DEVELOPMENT

Sherry Long
Rick Oxford
Leah Martin
Laurie Powell
Lisa Helton
Ken Hollar
Jennifer Cannon
Helen Whisnant
Deanna Butcher



To date, the WPCOG has assisted 824 clients through the NC Housing Finance Agency's Hardest Hit Fund's Principle Reduction Recast/Lein Extinguishment (PRRLE) program. To learn more about PRRLE or other programs offered through the Mortgage Payment Program, please call Laurie Powell at (828)485-4249.

- Grants Awarded for Burke County - Kellex \$400,000 & Continental \$1 million

IT/GEOGRAPHIC INFORMATION SYSTEMS

Scott Miller
Daniel Ezell
Tom Bell
Todd Stroupe
Trey Schweitzer



Greenway Transit

- Greenway Passenger Sampling Trips – 18

End User Support

- Help train Hickory employee to use editing tools in ArcGIS Desktop for line edits.
- Help train a new Hickory employee with the basic use of ArcGIS Desktop to navigate around existing project, plus identify infrastructure GIS layers.
- Added SDE connections to a new Hickory employee ArcGIS Desktop project.
- Created updated map-books. Includes new index page for manhole ID & location.

General Mapping Support

- Claremont, Drexel, Hickory, Hildebran, Hudson, Valdese, Greater Hickory MPO and WPCOG Community & Economic Development.

Data

- Consulting firm request for Hickory GIS data layers for a citywide street map
- Fire department monthly Neighborhood incident report

Application Programming

- 123Survey application for Zoning Enforcement. Replaces paper version.
- ArcGIS Online application for Hickory's zoning layer and overlays.

Other Activities

- Burke County Community Assets Mapping Project
- Created identification schema for 1,100 Maiden sewer manholes. Allows manholes to be identified by basin, line and flow direction.
- With IT/GIS intern, began creation of online GIS layer of regional four-county aerial photography from 1973.

John Marshall
 Johnny Wear
 Taylor Dellinger
 Teresa Kinney
 Erin Schotte
 Cody Moneymaker
 Leslie Meadows
 Averi Ritchie
 Duncan Cavanaugh

Planning

- Attended 16 Commission, Council and Planning Board meetings
- Land use mapping for Glen Alpine and Zoning Ordinance Review
- Reviewed Minor Subdivisions for Hudson, Gamewell and Rutherford College
- Text Amendment for Town of Hudson Accessory Structures
- Text Amendment for Town of Gamewell -Treehouses
- Attended "Growing Greenways" Workshop at Asheville Arboretum
- Claremont text amendment adopted by City Council; added 3 new permitted-by-rights to Light Manufacturing (M-1) district
- Held a Plan Review Committee meeting in Claremont for Williams-Sonoma project
- Presented Sawmills Recreation Plan to Town Council for adoption
- Attended ribbon cutting for Valdese EV charging station and submitted final reimbursement request to Duke
- Held recreation committee meeting to review public input for Drexel Recreation Plan

Transportation

- CEDS presentation on regional transportation issues
- Attended Freight workshop at Land of Sky Regional Council
- Met with Burke County Transit Committee to discuss future public transportation options
- Met with WPCO officials to discuss potential future sites for the

Burke County Emergency Services Training Center

- Greenway Transportation Advisory Board meeting to adopt Local Coordinated Plan
- Attended Greenway Symposium in Asheville to discuss future greenway plans and public involvement
- Meeting with KB Reynolds representative to discuss future grants

Data

- Answered 66 requests for data during month of May
- Updated Census Tract information for Burke County, Morganton, and Caldwell County building permits
- Completed demographic and economic information (Within 50 & 100 mile radius, NC 16 & NC 150 in Catawba County)
- Assisted Centralina COG with tourism impact analysis of downtown events in Statesville
- Completed work on "Air Quality" portion of the Environmental chapter for the MTP report
- Completed work on Appendix A (TAZ Population and Housing) Tables for MTP report
- Completed May 2017 Hickory Economic Indicators Report

Environmental

- Held Quarterly Western Piedmont Unifour Air Quality Committee - Duke Energy guest speaker
- Septic Tank Repair construction and repair continued
- Began Environmental Assessment in the Town of Valdese

REGIONAL HOUSING AUTHORITY

Stephanie Harvey
 Vicky Abernethy
 Kala Guido
 JoAnn Parlier
 Elizabeth Moncrief
 Kim Duncan
 By Khang



1,109
Units Leased



52
In Office Client Meetings



155
Inspections Completed



1
Vouchers Issued



1,354
Waiting List



42
Total Vouchers Pending



0
Congratulation Letters



\$425,215
Paid on Tenant's Behalf



\$383
Average Housing Assistance Payment

RHA Families Served



Number of Family Members
2,414



Female Head of Household
964 (39.9%)



Male Head of Household
143 (5.9%)



Children
1,060 (44.0%)



Other Household Members
247 (10.2%)

WORKFORCE DEVELOPMENT

Wendy Johnson
 April Lail
 Elizabeth Hilliard
 Donna Gilbert
 Matthew Xiong

JOBSEEKER SERVICES



12
Scholarships Issued

Job seekers currently receiving training scholarships



13
Trainings

On-the-Job-Training (OJT) & Work Experience



153
New Register Unemployed

People not working that newly registered in NCWorks.gov



294
1x NCWorks Registrants

People that registered in NCWorks.gov for the first time

EMPLOYER SERVICES



368
Employers served at NCWorks Career Center



14
Staff assisted Recruitment Events at a Career Center or Employer Site



1,584
Job openings in Alexander, Burke, Caldwell & Catawba Counties

Learn more at www.westernpiedmontworks.org