

*The following supplemental maps were created by GHMPO Staff to provide additional information related to Title VI Communities in our region. The maps below illustrate the same data from each of the five Title VI Communities presented in the Title VI Chapter for the 2050 Metropolitan Transportation Plan, but on a county level. Additionally, highway projects are included as an overlying layer for each county and Title VI category.*

*Staff created five maps for each of the four counties in our region for a total of twenty supplemental visual aids. The purpose of these small-scale maps is to provide more resources to both planners and the general public, to positively influence the transportation planning process.*

#### Table of Contents:

##### Alexander County:

- Disability Statistics .....2
- Zero Vehicle Availability .....2
- Limited English Proficiency .....3
- Persons Aged 65 & Older .....3
- Single Parent Households .....4

##### Burke County:

- Disability Statistics .....5
- Zero Vehicle Availability .....5
- Limited English Proficiency .....6
- Persons Aged 65 & Older .....6
- Single Parent Households .....7

##### Caldwell County:

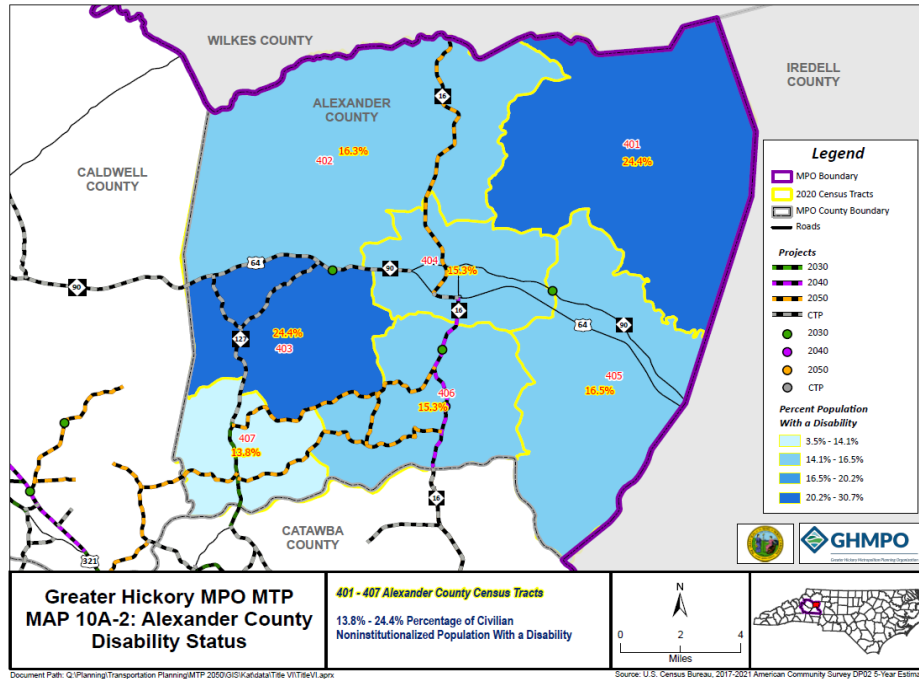
- Disability Statistics .....8
- Zero Vehicle Availability .....8
- Limited English Proficiency .....9
- Persons Aged 65 & Older .....9
- Single Parent Households .....10

##### Catawba County:

- Disability Statistics .....11
- Zero Vehicle Availability .....11
- Limited English Proficiency .....12
- Persons Aged 65 & Older .....12
- Single Parent Households .....13

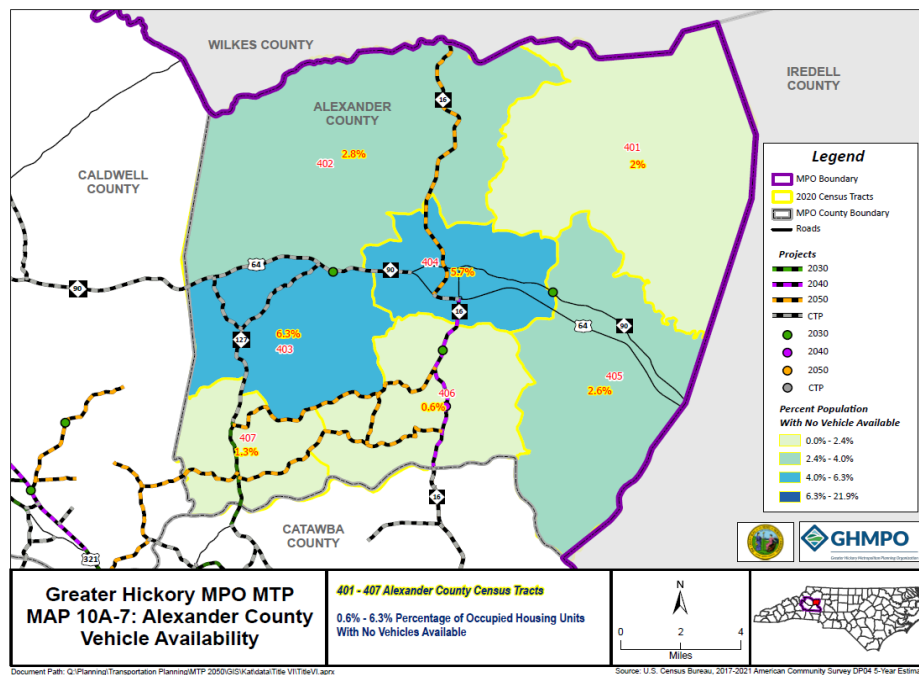
## Alexander County

Map: 10A\_2: Disability Status in Alexander County



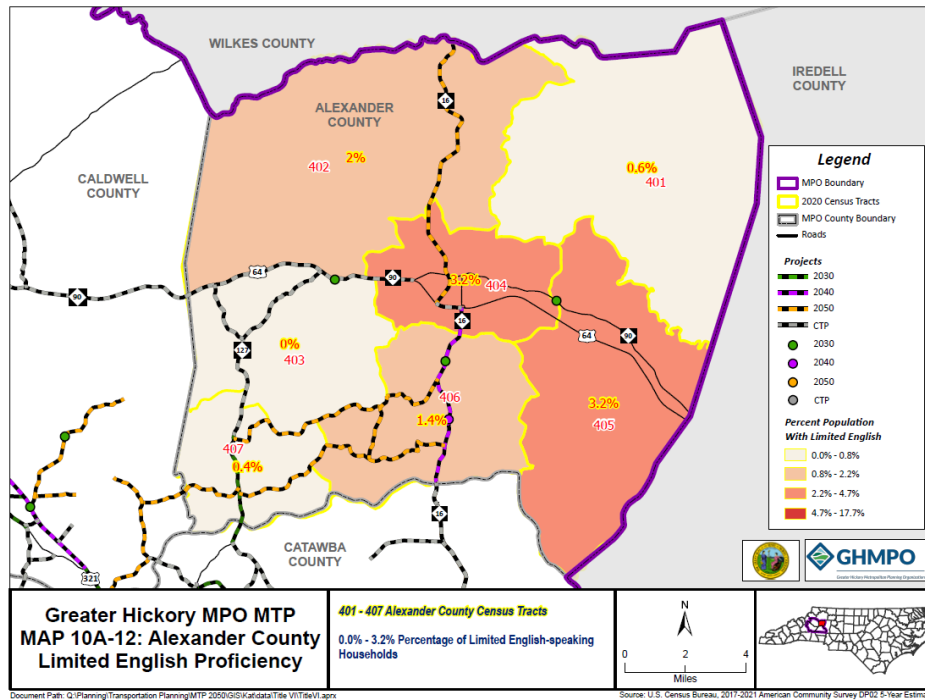
**\*Map :** Illustrates population percentages of those classified as non-institutionalized with a disability. The highest percentage concentrations are found in Census Tracts 401 & 403, ranging from 20.2% & 30.7%. \*

Map: 10A\_7: Zero Vehicle Availability in Alexander County



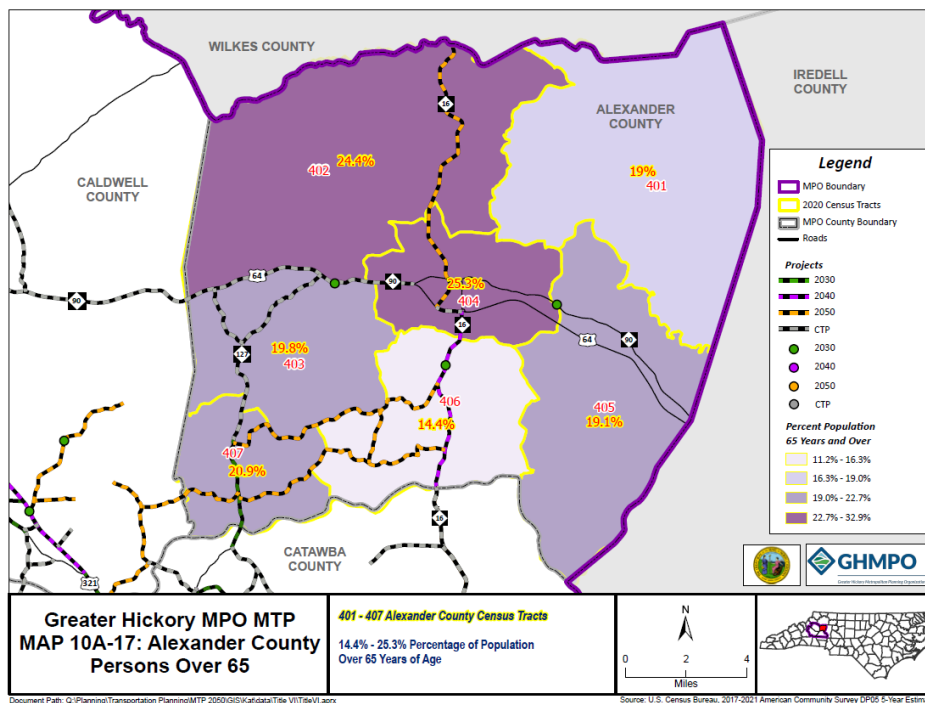
**\*Map :** Illustrates population percentages of those with Zero Vehicle Availability in Alexander County. The highest percentage concentrations are found in Census Tracts 401 & 404, ranging from 6.3% - 21.9%. \*

Map: 10A\_12: Limited English Proficiency in Alexander County

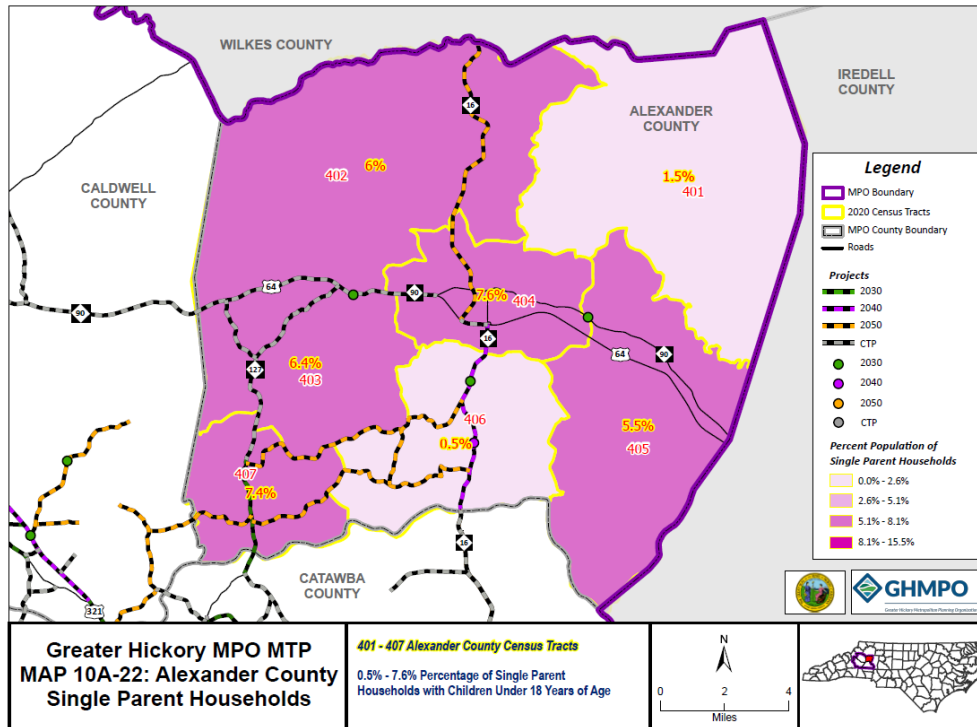


**\*Map:** : Illustrates population percentages of those with Limited English Proficiency in Alexander County. Census Tracts 404 & 405 contain the highest population percentages, ranging from 2.2% - 4.7%.\*

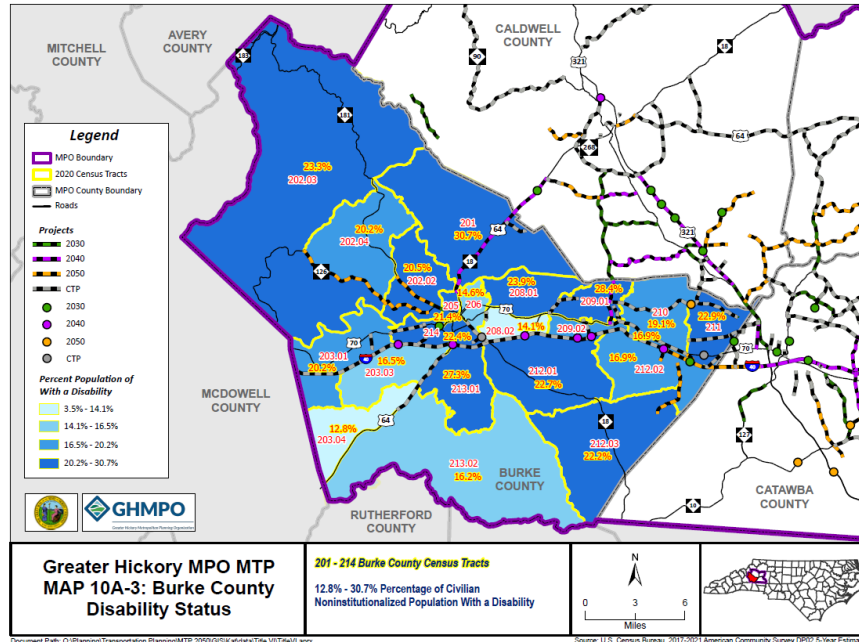
Map: 10A-17: Persons Aged 65 &amp; Older in Alexander County



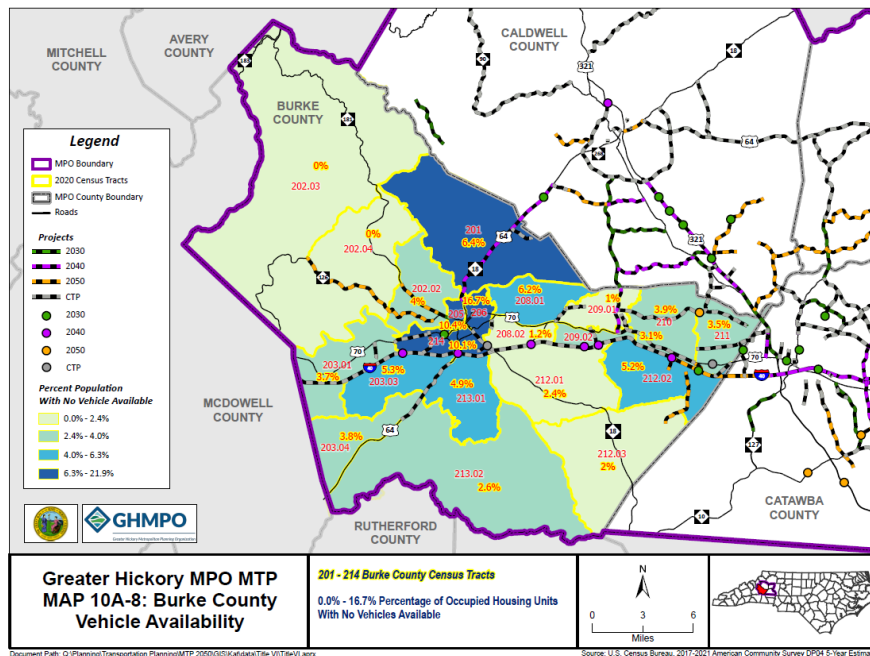
**\*Map:** : Illustrates population percentages of Persons Aged 65 & Older. In Alexander County, Persons Aged 65 & Older comprise of at least 16.3% of the population in all Census Tracts, apart from Census Tract 406, ranging from 11.2% - 16.3%. \*

**Map: 10A-22: Single Parent Households in Alexander County**

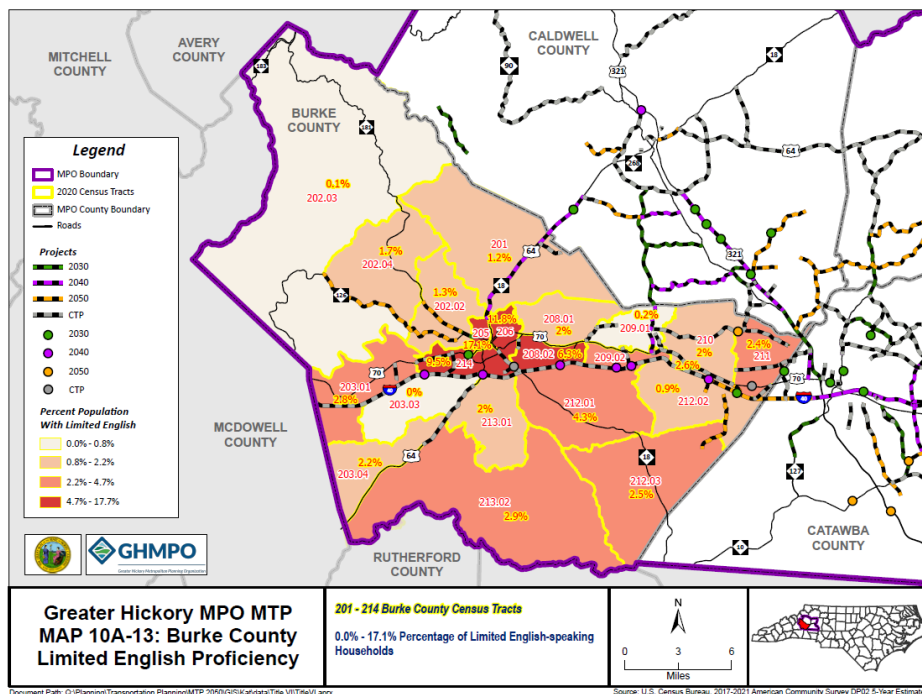
**\*Map :** Illustrates population percentages of Single Parent Households in Alexander County. The majority of Census Tracts comprise of Single Parent Household percentages ranging from 5.1% - 8.1%. \*

**Burke County****Map: 10A-3: Disability Status in Burke County**

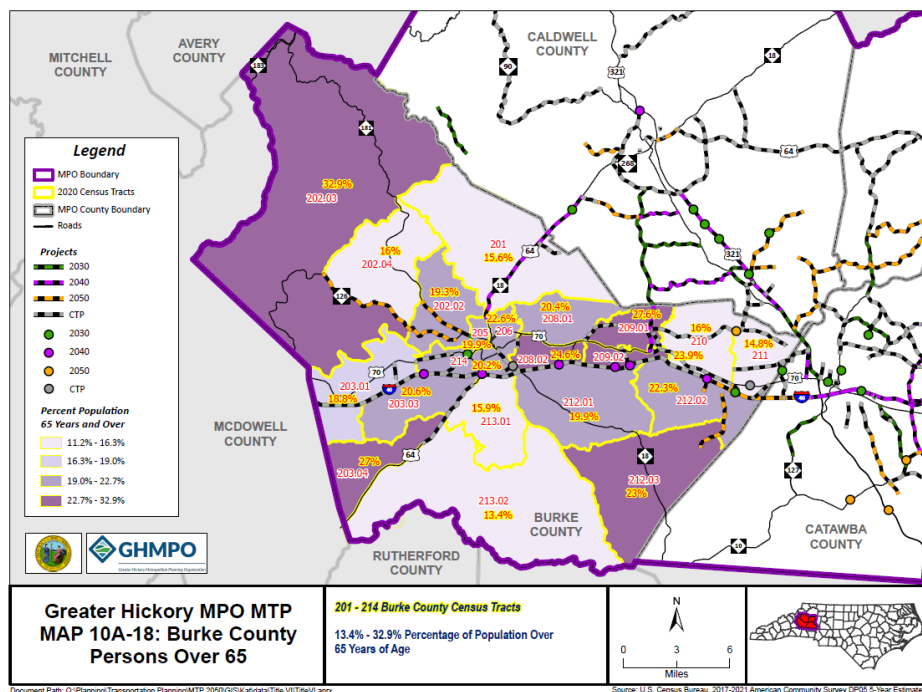
**\*Map:** : Illustrates population percentages of Disability Status in Burke County. Results indicate Disability Status population percentages range from 20.2% - 30.7% in over half of the Census Tracts in Burke County. \*

**Map: 10A-8: Zero Vehicle Availability in Burke County**

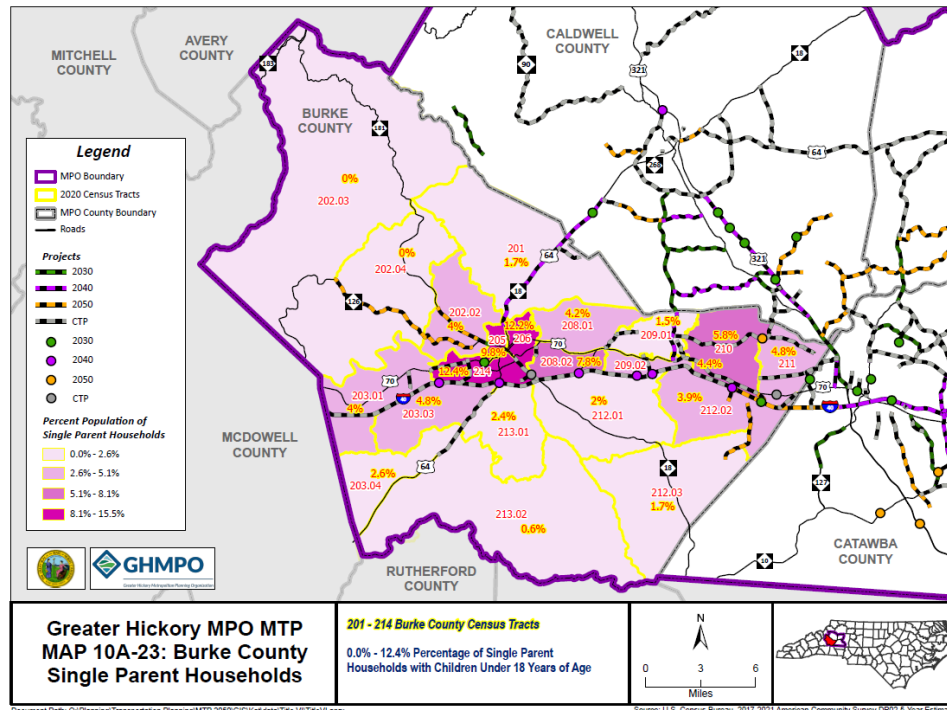
**\*Map:** : Illustrates Census Tract population percentages with Zero Vehicle Availability. In Burke County, higher percentages are found within the City of Morganton and north. Percentages within these Census Tracts range from 6.3% - 21.9%. \*

**Map: 10A-13: Limited English Proficiency in Burke County**

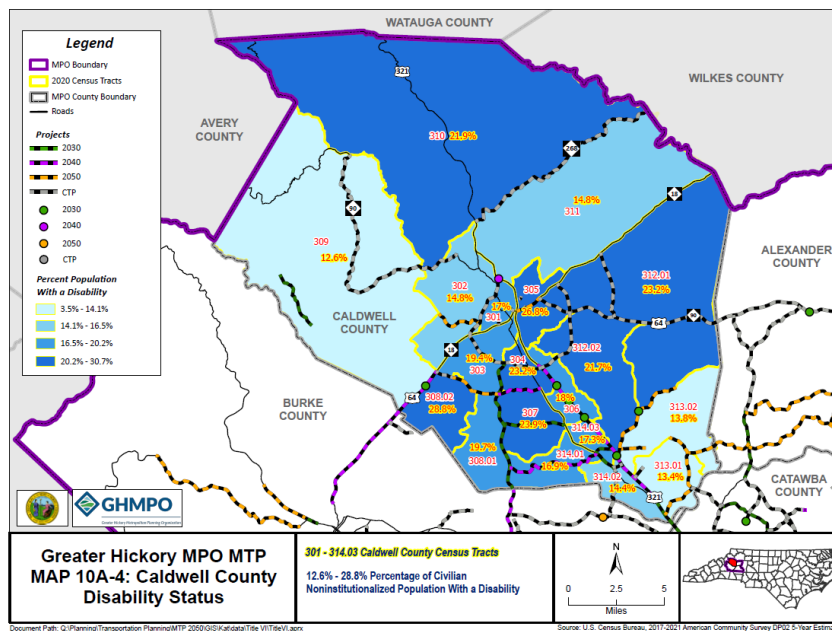
**\*Map:** : Illustrates Census Tract population percentages with Limited English Proficiency In Burke County. Higher population percentages, ranging from 4.7% - 17.7% are located within the Census Tracts in the City of Morganton. \*

**Map: 10A-18: Persons Aged 65 & Over in Burke County**

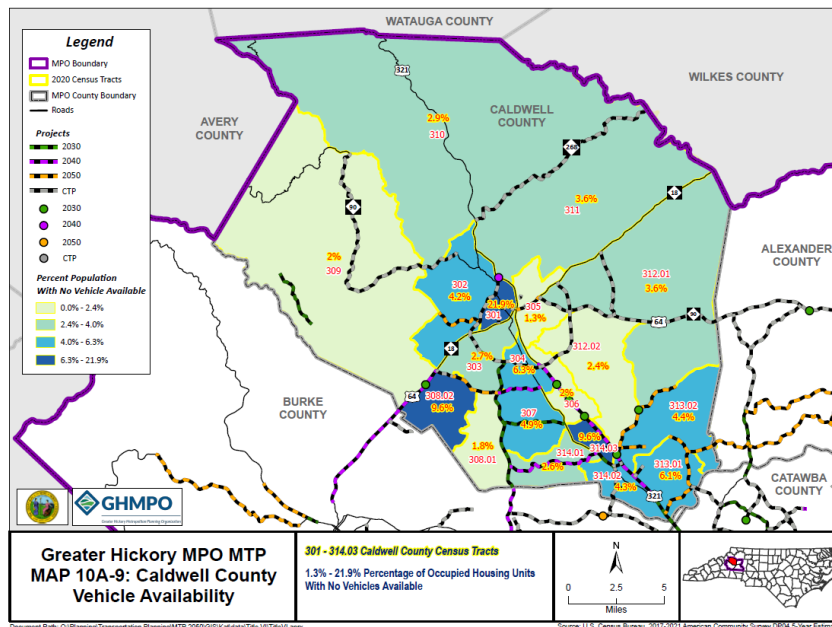
**\*Map:** : Illustrates Census Tract population percentages of Persons Aged 65 & Older in Burke County. Census Tract population percentages, ranging from 11.2% - 32.9%, vary in their distribution throughout the county. \*

**Map: 10A-23: Single Parent Households in Burke County**

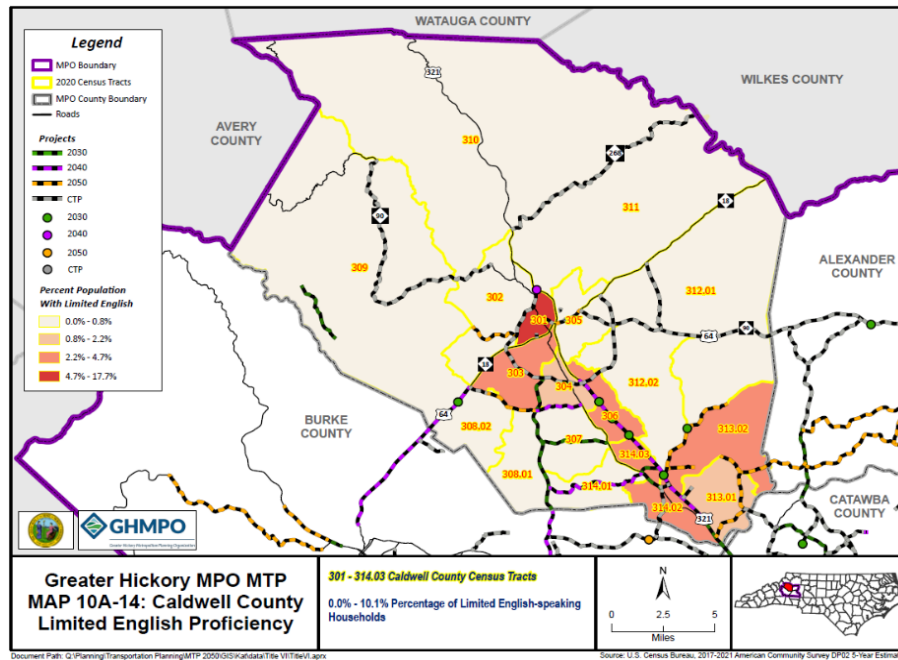
**\*Map:** : Illustrates Census Tract population percentages of Single Parent Households in Burke County. Higher concentrations of Single Parent Households are found within the City of Morganton. Population percentages in this area range from 8.1% - 15.5%. \*

**Map: 10A-4: Disability Status in Caldwell County**

**\*Map:** : Illustrates population percentages of Disability Status in Caldwell County. Higher concentrations of Disability Status can be found in Census Tracts containing the City of Lenoir and to the South and East. Percentages in these Census Tracts range from 16.5% - 30.7%.\*

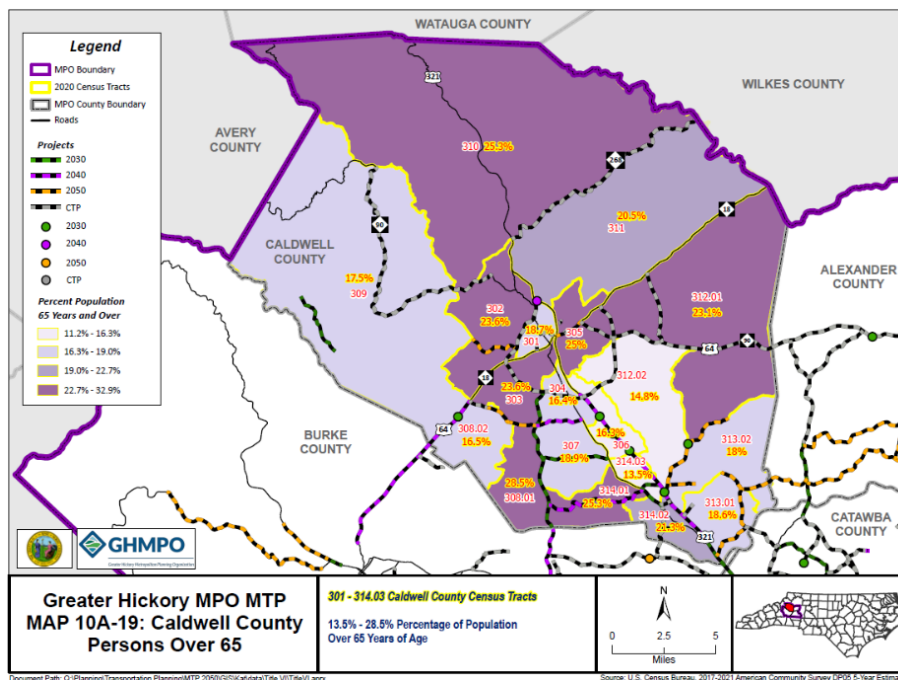
**Map: 10A-9: Zero Vehicle Availability in Caldwell County**

**\*Map:** : Illustrates Census Tract population percentages with Zero Vehicle Availability in Caldwell County. Higher concentrations are primarily located in Census Tracts along US-321 and North towards the City of Lenoir. Percentages in these Census Tracts range from 4.0% - 21.9%.\*

**Map: 10A-14: Limited English Proficiency in Caldwell County**

**\*Map :** Illustrates Census Tract population percentages of those with Limited English Proficiency in Caldwell County. Census Tract 301, covering the City of Lenoir, has the highest concentration with a range of 4.7% - 17.7%.

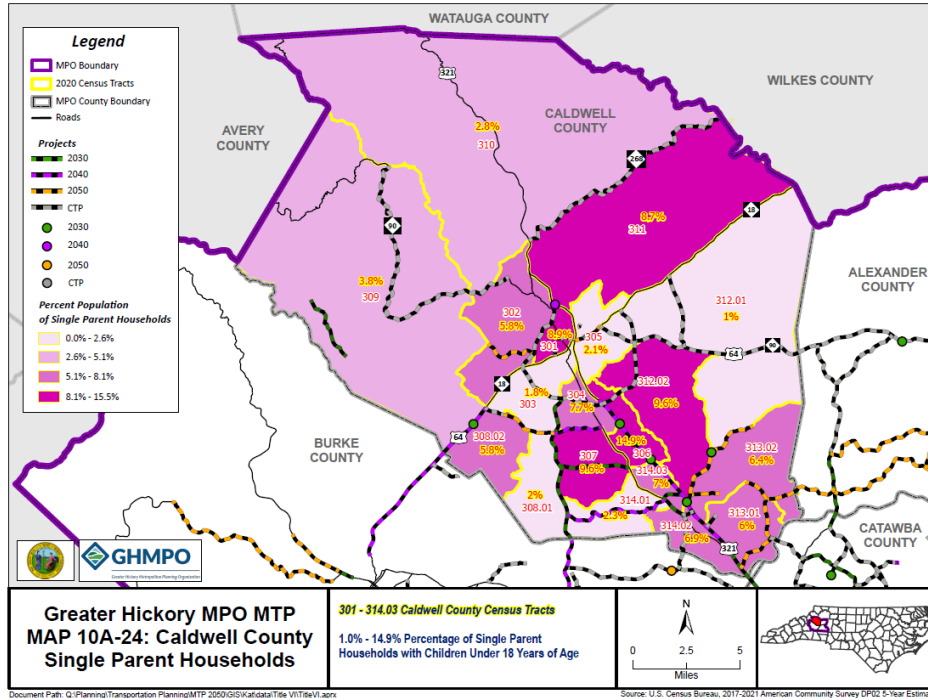
\*

**Map: 10A-19: Persons Aged 65 & Older in Caldwell County**

**\*Map :** Illustrates Census Tract population percentages of those aged 65 & Older in Caldwell County. Several Census Tracts surrounding the City of Lenoir have a range of 22.7% - 32.9%. Additionally, Census Tracts with higher concentrations of the same range can be found in the North and Northeastern portions of the county.

\*

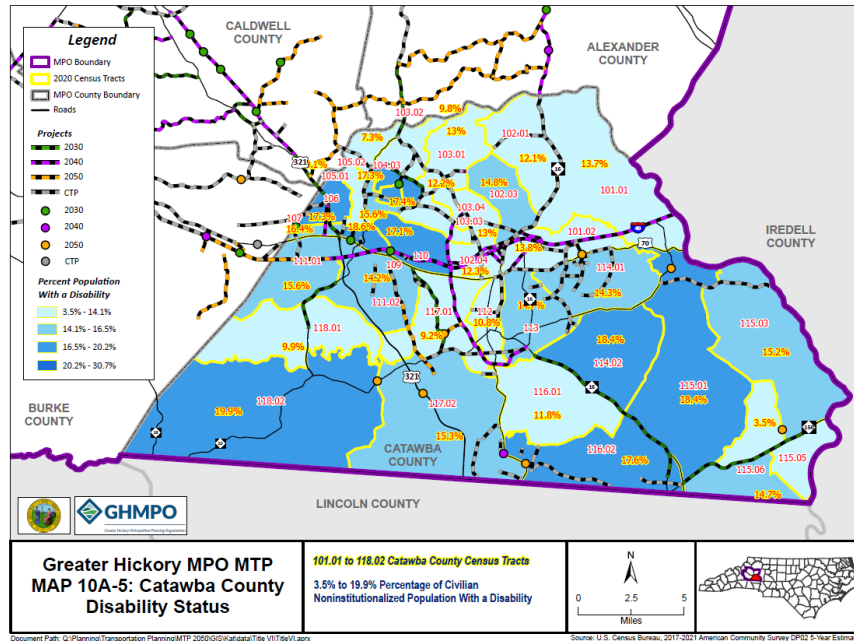
**Map: 10A-24: Single Parent Households in Caldwell County**



**\*Map:** : Illustrates Census Tract population percentages of Single Parent Households in Caldwell County. Several Census Tracts along US-321 contain higher percentages ranging from 5.1% - 15.5%. \*

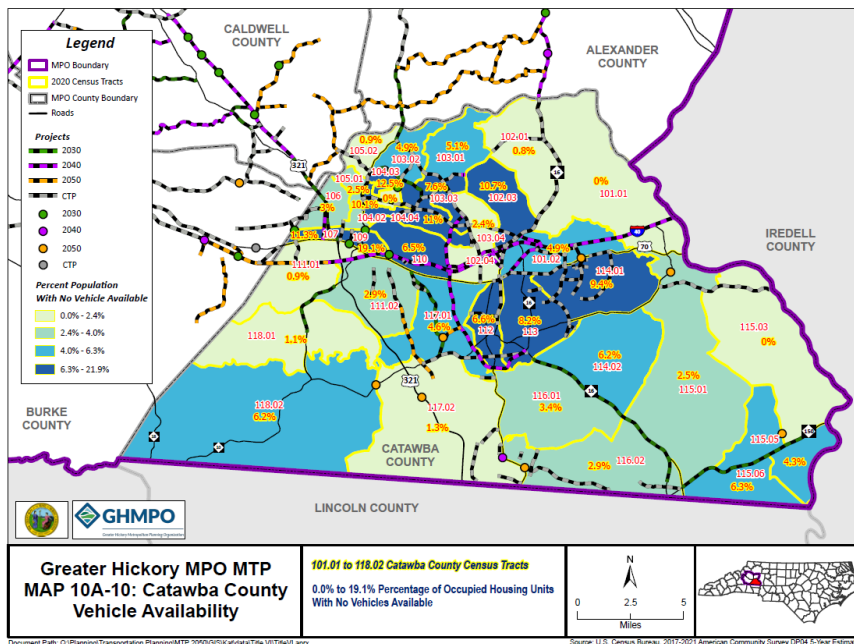
## Catawba County

**Map: 10A-5: Disability Status in Catawba County**

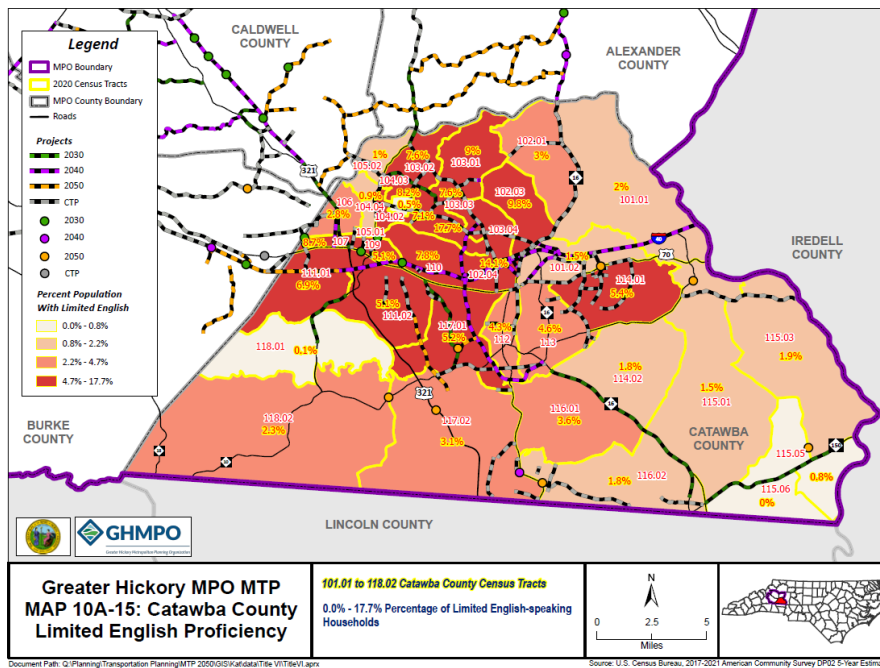


**\*Map:** : Illustrates Census Tract population percentages of Disability Status in Catawba County. Higher concentrations vary, but can be found in the vicinity of the City of Hickory. In Hickory, percentages range from 16.5% - 20.2%. \*

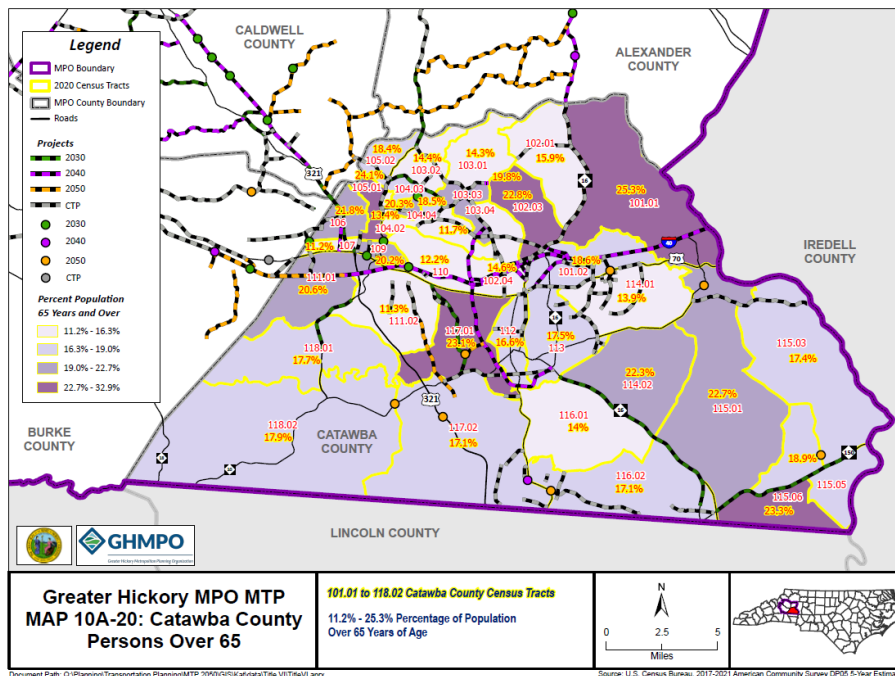
**Map: 10A-10: Zero Vehicle Availability in Catawba County**



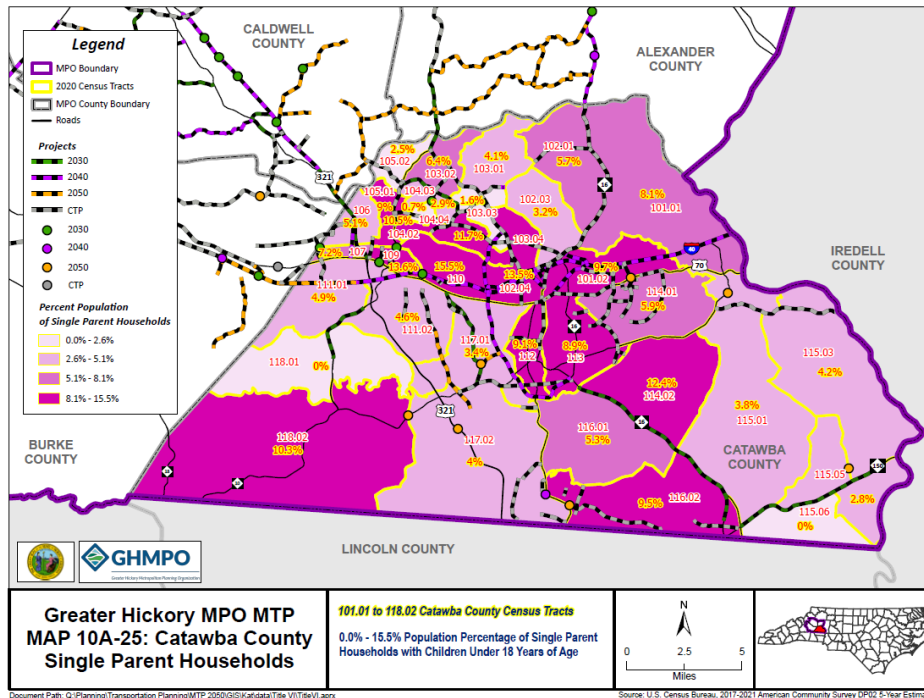
**\*Map:** : Illustrates Census Tract population percentages of Disability Status in Catawba County. Higher concentrations vary but can be found in the vicinity of the City of Hickory. In Hickory, percentages range from 16.5% - 20.2%. \*

**Map: 10A-15: Limited English Proficiency in Catawba County**

**\*Map:** : Illustrates Census Tract population percentages of Limited English Proficiency in Catawba County. Higher concentrations of Limited English Proficiency are found in Census Tracts within the City of Hickory. These Census Tracts have range of 4.7% - 17.7%. \*

**Map: 10A-20: Persons Aged 65 & Older in Catawba County**

**\*Map:** : Illustrates Census Tract population percentages of Persons Aged 65 & Older in Catawba County. Census Tracts with higher concentrations vary in distribution throughout the county\*

**Map: 10A-25: Single Parent Households in Catawba County**

**\*Map:** : Illustrates Census Tract population percentages of Single Parent Households in Catawba County. Many Census Tracts with higher concentrations of Single Parent Households can be found in the Cities of Hickory, Newton, and Conover. \*