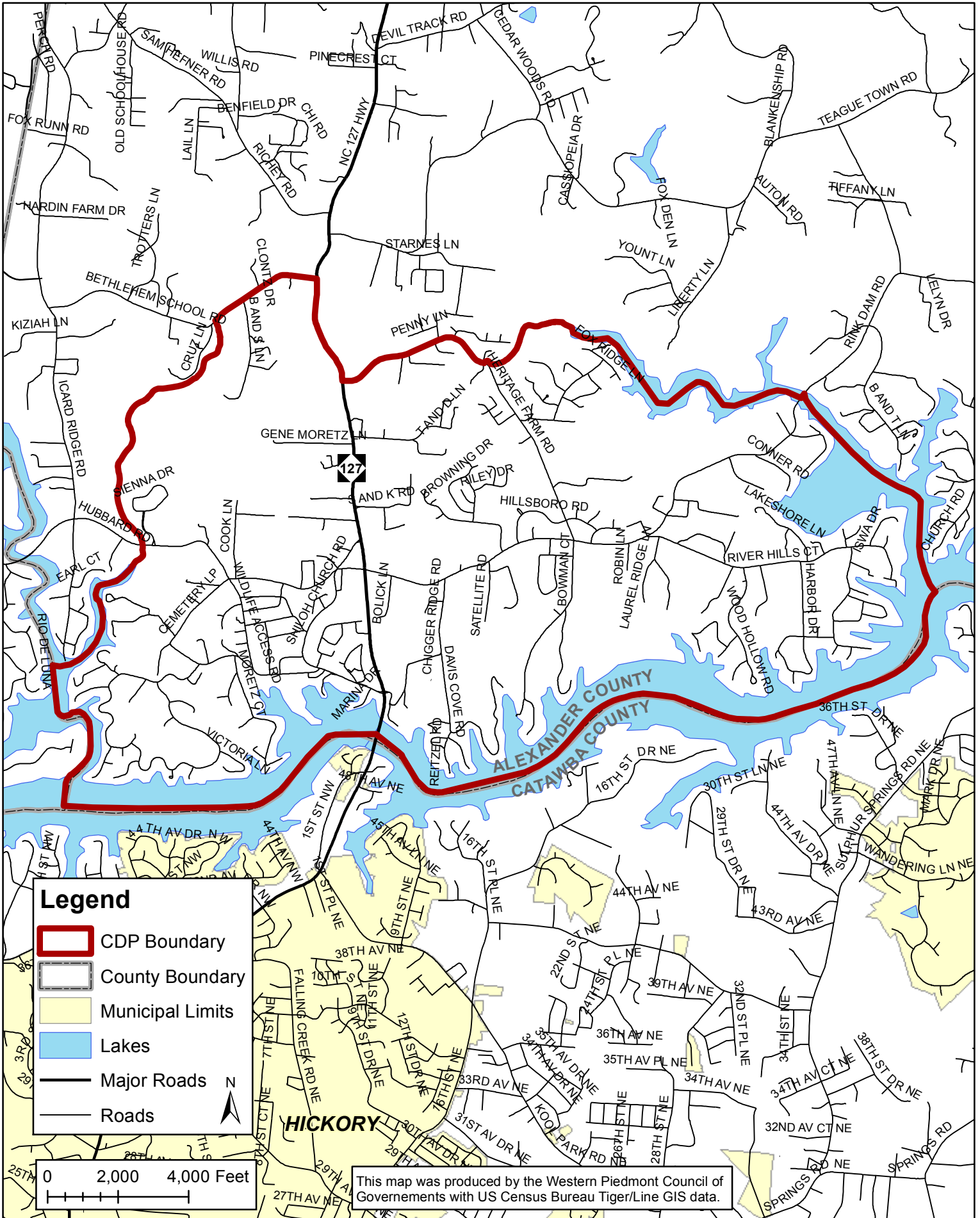


Bethlehem Census Designated Place (CDP)



SELECTED SOCIAL CHARACTERISTICS IN THE UNITED STATES		United States [®] Census Bureau
Note: The table shown may have been modified by user selections. Some information may be missing.		
DATA NOTES		
TABLE ID:	DP02	
SURVEY/PROGRAM:	American Community Survey	
VINTAGE:	2021	
DATASET:	ACSDP5Y2021	
PRODUCT:	ACS 5-Year Estimates Data Profiles	
UNIVERSE:	None	
FTP URL:	None	
API URL:	https://api.census.gov/data/2021/acs/acs5/profile	
USER SELECTIONS		
TABLES	DP02	
GEOS	Bethlehem CDP, North Carolina	
EXCLUDED COLUMNS		
	None	
APPLIED FILTERS		
	None	
APPLIED SORTS		
	None	
PIVOT & GROUPING		
PIVOT COLUMNS	None	
PIVOT MODE	Off	
ROW GROUPS	None	
VALUE COLUMNS	None	
WEB ADDRESS		
	https://data.census.gov/table?q=dp02&g=1600000US3705530&tid=ACSDP5Y2021.DP02	
TABLE NOTES		
	Although the American Community Survey (ACS) produces population, demographic and housing unit estimates, it is the Census Bureau's Population Estimates Program that produces and disseminates the official estimates of the population for the nation, states, counties, cities, and towns and estimates of housing units for states and counties.	
	Supporting documentation on code lists, subject definitions, data accuracy, and statistical testing can be found on the American Community Survey website in the Technical Documentation section.	
	Sample size and data quality measures (including coverage rates, allocation rates, and response rates) can be found on the American Community Survey website in the Methodology section.	
	Source: U.S. Census Bureau, 2017-2021 American Community Survey 5-Year Estimates	
	Data are based on a sample and are subject to sampling variability. The degree of uncertainty for an estimate arising from sampling variability is represented through the use of a margin of error. The value shown here is the 90 percent margin of error. The margin of error can be interpreted roughly as providing a 90 percent probability that the interval defined by the estimate minus the margin of error and the estimate plus the margin of error (the lower and upper confidence bounds) contains the true value. In addition to sampling variability, the ACS estimates are subject to nonsampling error (for a discussion of nonsampling variability, see ACS Technical Documentation). The effect of nonsampling error is not represented in these tables.	
	Ancestry listed in this table refers to the total number of people who responded with a particular ancestry; for example, the estimate given for Russian represents the number of people who listed Russian as either their first or second ancestry. This table lists only the largest ancestry groups; see the Detailed Tables for more categories. Race and Hispanic origin groups are not included in this table because official data for those groups come from the Race and Hispanic origin questions rather than the ancestry question (see Demographic Table).	

Table: ACSDP5Y2021.DP02

	Data for year of entry of the native population reflect the year of entry into the U.S. by people who were born in Puerto Rico or U.S. Island Areas or born outside the U.S. to a U.S. citizen parent and who subsequently moved to the U.S.
	Methodological changes to citizenship edits may have affected citizenship data for those born in American Samoa. Users should be aware of these changes when using 2018 data or multi-year data containing data from 2018. For more information, see: American Samoa Citizenship User Note.
	The Census Bureau introduced a new set of disability questions in the 2008 ACS questionnaire. Accordingly, comparisons of disability data from 2008 or later with data from prior years are not recommended. For more information on these questions and their evaluation in the 2006 ACS Content Test, see the Evaluation Report Covering Disability.
	Data about computer and Internet use were collected by asking respondents to select "Yes" or "No" to each type of computer and each type of Internet subscription. Therefore, respondents were able to select more than one type of computer and more than one type of Internet subscription.
	The category "with a broadband Internet subscription" refers to those who said "Yes" to at least one of the following types of Internet subscriptions: Broadband such as cable, fiber optic, or DSL; a cellular data plan; satellite; a fixed wireless subscription; or other non-dial up subscription types.
	An Internet "subscription" refers to a type of service that someone pays for to access the Internet such as a cellular data plan, broadband such as cable, fiber optic or DSL, or other type of service. This will normally refer to a service that someone is billed for directly for Internet alone or sometimes as part of a bundle.
	With a computer includes those who said "Yes" to at least one of the following types of computers: Desktop or laptop; smartphone; tablet or other portable wireless computer; or some other type of computer.
	The "children of the householder" and "own children of the householder" concepts are combined in these estimates. For more information, please the following User Note .
	The 2017-2021 American Community Survey (ACS) data generally reflect the March 2020 Office of Management and Budget (OMB) delineations of metropolitan and micropolitan statistical areas. In certain instances, the names, codes, and boundaries of the principal cities shown in ACS tables may differ from the OMB delineation lists due to differences in the effective dates of the geographic entities.
	Estimates of urban and rural populations, housing units, and characteristics reflect boundaries of urban areas defined based on Census 2010 data. As a result, data for urban and rural areas from the ACS do not necessarily reflect the results of ongoing urbanization.
	Explanation of Symbols:- The estimate could not be computed because there were an insufficient number of sample observations. For a ratio of medians estimate, one or both of the median estimates falls in the lowest interval or highest interval of an open-ended distribution. For a 5-year median estimate, the margin of error associated with a median was larger than the median itself. N The estimate or margin of error cannot be displayed because there were an insufficient number of sample cases in the selected geographic area. (X) The estimate or margin of error is not applicable or not available. median- The median falls in the lowest interval of an open-ended distribution (for example "2,500-") median+ The median falls in the highest interval of an open-ended distribution (for example "250,000+").** The margin of error could not be computed because there were an insufficient number of sample observations.*** The margin of error could not be computed because the median falls in the lowest interval or highest interval of an open-ended distribution.**** A margin of error is not appropriate because the corresponding estimate is controlled to an independent population or housing estimate. Effectively, the corresponding estimate has no sampling error and the margin of error may be treated as zero.
COLUMN NOTES	None

Table: ACSDP5Y2021.DP02

	Bethlehem CDP, North Carolina			
Label	Estimate	Margin of Error	Percent	Percent Margin of
HOUSEHOLDS BY TYPE				
Total households	1,591	±231	1,591	(X)
Married-couple household	883	±156	55.5%	±8.7
With children of the householder under 18 years	190	±84	11.9%	±5.7
Cohabiting couple household	40	±35	2.5%	±2.2
With children of the householder under 18 years	0	±13	0.0%	±2.5
Male householder, no spouse/partner present	335	±160	21.1%	±8.8
With children of the householder under 18 years	77	±93	4.8%	±5.8
Householder living alone	235	±129	14.8%	±7.3
65 years and over	104	±70	6.5%	±4.2
Female householder, no spouse/partner present	333	±129	20.9%	±7.4
With children of the householder under 18 years	62	±84	3.9%	±5.1
Householder living alone	205	±80	12.9%	±5.1
65 years and over	68	±43	4.3%	±2.7
Households with one or more people under 18 years	329	±129	20.7%	±7.7
Households with one or more people 65 years and over	563	±127	35.4%	±6.5
Average household size	2.26	±0.24	(X)	(X)
Average family size	2.76	±0.27	(X)	(X)
RELATIONSHIP				
Population in households	3,593	±604	3,593	(X)
Householder	1,591	±231	44.3%	±4.8
Spouse	933	±175	26.0%	±3.8
Unmarried partner	58	±46	1.6%	±1.2
Child	819	±262	22.8%	±4.8
Other relatives	174	±144	4.8%	±3.6
Other nonrelatives	18	±31	0.5%	±0.9
MARITAL STATUS				
Males 15 years and over	1,693	±304	1,693	(X)
Never married	358	±149	21.1%	±6.8
Now married, except separated	986	±196	58.2%	±9.9
Separated	38	±64	2.2%	±3.7
Widowed	127	±77	7.5%	±4.2
Divorced	184	±109	10.9%	±6.0

Table: ACSDP5Y2021.DP02

	Bethlehem CDP, North Carolina			
Label	Estimate	Margin of Error	Percent	Percent Margin of
Females 15 years and over	1,530	±292	1,530	(X)
Never married	321	±127	21.0%	±6.7
Now married, except separated	866	±179	56.6%	±8.7
Separated	31	±39	2.0%	±2.7
Widowed	206	±112	13.5%	±6.7
Divorced	106	±93	6.9%	±5.6
FERTILITY				
Number of women 15 to 50 years old who had a birth in the past 12 months	0	±13	0	(X)
Unmarried women (widowed, divorced, and never married)	0	±13	-	**
Per 1,000 unmarried women	0	±108	(X)	(X)
Per 1,000 women 15 to 50 years old	0	±57	(X)	(X)
Per 1,000 women 15 to 19 years old	0	±263	(X)	(X)
Per 1,000 women 20 to 34 years old	0	±177	(X)	(X)
Per 1,000 women 35 to 50 years old	0	±107	(X)	(X)
GRANDPARENTS				
Number of grandparents living with own grandchildren under 18 years	0	±13	0	(X)
Grandparents responsible for grandchildren	0	±13	-	**
Years responsible for grandchildren				
Less than 1 year	0	±13	-	**
1 or 2 years	0	±13	-	**
3 or 4 years	0	±13	-	**
5 or more years	0	±13	-	**
Number of grandparents responsible for own grandchildren under 18 years	0	±13	0	(X)
Who are female	0	±13	-	**
Who are married	0	±13	-	**
SCHOOL ENROLLMENT				

Table: ACSDP5Y2021.DP02

	Bethlehem CDP, North Carolina			
Label	Estimate	Margin of Error	Percent	Percent Margin of
Population 3 years and over enrolled in school	686	±234	686	(X)
Nursery school, preschool	16	±27	2.3%	±3.9
Kindergarten	25	±29	3.6%	±4.3
Elementary school (grades 1-8)	314	±191	45.8%	±19.0
High school (grades 9-12)	212	±127	30.9%	±16.4
College or graduate school	119	±74	17.3%	±11.0
EDUCATIONAL ATTAINMENT				
Population 25 years and over	2,872	±449	2,872	(X)
Less than 9th grade	92	±91	3.2%	±3.0
9th to 12th grade, no diploma	156	±101	5.4%	±3.3
High school graduate (includes equivalency)	759	±220	26.4%	±6.1
Some college, no degree	376	±128	13.1%	±4.5
Associate's degree	497	±177	17.3%	±5.6
Bachelor's degree	718	±271	25.0%	±8.7
Graduate or professional degree	274	±140	9.5%	±4.8
High school graduate or higher	2,624	±394	91.4%	±4.6
Bachelor's degree or higher	992	±291	34.5%	±9.0
VETERAN STATUS				
Civilian population 18 years and over	3,100	±509	3,100	(X)
Civilian veterans	296	±104	9.5%	±3.4
DISABILITY STATUS OF THE CIVILIAN NONINSTITUTIONALIZED POPULATION				
Total Civilian Noninstitutionalized Population	3,593	±604	3,593	(X)
With a disability	539	±201	15.0%	±5.3
Under 18 years	493	±208	493	(X)
With a disability	14	±23	2.8%	±4.7
18 to 64 years	2,198	±440	2,198	(X)
With a disability	221	±143	10.1%	±6.4
65 years and over	902	±197	902	(X)
With a disability	304	±127	33.7%	±10.6
RESIDENCE 1 YEAR AGO				
Population 1 year and over	3,593	±604	3,593	(X)
Same house	3,202	±571	89.1%	±4.7

Table: ACSDP5Y2021.DP02

	Bethlehem CDP, North Carolina			
Label	Estimate	Margin of Error	Percent	Percent Marginof
Different house (in the U.S. or abroad)	391	±181	10.9%	±4.7
Different house in the U.S.	391	±181	10.9%	±4.7
Same county	138	±95	3.8%	±2.7
Different county	253	±147	7.0%	±3.8
Same state	173	±116	4.8%	±3.2
Different state	80	±85	2.2%	±2.2
Abroad	0	±13	0.0%	±1.1
PLACE OF BIRTH				
Total population	3,593	±604	3,593	(X)
Native	3,424	±595	95.3%	±2.8
Born in United States	3,389	±601	94.3%	±3.1
State of residence	2,207	±411	61.4%	±7.6
Different state	1,182	±392	32.9%	±8.0
Born in Puerto Rico, U.S. Island areas, or born abroad to American parent(s)	35	±43	1.0%	±1.2
Foreign born	169	±103	4.7%	±2.8
U.S. CITIZENSHIP STATUS				
Foreign-born population	169	±103	169	(X)
Naturalized U.S. citizen	169	±103	100.0%	±20.9
Not a U.S. citizen	0	±13	0.0%	±20.9
YEAR OF ENTRY				
Population born outside the United States	204	±110	204	(X)
Native	35	±43	35	(X)
Entered 2010 or later	0	±13	0.0%	±55.6
Entered before 2010	35	±43	100.0%	±55.6
Foreign born	169	±103	169	(X)
Entered 2010 or later	0	±13	0.0%	±20.9
Entered before 2010	169	±103	100.0%	±20.9
WORLD REGION OF BIRTH OF FOREIGN BORN				
Foreign-born population, excluding population born at sea	169	±103	169	(X)
Europe	11	±17	6.5%	±10.9
Asia	110	±81	65.1%	±31.8
Africa	0	±13	0.0%	±20.9
Oceania	0	±13	0.0%	±20.9
Latin America	35	±62	20.7%	±31.4
Northern America	13	±22	7.7%	±13.2
LANGUAGE SPOKEN AT HOME				

Table: ACSDP5Y2021.DP02

	Bethlehem CDP, North Carolina			
Label	Estimate	Margin of Error	Percent	Percent Margin of
Population 5 years and over	3,562	±603	3,562	(X)
English only	3,413	±593	95.8%	±3.5
Language other than English	149	±129	4.2%	±3.5
Speak English less than "very well"	0	±13	0.0%	±1.1
Spanish	100	±114	2.8%	±3.2
Speak English less than "very well"	0	±13	0.0%	±1.1
Other Indo-European languages	0	±13	0.0%	±1.1
Speak English less than "very well"	0	±13	0.0%	±1.1
Asian and Pacific Islander languages	49	±70	1.4%	±1.9
Speak English less than "very well"	0	±13	0.0%	±1.1
Other languages	0	±13	0.0%	±1.1
Speak English less than "very well"	0	±13	0.0%	±1.1
ANCESTRY				
Total population	3,593	±604	3,593	(X)
American	619	±286	17.2%	±7.8
Arab	0	±13	0.0%	±1.1
Czech	0	±13	0.0%	±1.1
Danish	0	±13	0.0%	±1.1
Dutch	0	±13	0.0%	±1.1
English	316	±133	8.8%	±3.8
French (except Basque)	22	±25	0.6%	±0.7
French Canadian	11	±18	0.3%	±0.5
German	861	±436	24.0%	±10.4
Greek	0	±13	0.0%	±1.1
Hungarian	0	±13	0.0%	±1.1
Irish	801	±333	22.3%	±7.8
Italian	198	±184	5.5%	±5.0
Lithuanian	0	±13	0.0%	±1.1
Norwegian	0	±13	0.0%	±1.1
Polish	150	±187	4.2%	±4.9
Portuguese	13	±21	0.4%	±0.6
Russian	13	±21	0.4%	±0.6
Scotch-Irish	71	±68	2.0%	±1.8
Scottish	87	±72	2.4%	±2.0
Slovak	16	±25	0.4%	±0.7
Subsaharan African	0	±13	0.0%	±1.1

Table: ACSDP5Y2021.DP02

	Bethlehem CDP, North Carolina			
Label	Estimate	Margin of Error	Percent	Percent Marginof
Swedish	0	±13	0.0%	±1.1
Swiss	0	±13	0.0%	±1.1
Ukrainian	0	±13	0.0%	±1.1
Welsh	13	±23	0.4%	±0.7
West Indian (excluding Hispanic origin groups)	0	±13	0.0%	±1.1
COMPUTERS AND INTERNET USE				
Total households	1,591	±231	1,591	(X)
With a computer	1,521	±228	95.6%	±3.0
With a broadband Internet subscription	1,473	±232	92.6%	±4.0

SELECTED ECONOMIC CHARACTERISTICS

Note: The table shown may have been modified by user selections. Some information may be missing.

DATA NOTES	
TABLE ID:	DP03
SURVEY/PROGRAM:	American Community Survey
VINTAGE:	2021
DATASET:	ACSDP5Y2021
PRODUCT:	ACS 5-Year Estimates Data Profiles
UNIVERSE:	None
FTP URL:	None
API URL:	https://api.census.gov/data/2021/acs/acs5/profile
USER SELECTIONS	
TABLES	DP03
GEOS	Bethlehem CDP, North Carolina
EXCLUDED COLUMNS	
	None
APPLIED FILTERS	
	None
APPLIED SORTS	
	None
PIVOT & GROUPING	
PIVOT COLUMNS	None
PIVOT MODE	Off
ROW GROUPS	None
VALUE COLUMNS	None
WEB ADDRESS	
	https://data.census.gov/table?q=dp03&g=1600000US3705530&tid=ACSDP5Y2021.DP03
TABLE NOTES	
	Although the American Community Survey (ACS) produces population, demographic and housing unit estimates, it is the Census Bureau's Population Estimates Program that produces and disseminates the official estimates of the population for the nation, states, counties, cities, and towns and estimates of housing units for states and counties.
	Supporting documentation on code lists, subject definitions, data accuracy, and statistical testing can be found on the American Community Survey website in the Technical Documentation section.
	Sample size and data quality measures (including coverage rates, allocation rates, and response rates) can be found on the American Community Survey website in the Methodology section.
	Source: U.S. Census Bureau, 2017-2021 American Community Survey 5-Year Estimates
	Data are based on a sample and are subject to sampling variability. The degree of uncertainty for an estimate arising from sampling variability is represented through the use of a margin of error. The value shown here is the 90 percent margin of error. The margin of error can be interpreted roughly as providing a 90 percent probability that the interval defined by the estimate minus the margin of error and the estimate plus the margin of error (the lower and upper confidence bounds) contains the true value. In addition to sampling variability, the ACS estimates are subject to nonsampling error (for a discussion of nonsampling variability, see ACS Technical Documentation). The effect of nonsampling error is not represented in these tables.
	Employment and unemployment estimates may vary from the official labor force data released by the Bureau of Labor Statistics because of differences in survey design and data collection. For guidance on differences in employment and unemployment estimates from different sources go to Labor Force Guidance.
	Workers include members of the Armed Forces and civilians who were at work last week.

	<p>Industry titles and their 4-digit codes are based on the North American Industry Classification System (NAICS). The Census industry codes for 2018 and later years are based on the 2017 revision of the NAICS. To allow for the creation of multiyear tables, industry data in the multiyear files (prior to data year 2018) were recoded to the 2017 Census industry codes. We recommend using caution when comparing data coded using 2017 Census industry codes with data coded using Census industry codes prior to data year 2018. For more information on the Census industry code changes, please visit our website at https://www.census.gov/topics/employment/industry-occupation/guidance/code-lists.html.</p>
	<p>Logical coverage edits applying a rules-based assignment of Medicaid, Medicare and military health coverage were added as of 2009 -- please see https://www.census.gov/library/working-papers/2010/demo/coverage_edits_final.html for more details. Select geographies of 2008 data comparable to the 2009 and later tables are available at https://www.census.gov/data/tables/time-series/acs/1-year-re-run-health-insurance.html. The health insurance coverage category names were modified in 2010. See https://www.census.gov/topics/health/health-insurance/about/glossary.html#par_textimage_18 for a list of the insurance type definitions.</p>
	<p>Beginning in 2017, selected variable categories were updated, including age-categories, income-to-poverty ratio (IPR) categories, and the age universe for certain employment and education variables. See user note entitled "Health Insurance Table Updates" for further details.</p>
	<p>Several means of transportation to work categories were updated in 2019. For more information, see: Change to Means of Transportation.</p>
	<p>Between 2018 and 2019 the American Community Survey retirement income question changed. These changes resulted in an increase in both the number of households reporting retirement income and higher aggregate retirement income at the national level. For more information see Changes to the Retirement Income Question .</p>
	<p>The categories for relationship to householder were revised in 2019. For more information see Revisions to the Relationship to Household item.</p>
	<p>Occupation titles and their 4-digit codes are based on the Standard Occupational Classification (SOC). The Census occupation codes for 2018 and later years are based on the 2018 revision of the SOC. To allow for the creation of the multiyear tables, occupation data in the multiyear files (prior to data year 2018) were recoded to the 2018 Census occupation codes. We recommend using caution when comparing data coded using 2018 Census occupation codes with data coded using Census occupation codes prior to data year 2018. For more information on the Census occupation code changes, please visit our website at https://www.census.gov/topics/employment /industry-occupation/guidance/code-lists.html.</p>
	<p>In 2019, methodological changes were made to the class of worker question. These changes involved modifications to the question wording, the category wording, and the visual format of the categories on the questionnaire. The format for the class of worker categories are now listed under the headings "Private Sector Employee," "Government Employee," and "Self-Employed or Other." Additionally, the category of Active Duty was added as one of the response categories under the "Government Employee" section for the mail questionnaire. For more detailed information about the 2019 changes, see the 2016 American Community Survey Content Test Report for Class of Worker located at http://www.census.gov/library/working-papers/2017/acs/2017_Martinez_01.html.</p>
	<p>Beginning in data year 2019, respondents to the Weeks Worked question provided an integer value for the number of weeks worked. For data years 2008 through 2018, respondents selected a category corresponding to the number of weeks worked.</p>
	<p>The 2017-2021 American Community Survey (ACS) data generally reflect the March 2020 Office of Management and Budget (OMB) delineations of metropolitan and micropolitan statistical areas. In certain instances, the names, codes, and boundaries of the principal cities shown in ACS tables may differ from the OMB delineation lists due to differences in the effective dates of the geographic entities.</p>
	<p>Estimates of urban and rural populations, housing units, and characteristics reflect boundaries of urban areas defined based on Census 2010 data. As a result, data for urban and rural areas from the ACS do not necessarily reflect the results of ongoing urbanization.</p>
	<p>Explanation of Symbols:- The estimate could not be computed because there were an insufficient number of sample observations. For a ratio of medians estimate, one or both of the median estimates falls in the lowest interval or highest interval of an open-ended distribution. For a 5-year median estimate, the margin of error associated with a median was larger than the median itself. N The estimate or margin of error cannot be displayed because there were an insufficient number of sample cases in the selected geographic area. (X) The estimate or margin of error is not applicable or not available. median- The median falls in the lowest interval of an open-ended distribution (for example "2,500-")median+ The median falls in the highest interval of an open-ended distribution (for example "250,000+").** The margin of error could not be computed because there were an insufficient number of sample observations.*** The margin of error could not be computed because the median falls in the lowest interval or highest interval of an open-ended distribution. **** A margin of error is not appropriate because the corresponding estimate is controlled to an independent population or housing estimate. Effectively, the corresponding estimate has no sampling error and the margin of error may be treated as zero.</p>

Table: ACSDP5Y2021.DP03

	Bethlehem CDP, North Carolina			
Label	Estimate	Margin of Error	Percent	Percent Margin of
EMPLOYMENT STATUS				
Population 16 years and over	3,205	±515	3,205	(X)
In labor force	1,822	±325	56.8%	±6.5
Civilian labor force	1,822	±325	56.8%	±6.5
Employed	1,747	±307	54.5%	±6.9
Unemployed	75	±78	2.3%	±2.4
Armed Forces	0	±13	0.0%	±1.2
Not in labor force	1,383	±334	43.2%	±6.5
Civilian labor force	1,822	±325	1,822	(X)
Unemployment Rate	(X)	(X)	4.1%	±4.1
Females 16 years and over	1,512	±289	1,512	(X)
In labor force	797	±170	52.7%	±9.9
Civilian labor force	797	±170	52.7%	±9.9
Employed	797	±170	52.7%	±9.9
Own children of the householder under 6 years	43	±33	43	(X)
All parents in family in labor force	43	±33	100.0%	±50.2
Own children of the householder 6 to 17 years	450	±207	450	(X)
All parents in family in labor force	436	±205	96.9%	±5.2
COMMUTING TO WORK				
Workers 16 years and over	1,720	±307	1,720	(X)
Car, truck, or van -- drove alone	1,507	±292	87.6%	±7.0
Car, truck, or van -- carpoled	84	±79	4.9%	±4.4
Public transportation (excluding taxicab)	0	±13	0.0%	±2.3
Walked	0	±13	0.0%	±2.3
Other means	53	±59	3.1%	±3.4
Worked from home	76	±66	4.4%	±3.9
Mean travel time to work (minutes)	28.5	±5.6	(X)	(X)
OCCUPATION				
Civilian employed population 16 years and over	1,747	±307	1,747	(X)
Management, business, science, and arts occupations	964	±227	55.2%	±10.2
Service occupations	187	±110	10.7%	±5.8
Sales and office occupations	274	±138	15.7%	±7.8

Table: ACSDP5Y2021.DP03

	Bethlehem CDP, North Carolina			
Label	Estimate	Margin of Error	Percent	Percent Margin of
Natural resources, construction, and maintenance occupations	77	±65	4.4%	±3.6
Production, transportation, and material moving occupations	245	±146	14.0%	±7.5
INDUSTRY				
Civilian employed population 16 years and over	1,747	±307	1,747	(X)
Agriculture, forestry, fishing and hunting, and mining	0	±13	0.0%	±2.3
Construction	97	±70	5.6%	±4.0
Manufacturing	336	±139	19.2%	±7.3
Wholesale trade	56	±51	3.2%	±2.9
Retail trade	178	±132	10.2%	±7.4
Transportation and warehousing, and utilities	84	±93	4.8%	±5.0
Information	39	±47	2.2%	±2.6
Finance and insurance, and real estate and rental and leasing	60	±56	3.4%	±3.1
Professional, scientific, and management, and administrative and waste management services	133	±102	7.6%	±5.7
Educational services, and health care and social assistance	444	±168	25.4%	±8.1
Arts, entertainment, and recreation, and accommodation and food services	220	±115	12.6%	±6.4
Other services, except public administration	66	±69	3.8%	±3.7
Public administration	34	±40	1.9%	±2.3
CLASS OF WORKER				
Civilian employed population 16 years and over	1,747	±307	1,747	(X)
Private wage and salary workers	1,357	±264	77.7%	±6.5
Government workers	222	±96	12.7%	±5.2

Table: ACSDP5Y2021.DP03

	Bethlehem CDP, North Carolina			
Label	Estimate	Margin of Error	Percent	Percent Margin of
Self-employed in own not incorporated business workers	168	±95	9.6%	±5.0
Unpaid family workers	0	±13	0.0%	±2.3
INCOME AND BENEFITS (IN 2021 INFLATION-ADJUSTED DOLLARS)				
Total households	1,591	±231	1,591	(X)
Less than \$10,000	56	±41	3.5%	±2.6
\$10,000 to \$14,999	22	±27	1.4%	±1.7
\$15,000 to \$24,999	135	±101	8.5%	±5.9
\$25,000 to \$34,999	93	±57	5.8%	±3.4
\$35,000 to \$49,999	130	±73	8.2%	±4.7
\$50,000 to \$74,999	373	±136	23.4%	±7.0
\$75,000 to \$99,999	184	±76	11.6%	±4.7
\$100,000 to \$149,999	278	±128	17.5%	±7.8
\$150,000 to \$199,999	145	±84	9.1%	±5.4
\$200,000 or more	175	±116	11.0%	±7.3
Median household income (dollars)	71,375	±16,108	(X)	(X)
Mean household income (dollars)	105,510	±26,436	(X)	(X)
With earnings	1,179	±205	74.1%	±7.7
Mean earnings (dollars)	109,329	±33,018	(X)	(X)
With Social Security	613	±161	38.5%	±8.6
Mean Social Security income (dollars)	26,644	±3,895	(X)	(X)
With retirement income	422	±152	26.5%	±8.3
Mean retirement income (dollars)	23,099	±9,232	(X)	(X)
With Supplemental Security Income	76	±62	4.8%	±3.8
Mean Supplemental Security Income (dollars)	9,062	±2,607	(X)	(X)
With cash public assistance income	52	±58	3.3%	±3.6
Mean cash public assistance income (dollars)	N	N	(X)	(X)
With Food Stamp/SNAP benefits in the past 12 months	77	±63	4.8%	±3.9
Families	1,097	±196	1,097	(X)
Less than \$10,000	29	±34	2.6%	±3.1
\$10,000 to \$14,999	0	±13	0.0%	±3.6

Table: ACSDP5Y2021.DP03

	Bethlehem CDP, North Carolina			
Label	Estimate	Margin of Error	Percent	Percent Margin of
\$15,000 to \$24,999	12	±20	1.1%	±1.8
\$25,000 to \$34,999	57	±45	5.2%	±4.1
\$35,000 to \$49,999	52	±51	4.7%	±5.0
\$50,000 to \$74,999	232	±129	21.1%	±10.3
\$75,000 to \$99,999	158	±74	14.4%	±6.5
\$100,000 to \$149,999	258	±135	23.5%	±11.0
\$150,000 to \$199,999	142	±83	12.9%	±7.6
\$200,000 or more	157	±110	14.3%	±9.9
Median family income (dollars)	101,518	±22,742	(X)	(X)
Mean family income (dollars)	129,726	±35,587	(X)	(X)
Per capita income (dollars)	49,083	±12,391	(X)	(X)
Nonfamily households	494	±150	494	(X)
Median nonfamily income (dollars)	47,622	±14,526	(X)	(X)
Mean nonfamily income (dollars)	51,734	±14,333	(X)	(X)
Median earnings for workers (dollars)	49,393	±10,005	(X)	(X)
Median earnings for male full-time, year-round workers (dollars)	83,906	±21,505	(X)	(X)
Median earnings for female full-time, year-round workers (dollars)	47,964	±13,063	(X)	(X)
HEALTH INSURANCE COVERAGE				
Civilian noninstitutionalized population	3,593	±604	3,593	(X)
With health insurance coverage	3,310	±558	92.1%	±3.6
With private health insurance	2,776	±483	77.3%	±7.7
With public coverage	1,233	±291	34.3%	±6.3
No health insurance coverage	283	±144	7.9%	±3.6
Civilian noninstitutionalized population under 19 years	607	±222	607	(X)
No health insurance coverage	0	±13	0.0%	±6.4
Civilian noninstitutionalized population 19 to 64 years	2,084	±429	2,084	(X)
In labor force:	1,596	±304	1,596	(X)
Employed:	1,521	±287	1,521	(X)

Table: ACSDP5Y2021.DP03

	Bethlehem CDP, North Carolina			
Label	Estimate	Margin of Error	Percent	Percent Margin of
With health insurance coverage	1,396	±275	91.8%	±6.3
With private health insurance	1,396	±275	91.8%	±6.3
With public coverage	65	±52	4.3%	±3.4
No health insurance coverage	125	±100	8.2%	±6.3
Unemployed:	75	±78	75	(X)
With health insurance coverage	19	±30	25.3%	±47.3
With private health insurance	19	±30	25.3%	±47.3
With public coverage	0	±13	0.0%	±38.0
No health insurance coverage	56	±76	74.7%	±47.3
Not in labor force:	488	±220	488	(X)
With health insurance coverage	386	±198	79.1%	±16.4
With private health insurance	360	±196	73.8%	±18.1
With public coverage	106	±78	21.7%	±16.5
No health insurance coverage	102	±88	20.9%	±16.4
PERCENTAGE OF FAMILIES AND PEOPLE WHOSE INCOME IN THE PAST 12 MONTHS IS BELOW THE POVERTY LEVEL				
All families	(X)	(X)	2.6%	±3.1
With related children of the householder under 18 years	(X)	(X)	0.0%	±11.4
With related children of the householder under 5 years only	(X)	(X)	0.0%	±70.1
Married couple families	(X)	(X)	3.3%	±3.8
With related children of the householder under 18 years	(X)	(X)	0.0%	±18.9
With related children of the householder under 5 years only	(X)	(X)	0.0%	±70.1
Families with female householder, no spouse present	(X)	(X)	0.0%	±28.8

Table: ACSDP5Y2021.DP03

	Bethlehem CDP, North Carolina			
Label	Estimate	Margin of Error	Percent	Percent Margin of
With related children of the householder under 18 years	(X)	(X)	0.0%	±41.8
With related children of the householder under 5 years only	(X)	(X)	-	**
All people	(X)	(X)	3.3%	±2.1
Under 18 years	(X)	(X)	0.0%	±7.8
Related children of the householder under 18 years	(X)	(X)	0.0%	±7.8
Related children of the householder under 5 years	(X)	(X)	0.0%	±59.1
Related children of the householder 5 to 17 years	(X)	(X)	0.0%	±8.3
18 years and over	(X)	(X)	3.8%	±2.4
18 to 64 years	(X)	(X)	4.4%	±3.2
65 years and over	(X)	(X)	2.5%	±2.9
People in families	(X)	(X)	1.8%	±2.1
Unrelated individuals 15 years and over	(X)	(X)	11.2%	±7.4

SELECTED HOUSING CHARACTERISTICS

Note: The table shown may have been modified by user selections. Some information may be missing.

DATA NOTES	
TABLE ID:	DP04
SURVEY/PROGRAM:	American Community Survey
VINTAGE:	2021
DATASET:	ACSDP5Y2021
PRODUCT:	ACS 5-Year Estimates Data Profiles
UNIVERSE:	None
FTP URL:	None
API URL:	https://api.census.gov/data/2021/acs/acs5/profile
USER SELECTIONS	
TABLES	DP04
GEOS	Bethlehem CDP, North Carolina
EXCLUDED COLUMNS	
	None
APPLIED FILTERS	
	None
APPLIED SORTS	
	None
PIVOT & GROUPING	
PIVOT COLUMNS	None
PIVOT MODE	Off
ROW GROUPS	None
VALUE COLUMNS	None
WEB ADDRESS	
	https://data.census.gov/table?q=dp04&g=1600000US3705530&tid=ACSDP5Y2021.DP04
TABLE NOTES	
	Although the American Community Survey (ACS) produces population, demographic and housing unit estimates, it is the Census Bureau's Population Estimates Program that produces and disseminates the official estimates of the population for the nation, states, counties, cities, and towns and estimates of housing units for states and counties.
	Supporting documentation on code lists, subject definitions, data accuracy, and statistical testing can be found on the American Community Survey website in the Technical Documentation section.
	Sample size and data quality measures (including coverage rates, allocation rates, and response rates) can be found on the American Community Survey website in the Methodology section.
	Source: U.S. Census Bureau, 2017-2021 American Community Survey 5-Year Estimates
	Data are based on a sample and are subject to sampling variability. The degree of uncertainty for an estimate arising from sampling variability is represented through the use of a margin of error. The value shown here is the 90 percent margin of error. The margin of error can be interpreted roughly as providing a 90 percent probability that the interval defined by the estimate minus the margin of error and the estimate plus the margin of error (the lower and upper confidence bounds) contains the true value. In addition to sampling variability, the ACS estimates are subject to nonsampling error (for a discussion of nonsampling variability, see ACS Technical Documentation). The effect of nonsampling error is not represented in these tables.
	Households not paying cash rent are excluded from the calculation of median gross rent.
	Telephone service data are not available for certain geographic areas due to problems with data collection of this question that occurred in 2019. Both ACS 1-year and ACS 5-year files were affected. It may take several years in the ACS 5-year files until the estimates are available for the geographic areas affected.

	<p>The 2017-2021 American Community Survey (ACS) data generally reflect the March 2020 Office of Management and Budget (OMB) delineations of metropolitan and micropolitan statistical areas. In certain instances, the names, codes, and boundaries of the principal cities shown in ACS tables may differ from the OMB delineation lists due to differences in the effective dates of the geographic entities.</p>
	<p>Estimates of urban and rural populations, housing units, and characteristics reflect boundaries of urban areas defined based on Census 2010 data. As a result, data for urban and rural areas from the ACS do not necessarily reflect the results of ongoing urbanization.</p>
	<p>Explanation of Symbols:- The estimate could not be computed because there were an insufficient number of sample observations. For a ratio of medians estimate, one or both of the median estimates falls in the lowest interval or highest interval of an open-ended distribution. For a 5-year median estimate, the margin of error associated with a median was larger than the median itself. N The estimate or margin of error cannot be displayed because there were an insufficient number of sample cases in the selected geographic area. (X) The estimate or margin of error is not applicable or not available. median- The median falls in the lowest interval of an open-ended distribution (for example "2,500-") median+ The median falls in the highest interval of an open-ended distribution (for example "250,000+"). ** The margin of error could not be computed because there were an insufficient number of sample observations. *** The margin of error could not be computed because the median falls in the lowest interval or highest interval of an open-ended distribution. **** A margin of error is not appropriate because the corresponding estimate is controlled to an independent population or housing estimate. Effectively, the corresponding estimate has no sampling error and the margin of error may be treated as zero.</p>
<p>COLUMN NOTES</p>	<p>None</p>

Table: ACSDP5Y2021.DP04

	Bethlehem CDP, North Carolina			
Label	Estimate	Margin of Error	Percent	Percent Margin of
HOUSING OCCUPANCY				
Total housing units	1,766	±237	1,766	(X)
Occupied housing units	1,591	±231	90.1%	±5.1
Vacant housing units	175	±93	9.9%	±5.1
Homeowner vacancy rate	3.5	±3.7	(X)	(X)
Rental vacancy rate	0.0	±18.7	(X)	(X)
UNITS IN STRUCTURE				
Total housing units	1,766	±237	1,766	(X)
1-unit, detached	1,487	±231	84.2%	±7.1
1-unit, attached	11	±18	0.6%	±1.0
2 units	109	±80	6.2%	±4.6
3 or 4 units	0	±13	0.0%	±2.2
5 to 9 units	0	±13	0.0%	±2.2
10 to 19 units	0	±13	0.0%	±2.2
20 or more units	0	±13	0.0%	±2.2
Mobile home	159	±118	9.0%	±6.4
Boat, RV, van, etc.	0	±13	0.0%	±2.2
YEAR STRUCTURE BUILT				
Total housing units	1,766	±237	1,766	(X)
Built 2020 or later	0	±13	0.0%	±2.2
Built 2010 to 2019	83	±81	4.7%	±4.5
Built 2000 to 2009	272	±113	15.4%	±6.8
Built 1990 to 1999	490	±151	27.7%	±7.2
Built 1980 to 1989	279	±152	15.8%	±8.2
Built 1970 to 1979	324	±103	18.3%	±5.5
Built 1960 to 1969	124	±83	7.0%	±4.6
Built 1950 to 1959	39	±38	2.2%	±2.1
Built 1940 to 1949	48	±57	2.7%	±3.2
Built 1939 or earlier	107	±80	6.1%	±4.3
ROOMS				
Total housing units	1,766	±237	1,766	(X)
1 room	23	±27	1.3%	±1.5
2 rooms	0	±13	0.0%	±2.2
3 rooms	16	±28	0.9%	±1.6
4 rooms	229	±84	13.0%	±4.5
5 rooms	485	±190	27.5%	±9.2
6 rooms	255	±87	14.4%	±4.8
7 rooms	291	±128	16.5%	±6.9
8 rooms	134	±79	7.6%	±4.5
9 rooms or more	333	±122	18.9%	±6.4
Median rooms	6.0	±0.6	(X)	(X)
BEDROOMS				
Total housing units	1,766	±237	1,766	(X)

Table: ACSDP5Y2021.DP04

	Bethlehem CDP, North Carolina			
Label	Estimate	Margin of Error	Percent	Percent Margin of
No bedroom	23	±27	1.3%	±1.5
1 bedroom	13	±22	0.7%	±1.2
2 bedrooms	318	±134	18.0%	±6.7
3 bedrooms	992	±207	56.2%	±9.5
4 bedrooms	356	±154	20.2%	±8.3
5 or more bedrooms	64	±52	3.6%	±3.0
HOUSING TENURE				
Occupied housing units	1,591	±231	1,591	(X)
Owner-occupied	1,399	±198	87.9%	±7.5
Renter-occupied	192	±131	12.1%	±7.5
Average household size of owner-occupied unit	2.25	±0.27	(X)	(X)
Average household size of renter-occupied unit	2.30	±0.90	(X)	(X)
YEAR HOUSEHOLDER MOVED INTO UNIT				
Occupied housing units	1,591	±231	1,591	(X)
Moved in 2019 or later	55	±47	3.5%	±3.0
Moved in 2015 to 2018	525	±193	33.0%	±9.9
Moved in 2010 to 2014	124	±82	7.8%	±4.9
Moved in 2000 to 2009	393	±116	24.7%	±7.0
Moved in 1990 to 1999	267	±110	16.8%	±7.2
Moved in 1989 and earlier	227	±96	14.3%	±5.5
VEHICLES AVAILABLE				
Occupied housing units	1,591	±231	1,591	(X)
No vehicles available	27	±30	1.7%	±1.9
1 vehicle available	444	±164	27.9%	±8.9
2 vehicles available	602	±170	37.8%	±8.4
3 or more vehicles available	518	±166	32.6%	±10.3
HOUSE HEATING FUEL				
Occupied housing units	1,591	±231	1,591	(X)
Utility gas	318	±143	20.0%	±8.9
Bottled, tank, or LP gas	77	±53	4.8%	±3.3
Electricity	1,151	±242	72.3%	±9.2
Fuel oil, kerosene, etc.	0	±13	0.0%	±2.5
Coal or coke	0	±13	0.0%	±2.5
Wood	33	±38	2.1%	±2.5
Solar energy	0	±13	0.0%	±2.5
Other fuel	0	±13	0.0%	±2.5
No fuel used	12	±20	0.8%	±1.2
SELECTED CHARACTERISTICS				
Occupied housing units	1,591	±231	1,591	(X)

Table: ACSDP5Y2021.DP04

	Bethlehem CDP, North Carolina			
Label	Estimate	Margin of Error	Percent	Percent Margin of
Lacking complete plumbing facilities	0	±13	0.0%	±2.5
Lacking complete kitchen facilities	0	±13	0.0%	±2.5
No telephone service available	0	±13	0.0%	±2.5
OCCUPANTS PER ROOM				
Occupied housing units	1,591	±231	1,591	(X)
1.00 or less	1,578	±233	99.2%	±1.3
1.01 to 1.50	0	±13	0.0%	±2.5
1.51 or more	13	±20	0.8%	±1.3
VALUE				
Owner-occupied units	1,399	±198	1,399	(X)
Less than \$50,000	54	±46	3.9%	±3.3
\$50,000 to \$99,999	89	±61	6.4%	±4.4
\$100,000 to \$149,999	150	±77	10.7%	±5.5
\$150,000 to \$199,999	178	±88	12.7%	±6.0
\$200,000 to \$299,999	430	±157	30.7%	±9.4
\$300,000 to \$499,999	349	±120	24.9%	±8.0
\$500,000 to \$999,999	149	±108	10.7%	±7.3
\$1,000,000 or more	0	±13	0.0%	±2.8
Median (dollars)	245,900	±26,093	(X)	(X)
MORTGAGE STATUS				
Owner-occupied units	1,399	±198	1,399	(X)
Housing units with a mortgage	804	±193	57.5%	±9.8
Housing units without a mortgage	595	±153	42.5%	±9.8
SELECTED MONTHLY OWNER COSTS (SMOC)				
Housing units with a mortgage	804	±193	804	(X)
Less than \$500	21	±25	2.6%	±3.1
\$500 to \$999	188	±90	23.4%	±10.8
\$1,000 to \$1,499	304	±128	37.8%	±14.7
\$1,500 to \$1,999	125	±95	15.5%	±10.7
\$2,000 to \$2,499	85	±62	10.6%	±7.5
\$2,500 to \$2,999	3	±6	0.4%	±0.8
\$3,000 or more	78	±95	9.7%	±10.9
Median (dollars)	1,281	±180	(X)	(X)
Housing units without a mortgage	595	±153	595	(X)
Less than \$250	28	±33	4.7%	±5.5
\$250 to \$399	91	±57	15.3%	±9.2

Table: ACSDP5Y2021.DP04

	Bethlehem CDP, North Carolina			
Label	Estimate	Margin of Error	Percent	Percent Margin of
\$400 to \$599	357	±132	60.0%	±12.4
\$600 to \$799	51	±45	8.6%	±7.3
\$800 to \$999	68	±50	11.4%	±8.5
\$1,000 or more	0	±13	0.0%	±6.5
Median (dollars)	536	±21	(X)	(X)
SELECTED MONTHLY OWNER COSTS AS A PERCENTAGE OF HOUSEHOLD INCOME (SMOCAPI)				
Housing units with a mortgage (excluding units where SMOCAPI cannot be computed)	804	±193	804	(X)
Less than 20.0 percent	453	±176	56.3%	±15.1
20.0 to 24.9 percent	69	±58	8.6%	±7.2
25.0 to 29.9 percent	68	±58	8.5%	±7.2
30.0 to 34.9 percent	46	±46	5.7%	±5.5
35.0 percent or more	168	±87	20.9%	±9.6
Not computed	0	±13	(X)	(X)
Housing unit without a mortgage (excluding units where SMOCAPI cannot be computed)	566	±149	566	(X)
Less than 10.0 percent	314	±107	55.5%	±15.9
10.0 to 14.9 percent	117	±62	20.7%	±10.4
15.0 to 19.9 percent	23	±25	4.1%	±4.3
20.0 to 24.9 percent	12	±20	2.1%	±3.7
25.0 to 29.9 percent	75	±98	13.3%	±15.8
30.0 to 34.9 percent	0	±13	0.0%	±6.8
35.0 percent or more	25	±28	4.4%	±5.0
Not computed	29	±34	(X)	(X)
GROSS RENT				
Occupied units paying rent	192	±131	192	(X)
Less than \$500	0	±13	0.0%	±18.7
\$500 to \$999	192	±131	100.0%	±18.7
\$1,000 to \$1,499	0	±13	0.0%	±18.7
\$1,500 to \$1,999	0	±13	0.0%	±18.7
\$2,000 to \$2,499	0	±13	0.0%	±18.7
\$2,500 to \$2,999	0	±13	0.0%	±18.7
\$3,000 or more	0	±13	0.0%	±18.7
Median (dollars)	679	±204	(X)	(X)
No rent paid	0	±13	(X)	(X)

Table: ACSDP5Y2021.DP04

Bethlehem CDP, North Carolina				
Label	Estimate	Margin of Error	Percent	Percent Margin of
GROSS RENT AS A PERCENTAGE OF HOUSEHOLD INCOME (GRAPI)				
Occupied units paying rent (excluding units where GRAPI cannot be computed)	192	±131	192	(X)
Less than 15.0 percent	105	±87	54.7%	±36.0
15.0 to 19.9 percent	62	±84	32.3%	±36.6
20.0 to 24.9 percent	0	±13	0.0%	±18.7
25.0 to 29.9 percent	0	±13	0.0%	±18.7
30.0 to 34.9 percent	0	±13	0.0%	±18.7
35.0 percent or more	25	±28	13.0%	±16.8
Not computed	0	±13	(X)	(X)

ACS DEMOGRAPHIC AND HOUSING ESTIMATES		United States [®] Census Bureau
Note: The table shown may have been modified by user selections. Some information may be missing.		
DATA NOTES		
TABLE ID:	DP05	
SURVEY/PROGRAM:	American Community Survey	
VINTAGE:	2021	
DATASET:	ACSDP5Y2021	
PRODUCT:	ACS 5-Year Estimates Data Profiles	
UNIVERSE:	None	
FTP URL:	None	
API URL:	https://api.census.gov/data/2021/acs/acs5/profile	
USER SELECTIONS		
TABLES	DP05	
GEOS	Bethlehem CDP, North Carolina	
EXCLUDED COLUMNS		
	None	
APPLIED FILTERS		
	None	
APPLIED SORTS		
	None	
PIVOT & GROUPING		
PIVOT COLUMNS	None	
PIVOT MODE	Off	
ROW GROUPS	None	
VALUE COLUMNS	None	
WEB ADDRESS		
	https://data.census.gov/table?q=dp05&g=1600000US3705530&tid=ACSDP5Y2021.DP05	
TABLE NOTES		
	Although the American Community Survey (ACS) produces population, demographic and housing unit estimates, it is the Census Bureau's Population Estimates Program that produces and disseminates the official estimates of the population for the nation, states, counties, cities, and towns and estimates of housing units for states and counties.	
	Supporting documentation on code lists, subject definitions, data accuracy, and statistical testing can be found on the American Community Survey website in the Technical Documentation section.	
	Sample size and data quality measures (including coverage rates, allocation rates, and response rates) can be found on the American Community Survey website in the Methodology section.	
	Source: U.S. Census Bureau, 2017-2021 American Community Survey 5-Year Estimates	
	Data are based on a sample and are subject to sampling variability. The degree of uncertainty for an estimate arising from sampling variability is represented through the use of a margin of error. The value shown here is the 90 percent margin of error. The margin of error can be interpreted roughly as providing a 90 percent probability that the interval defined by the estimate minus the margin of error and the estimate plus the margin of error (the lower and upper confidence bounds) contains the true value. In addition to sampling variability, the ACS estimates are subject to nonsampling error (for a discussion of nonsampling variability, see ACS Technical Documentation). The effect of nonsampling error is not represented in these tables.	
	For more information on understanding Hispanic origin and race data, please see the America Counts: Stories Behind the Numbers article entitled, 2020 Census Illuminates Racial and Ethnic Composition of the Country, issued August 2021.	
	The Hispanic origin and race codes were updated in 2020. For more information on the Hispanic origin and race code changes, please visit the American Community Survey Technical Documentation website.	

	The 2017-2021 American Community Survey (ACS) data generally reflect the March 2020 Office of Management and Budget (OMB) delineations of metropolitan and micropolitan statistical areas. In certain instances, the names, codes, and boundaries of the principal cities shown in ACS tables may differ from the OMB delineation lists due to differences in the effective dates of the geographic entities.
	Estimates of urban and rural populations, housing units, and characteristics reflect boundaries of urban areas defined based on Census 2010 data. As a result, data for urban and rural areas from the ACS do not necessarily reflect the results of ongoing urbanization.
	Explanation of Symbols:- The estimate could not be computed because there were an insufficient number of sample observations. For a ratio of medians estimate, one or both of the median estimates falls in the lowest interval or highest interval of an open-ended distribution. For a 5-year median estimate, the margin of error associated with a median was larger than the median itself.N The estimate or margin of error cannot be displayed because there were an insufficient number of sample cases in the selected geographic area. (X) The estimate or margin of error is not applicable or not available.median- The median falls in the lowest interval of an open-ended distribution (for example "2,500-")median+ The median falls in the highest interval of an open-ended distribution (for example "250,000+").** The margin of error could not be computed because there were an insufficient number of sample observations.*** The margin of error could not be computed because the median falls in the lowest interval or highest interval of an open-ended distribution.***** A margin of error is not appropriate because the corresponding estimate is controlled to an independent population or housing estimate. Effectively, the corresponding estimate has no sampling error and the margin of error may be treated as zero.
COLUMN NOTES	None

Table: ACSDP5Y2021.DP05

	Bethlehem CDP, North Carolina			
Label	Estimate	Margin of Error	Percent	Percent Margin of
SEX AND AGE				
Total population	3,593	±604	3,593	(X)
Male	1,889	±352	52.6%	±4.2
Female	1,704	±324	47.4%	±4.2
Sex ratio (males per 100 females)	110.9	±18.7	(X)	(X)
Under 5 years	31	±26	0.9%	±0.7
5 to 9 years	171	±148	4.8%	±3.8
10 to 14 years	168	±106	4.7%	±2.9
15 to 19 years	256	±128	7.1%	±3.6
20 to 24 years	95	±94	2.6%	±2.4
25 to 34 years	357	±186	9.9%	±4.5
35 to 44 years	485	±174	13.5%	±4.6
45 to 54 years	430	±165	12.0%	±5.0
55 to 59 years	266	±129	7.4%	±3.6
60 to 64 years	432	±204	12.0%	±4.6
65 to 74 years	559	±156	15.6%	±4.2
75 to 84 years	210	±85	5.8%	±2.7
85 years and over	133	±100	3.7%	±2.6
Median age (years)	50.4	±7.4	(X)	(X)
Under 18 years	493	±208	13.7%	±4.8
16 years and over	3,205	±515	89.2%	±4.8
18 years and over	3,100	±509	86.3%	±4.8
21 years and over	2,948	±502	82.0%	±4.9
62 years and over	1,229	±312	34.2%	±6.5
65 years and over	902	±197	25.1%	±5.3
18 years and over	3,100	±509	3,100	(X)
Male	1,620	±288	52.3%	±4.4
Female	1,480	±289	47.7%	±4.4
Sex ratio (males per 100 females)	109.5	±19.3	(X)	(X)
65 years and over	902	±197	902	(X)
Male	524	±133	58.1%	±8.3
Female	378	±115	41.9%	±8.3
Sex ratio (males per 100 females)	138.6	±47.1	(X)	(X)
RACE				
Total population	3,593	±604	3,593	(X)
One race	3,571	±602	99.4%	±0.8
Two or more races	22	±27	0.6%	±0.8
One race	3,571	±602	99.4%	±0.8
White	3,425	±604	95.3%	±3.8
Black or African American	0	±13	0.0%	±1.1

Table: ACSDP5Y2021.DP05

	Bethlehem CDP, North Carolina			
Label	Estimate	Margin of Error	Percent	Percent Margin of
American Indian and Alaska Native	0	±13	0.0%	±1.1
Cherokee tribal grouping	0	±13	0.0%	±1.1
Chippewa tribal grouping	0	±13	0.0%	±1.1
Navajo tribal grouping	0	±13	0.0%	±1.1
Sioux tribal grouping	0	±13	0.0%	±1.1
Asian	146	±137	4.1%	±3.8
Asian Indian	61	±67	1.7%	±1.9
Chinese	85	±131	2.4%	±3.6
Filipino	0	±13	0.0%	±1.1
Japanese	0	±13	0.0%	±1.1
Korean	0	±13	0.0%	±1.1
Vietnamese	0	±13	0.0%	±1.1
Other Asian	0	±13	0.0%	±1.1
Native Hawaiian and Other Pacific Islander	0	±13	0.0%	±1.1
Native Hawaiian	0	±13	0.0%	±1.1
Chamorro	0	±13	0.0%	±1.1
Samoan	0	±13	0.0%	±1.1
Other Pacific Islander	0	±13	0.0%	±1.1
Some other race	0	±13	0.0%	±1.1
Two or more races	22	±27	0.6%	±0.8
White and Black or African American	0	±13	0.0%	±1.1
White and American Indian and Alaska Native	10	±18	0.3%	±0.5
White and Asian	12	±21	0.3%	±0.6
Black or African American and American Indian and Alaska Native	0	±13	0.0%	±1.1
Race alone or in combination with one or more other races				
Total population	3,593	±604	3,593	(X)
White	3,447	±607	95.9%	±3.8
Black or African American	0	±13	0.0%	±1.1
American Indian and Alaska Native	10	±18	0.3%	±0.5
Asian	158	±138	4.4%	±3.8
Native Hawaiian and Other Pacific Islander	0	±13	0.0%	±1.1
Some other race	0	±13	0.0%	±1.1
HISPANIC OR LATINO AND RACE				
Total population	3,593	±604	3,593	(X)

Table: ACSDP5Y2021.DP05

	Bethlehem CDP, North Carolina			
Label	Estimate	Margin of Error	Percent	Percent Margin of
Hispanic or Latino (of any race)	137	±197	3.8%	±5.4
Mexican	27	±43	0.8%	±1.2
Puerto Rican	0	±13	0.0%	±1.1
Cuban	0	±13	0.0%	±1.1
Other Hispanic or Latino	110	±198	3.1%	±5.4
Not Hispanic or Latino	3,456	±584	96.2%	±5.4
White alone	3,288	±582	91.5%	±6.3
Black or African American alone	0	±13	0.0%	±1.1
American Indian and Alaska Native alone	0	±13	0.0%	±1.1
Asian alone	146	±137	4.1%	±3.8
Native Hawaiian and Other Pacific Islander alone	0	±13	0.0%	±1.1
Some other race alone	0	±13	0.0%	±1.1
Two or more races	22	±27	0.6%	±0.8
Two races including Some other race	0	±13	0.0%	±1.1
Two races excluding Some other race, and Three or more races	22	±27	0.6%	±0.8
Total housing units	1,766	±237	(X)	(X)
CITIZEN, VOTING AGE POPULATION				
Citizen, 18 and over population	3,100	±509	3,100	(X)
Male	1,620	±288	52.3%	±4.4
Female	1,480	±289	47.7%	±4.4