



# Burke County Community Assets Mapping Project



# Project Purpose

- **Improve Burke County's major health challenges**
  - **Physical inactivity**
    - Identify existing places to be active
    - Provide additional places to be active
  - **Poor nutrition**
    - Improve access to healthier foods
      - Local farmers markets
      - Community gardens
      - Grocery stores
  - **Disease prevention**
    - High rates of cancer
    - Heart disease
    - Obesity
    - Type two diabetes

# **Data Collected**

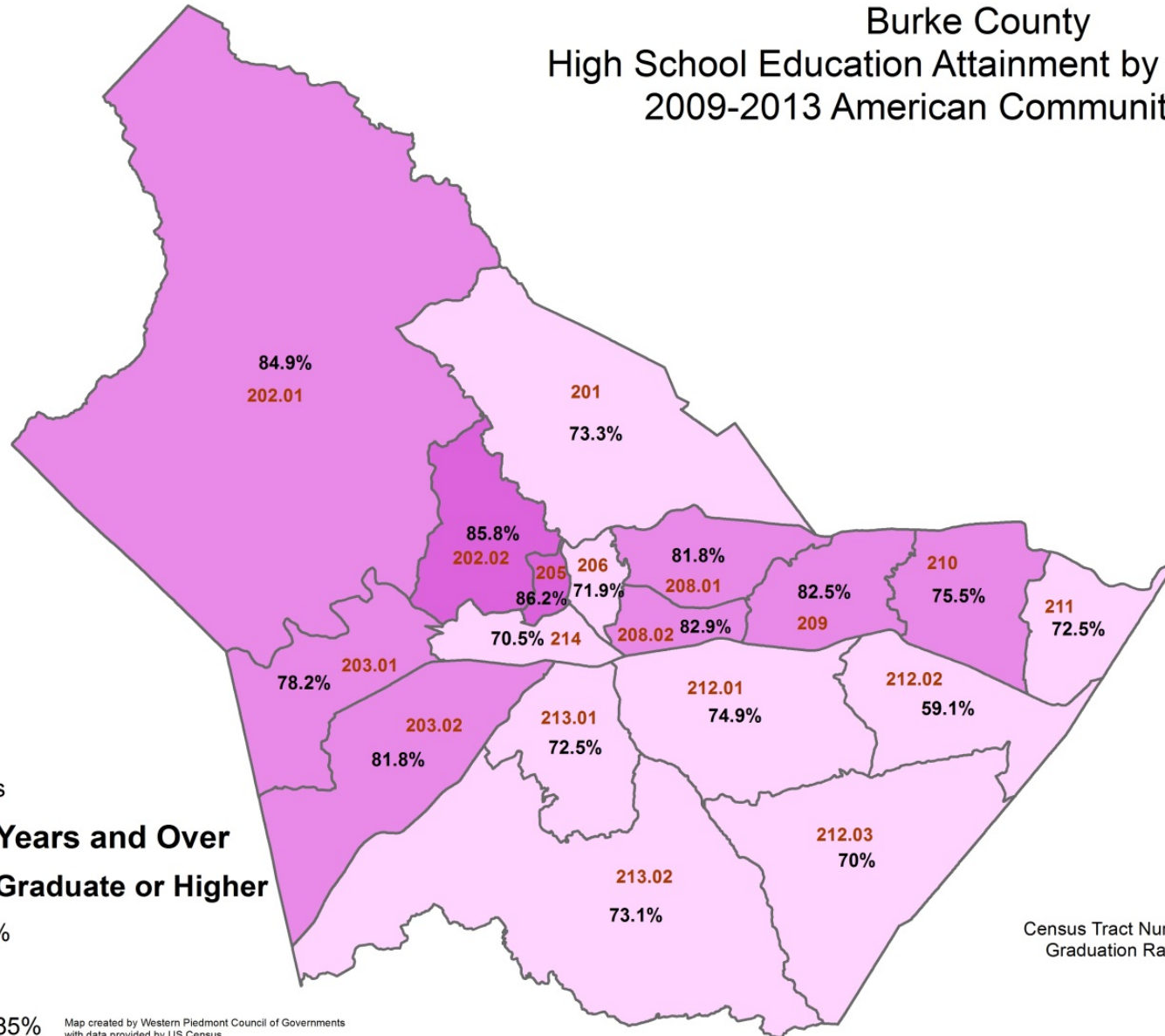
- **School (Public, Private, College) Locations**
- **Church Locations**
- **Community Gardens and Farmer Markets Locations**
- **Convenience Store/Gas Station Locations**
- **Grocery Store Locations**
- **WIC Approved Suppliers/Retailer Locations**
- **SNAP/EBT Retailer Locations**
- **Grocery Desert**
- **Child Care Center Locations**
- **Family Child Care Home Locations**
- **Fast Food Locations**

# Data Collected

- **Multi Modal Infrastructure - existing sidewalks, bike lanes, and greenways**
- **Burke Parks and Recreation Centers (Federal, County, and City)**
- **Medical Office Locations**
- **Chronic Disease Mortality Rates (2009 – 2013, Center for Health and Statistics)**
- **Other Chronic Disease (2014 – Present, Blue Ridge Health Care)**
- **Mental Health Providers**
- **Commuter Patterns (2006 – 2010)**
- **Census - Population, Age Groups, Median Household Income, Poverty, Education Attainment, Housing, Household Vehicle Availability, Race**

# Burke County

## High School Education Attainment by Census Tract, 2009-2013 American Community Survey



### Legend

Census Tracts

### Population 25 Years and Over % High School Graduate or Higher

Less than 75%

75% - 85%

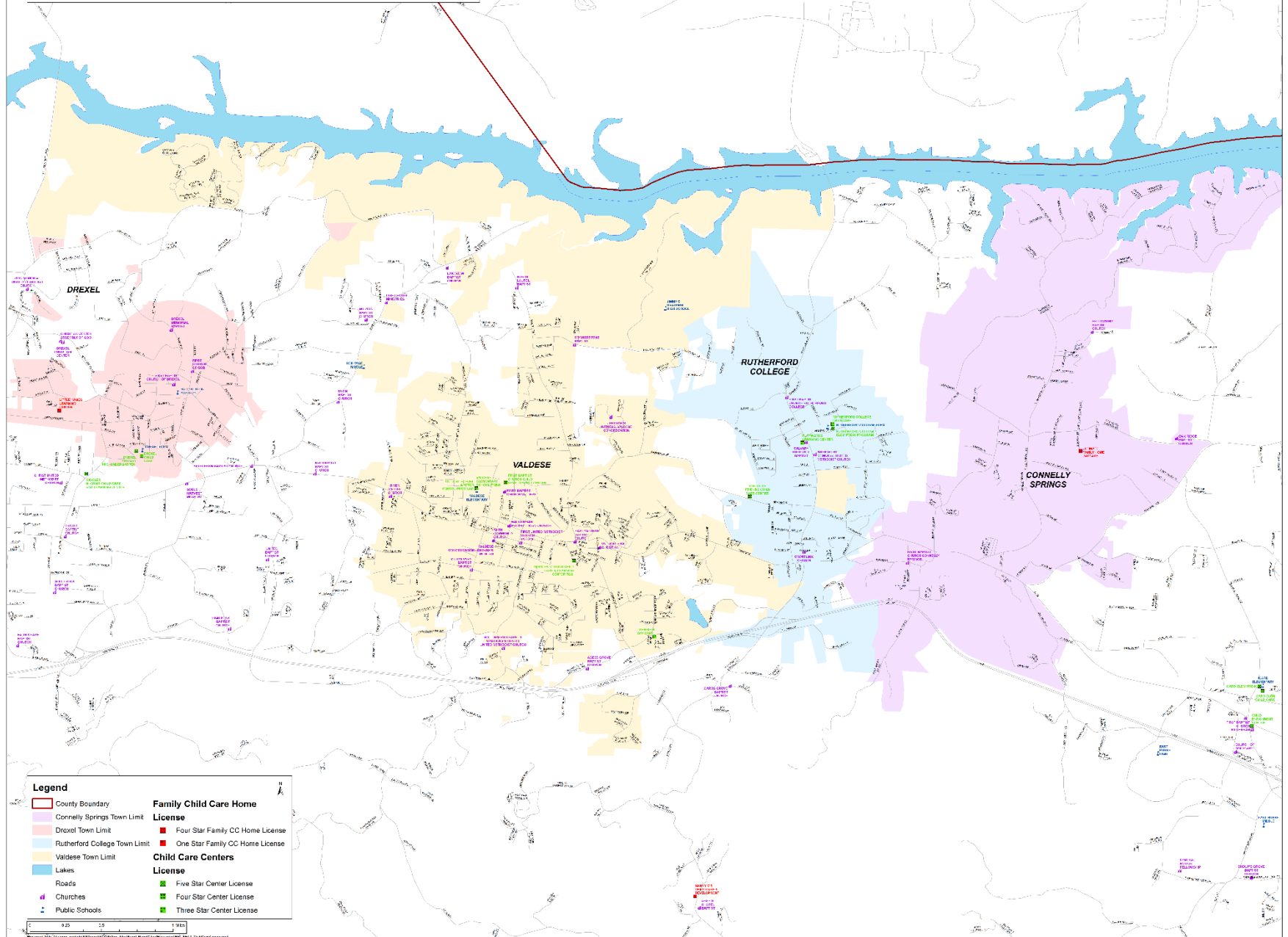
Greater than 85%

Map created by Western Piedmont Council of Governments  
with data provided by US Census.

Census Tract Numbers in **BROWN**.  
Graduation Rates in **BLACK**.

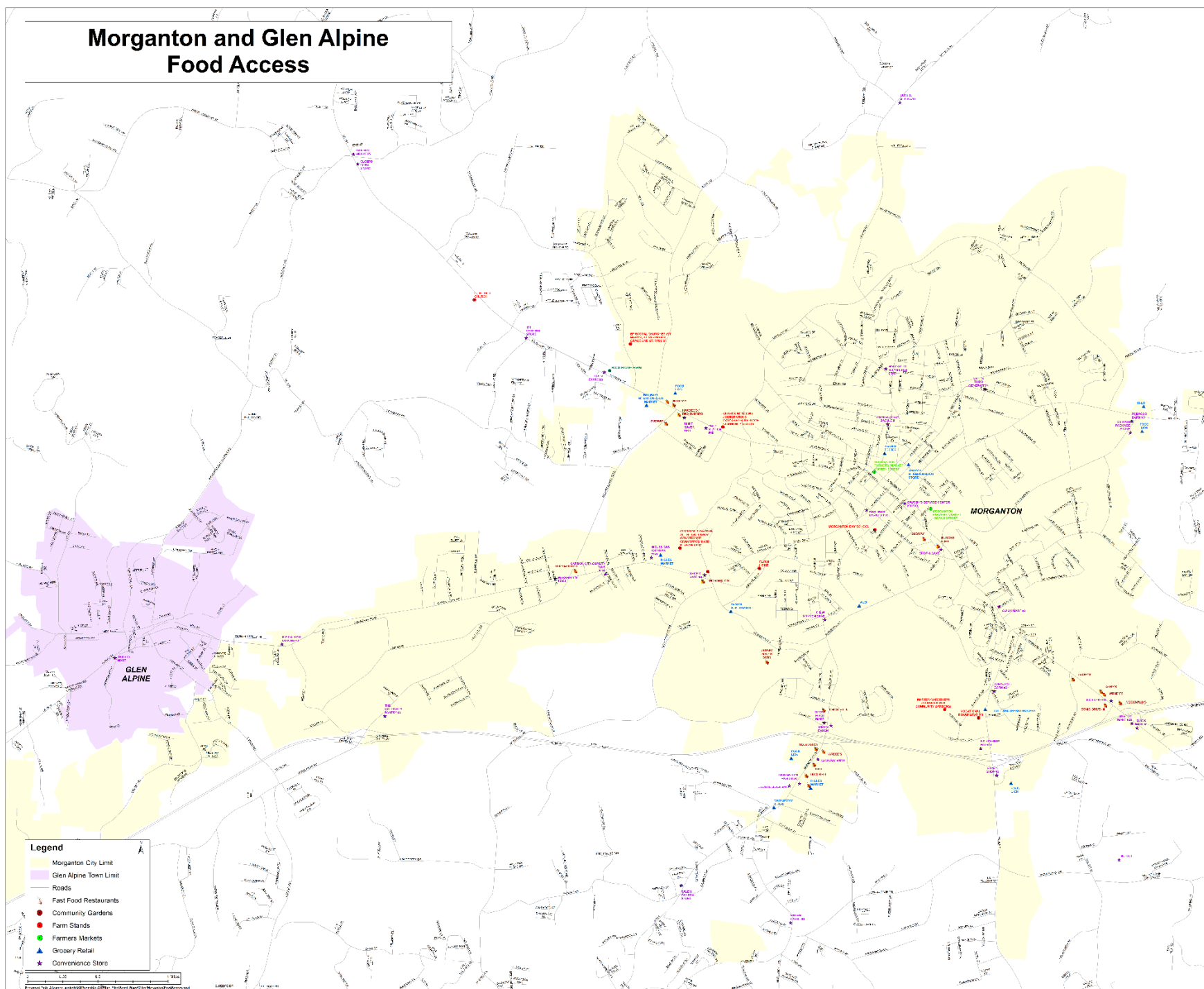


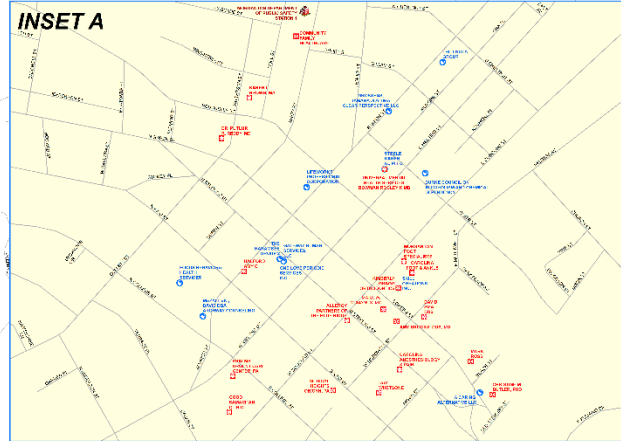
# Drexel, Connelly Springs, Rutherford College, and Valdese Churches and Child Care Access



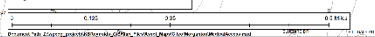


# Morganton and Glen Alpine Food Access



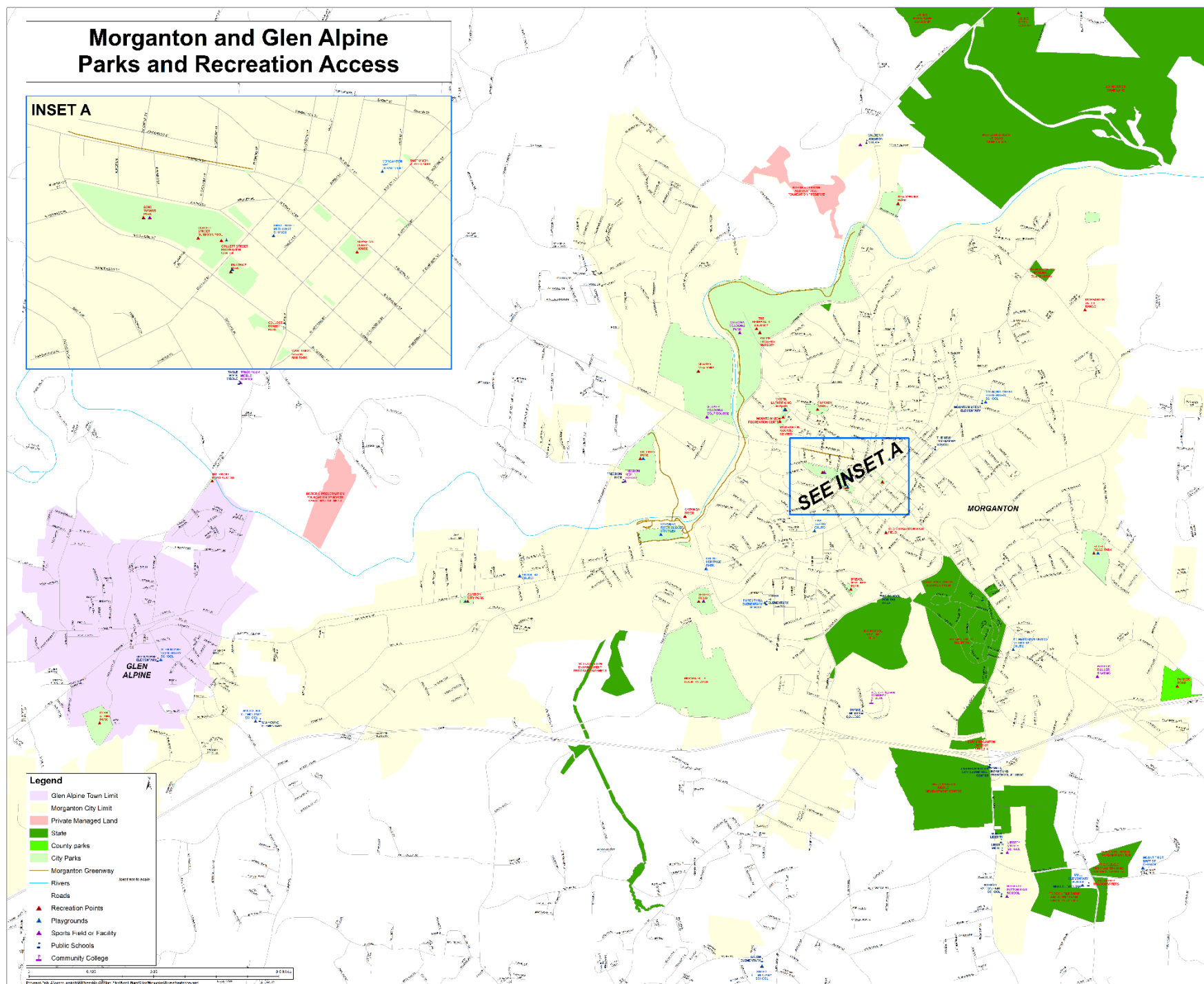
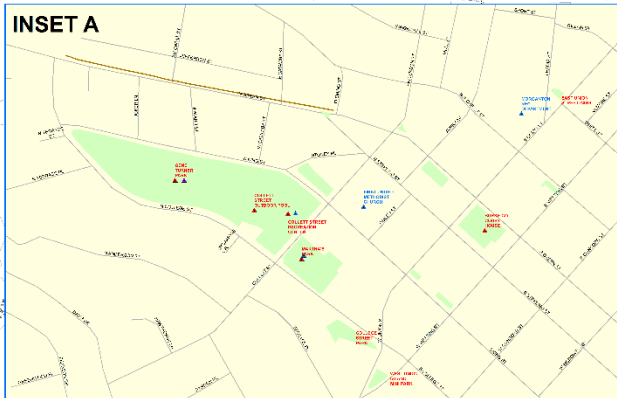
**INSET A**

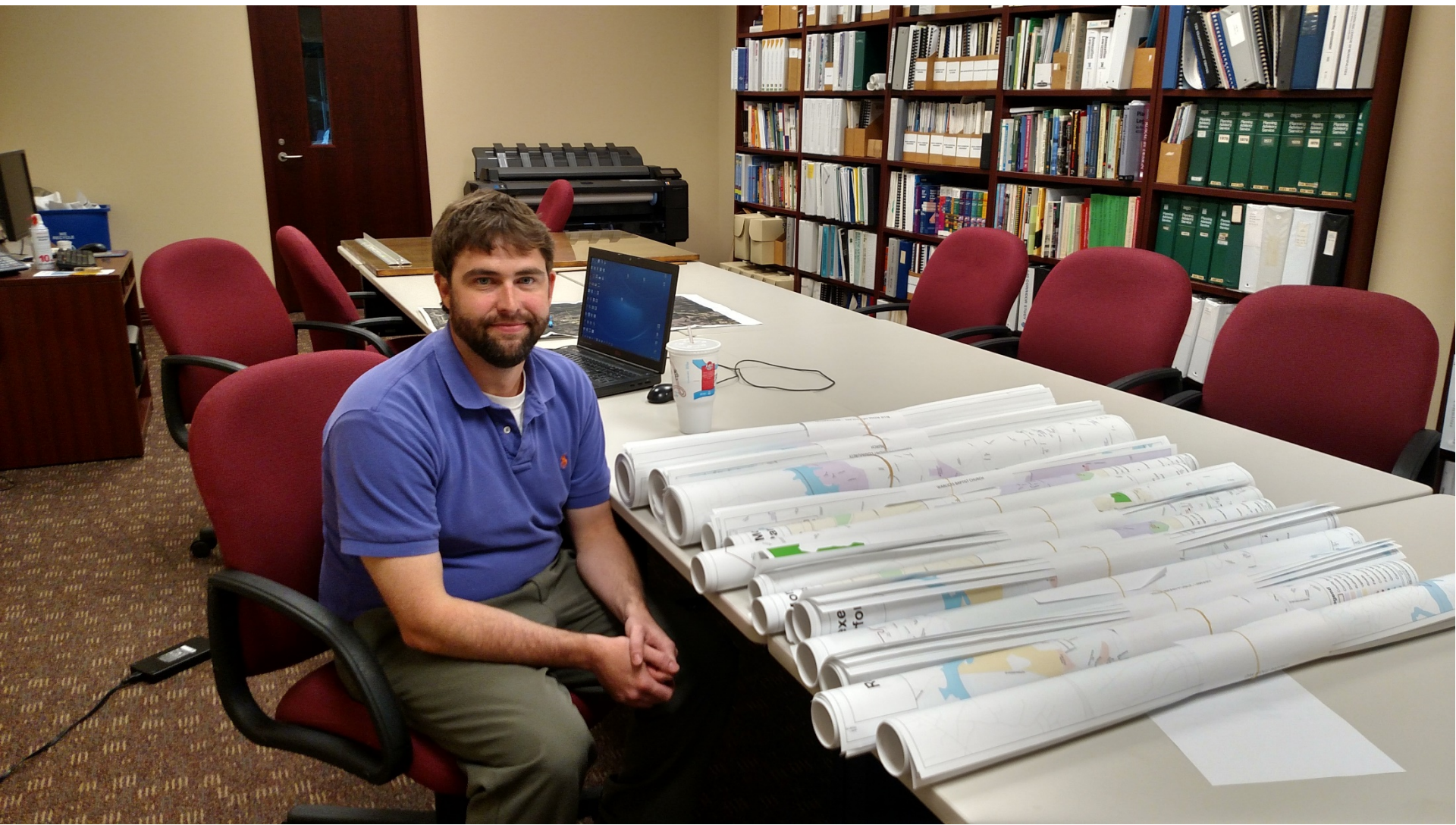
- Morganton City Limit
- Glen Alpine Town Limit
- Roads
- Nursing Homes
- Doctor Offices
- Hospitals
- Burke County Health Department
- Mental Health Providers
- Emergency Medical Services
- Fire Stations





### INSET A

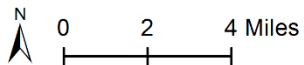
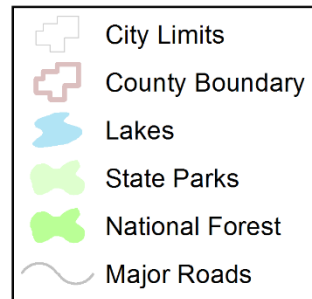






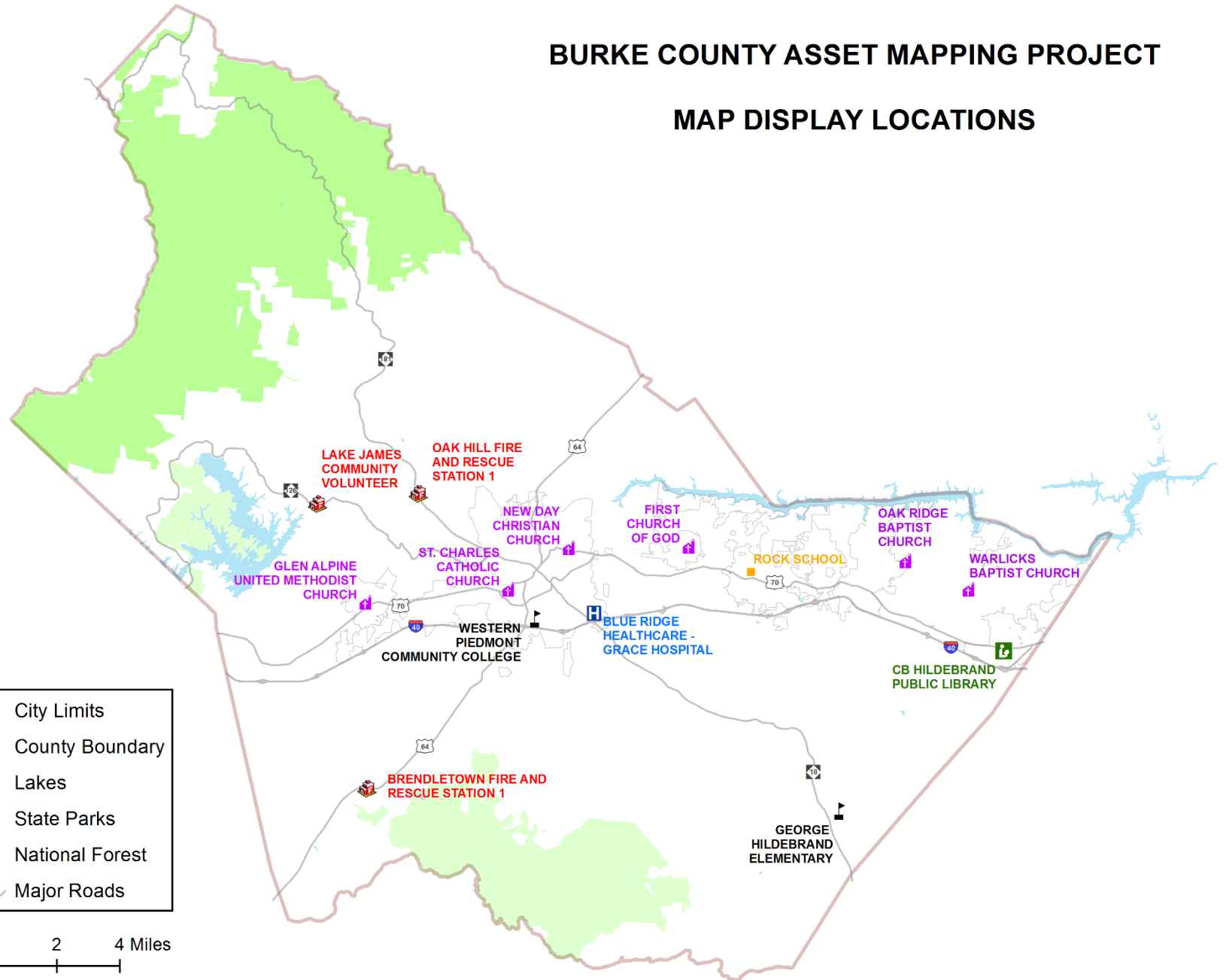
# BURKE COUNTY ASSET MAPPING PROJECT

## MAP DISPLAY LOCATIONS



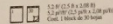
Map updated 09/18/2015 by Western Piedmont Council of Governments.

Document Path: Z:\wpcog\_projects\KBReynolds\_GIS\Map\_Files\potentialmapdisplaylocations.mxd





Easel Pad  
Tableau à feuilles mobiles  
Block de Feuilles Repositionnables



# PLEASE DO NOT WRITE ON MAPS!!!

- Find your community, & others  
& if there are corrections  
please print here.

1. Burgess Day care correct location?
2. Conies Grocery Rename?
3. Dollar General on George Highway?
4. ~~Buckhorn Tavern~~ (126 Lake James) → Closed this Summer
5. Chesterfield Fire Dept.
6. Cookout on highway 18 in Chesterfield
7. Meandog Sanford & Union
8. Haring Store back K&G/Taco Bell on Carbon City Rd
9. Brentdeltown Church Access signs covering a 7th day Adventist Church
10. Hildebran - Go up to Turn Left by BOAT & go less than a mile and a Park  
is on the right (name?)
11. Pleasant Hill Baptist Church Pleasant Hill Ave & Ende Rd
12. Chesterfield Grill Johns River Loop & Hwy 18
13. Chesterfield Elementary School
14. Mt Pleasant United Methodist Church Chesterfield

## Western Piedmont Community College

- Burgess Day Care correct location?
- Connies Grocery rename?
- Dollar General at George Hildebran?
- Chesterfield Fire Dept.
- Cookout on Highway 18 in Chesterfield
- Moondog Sanford & Unions
- Hmong Store beside KFC/Taco Bell on Carbon City Rd
- Brendletown Church Access sign is covering a 7<sup>th</sup> Day Adventist Church
- Hildebran – go up 70, turn left by BB&T and go less than a mile and a park is on the right (name?)
- Pleasant Hill Baptist Church Pleasant Hill Ave & Enola Rd
- Chesterfield Grill Johns River Loop & Hwy 18
- Chesterfield Elementary School
- Mt Plesant United Methodist Church Chesterfield
- Ballpark at the R.O. Huffman center in Drexel (football, baseball, and soccer field)
- Football field and walking track located at Old Rock School in Valdese
- Walking track at Zion Memorial Methodist Church on Zion Rd – Morganton, NC
- Walking track at Hallvburton Academy in Drexel (baseball, football, soccer field as well)

## Warlicks Baptist Church

- Granny's not listed
- New Taco Bell to be built across from Granny's
- Walsh's listed twice
- B&B on twice (should not be at Food Lion)
- Food Lion should be on 70
- Chubbv's sandwich shop should be by Food Lion
- CVS Pharmacy not listed
- Frye Daddy's not listed – Old Corner Café
- Dollar General – Rhodhiss

## George Hildebran Elementary School

- Add Dollar General – Hwy 18
- Add Living Water Baptist Church – G.H. School Rd
- Add Smart's Grove Baptist Church – Hwy 18
- Add Mt. Calvary Baptist Church – Miller Bridge Rd.
- Add Warlick's Chapel Methodist Church – Warlicks Chapel Ch Rd
- Change St. John's Bant to Shady Grove Bant Church on Sugarloaf Rd



## Oak Ridge Baptist Church

- Oak Ridge Baptist Playground Added Aug 2015
- Icard Elementary has playground, ballfield, walking track
- Shady Grove Methodist has basketball court
- Ray Childers Elementary – playground & baseball/softball fields
- Hildebran Icard Community Center has a pool
- Hildebran Elementary has playground & 2 ballfields
- East Burke High has playground behind softball field
- Granny's Kitchen is missing
- New Taco Bell is missing
- Shekinah Food Ministry
- Rhodhiss Park
- The Olde Store
- Seventy Six Pizza
- Handy Mart
- Berea Baptist Church
- Friendship Methodist Church
- Shady Grove Methodist Church
- Rhodhiss United Methodist
- Shekinah Food Ministry of Oak Ridge Baptist on Icard-Rhodhiss Rd
- Dollar General (past Cape Hickory Rd – on Icard Rhodhiss Rd) going toward Castle Bridge
- Dollar General beside Bojangles in Hildebran
- Chicken-In-Basket Restaurant across from Berea Baptist on Us 64-70
- Knob Superette – sells prepared food & groceries
- Bud's Corner Kitchen – on 70 below Hildebran Elementary at stoplight
- B&B Food Store beside Food Lion (should this be Chubbv's?)
- You also have B&B Royal Food Store
- Icard First Baptist is listed as First Baptist Church Hildebran (Hildebran 1<sup>st</sup> Baptist needs to be listed in appropriate place)
- Hildebran First Baptist has food give away one time a month
- Connelly Springs Fire Dept on 64-70 beside Connelly Springs Town Hall

## Rock School

- Remove Valdese Service Center as Conv. Store > Mechanic only
- Add Village Park Mural
- Add Jacumin Plaza
- Move Waldensian Presby. Community Garden to Pralev St. Location
- Change "Country Market" to Big John's tobacco & beverage
- Add BP on corner of Main & Pralev as conv. Store
- Move Still Waters Counseling to Old Rock School Location on Main Street
- Reynold's Family Wellness Center – Chiropractor – on Main St in Valdese
- Add Agape Nursing Facility
- Add Tiger Gym
- Add First Baptist Playground (Valdese)
- Walking Trail @ Valdese Wastewater Treatment Plant on Lovelady Rd
- Add purple triangle to Children's Park for ball field
- Add LPDA Bocce Courts on Laurel St Valdese
- Add Waldensian Presbv Bocce Courts – Main St.
- Add Bocce courts @ Waldensian Winery
- Add Bocce courts @ Trail of Faith in Valdese on Church St.
- Add walking track @ Valdese Hospital
- Move Faith Community Church to new location in Connelly Springs
- Add Jethro's on Church St. (youth facility)
- Jehovah's Witness location on Springwood move to Hwy 70 near Erwood Rd

## **CB Hildebran Public Library**

- Drowning Creek Baptist Church on Cape Hickory Road should be added
- Mount Harmony Methodist Church
- Food Lion on Hwy 70
- Lots of churches missing (small ones)
- B&B 2<sup>nd</sup> Street SW – not there
- First Baptist “Hildebran” should be “Icard”
- Walsh’s Grocery Store – only ONE
- Glory Land Church Baptist 10 mts South Center
- Church of Jesus Christ Latter Day Saints – not there?
- Liberty Baptist in Rhodhiss – other side of Ray Childers

## **New Day Christian Church**

- Jet Xpress Convenience Store on corner of Center St. & Vine Arden
- Hunter’s Chicken & Waffles on Vine Arden between Lenoir Rd and Pine St.
- Southeast Oriental Market – 211 Carbon City Rd
- El Barrio Mini-Market – 800 Block of E Union St

## **Glen Alpine United Methodist Church**

- North Morganton United Methodist Church has a preschool
- Presbyterian Church of Glen Alpine is at (413?) Linville St., across from Glen Alpine UMC
- Faith Freewill Baptist is on Jamestown Rd.
- There is a church on the corner of Jamestown & Conley Rd.
- Bible Baptist Church is on Jamestown Rd, directly across from Lions Hill Rd.

## **St. Charles Catholic Church**

- It was very helpful
- It helped me find my location
- Would like to see Homeless Shelters marked
- The House of Refuge
- The Meeting Place
- Women's Homeless Shelter
- St. Charles Borrowed
- Veterinarians
- Abarroterra is a few blocks off
- Tiendas downtown (Spanish groceries)
- People in jail

## Drexel First Church of God

- Church Map – Zion Memorial United Methodist Church should be at the corner of Zion Road and Settlemvre Road (Note: it is correctly located on the Parks/Recreation Map)
- Jehovah's Witness – Valdese Congregation should be on Hwy 70 East of Valdese (Note: it currently appears twice on map – neither location correct)
- Faith Community Church should be 200? Shady Grove Road north of Hwy 70 East of Rutherford College
- Medical Access – Assistance map – should pharmacies not be listed? Drexel Discount Drug, for example – intersection Hwy 70 & Trinity Church Rd
- Food Access – Main Street Café downtown Drexel; Myras – Mainstreet Valdese; Pizza Hut – Hwy 70 West of Valdese; Lowes Food Store is no longer in Valdese
- Church Map – Drexel – Rosa de Sharon Iglesia Pentecostal – Main Street downtown (across from Main Street Café)
- Drexel Discount Drug Store – Hwy 70 & Trinity Church Road
- Celebration Church – I-40 Exit 107
- Morganton 1<sup>st</sup> Church of God – Summer's Road
- Med Access map – Burkemont Mt Men Group Home ?? (not familiar with this facility – wrong placement on map?)
- Food access map – Jack B Quick #1 – name change – Drexel Quik Mart
- Papa John's Pizza in Fender Plaza on Hwy 70 – Between Simmons Fork & AC Carswell Rd
- Happy Garden in Fender Plaza on Hwy 70 between Simmons Fork & AC Carswell Rd

## **Brendletown Fire and Rescue Station**

- Add Glenda's Plantation @ the end of Bollinger Gap St
- Add Hopewell Family Medicine US 64 (6336 US 64)
- Add Pilot Mtn Coffee Shop (Baker Farm & Pilot St) Pilot Mtn School 4806 US 64 Morg NC
- Drop Salem General Store

## **Blue Ridge Healthcare**

- BR Internal Med Closed
- Carolina Orthopaedic in same building with Alan Jacks
- Add P&R Digestive Health at Internal Med Location
- Mountain Valley Health Clinic Moved next to BR Neurology
- Psalms Urgent Care has moved to Mark McManus Location
- Dr. Shan Khan office located next to Medical/Heights OB/GYN

|

## **Oak Hill Fire and Rescue Station**

- Brown Mtn - Craig's General Store  
Across the new bridge





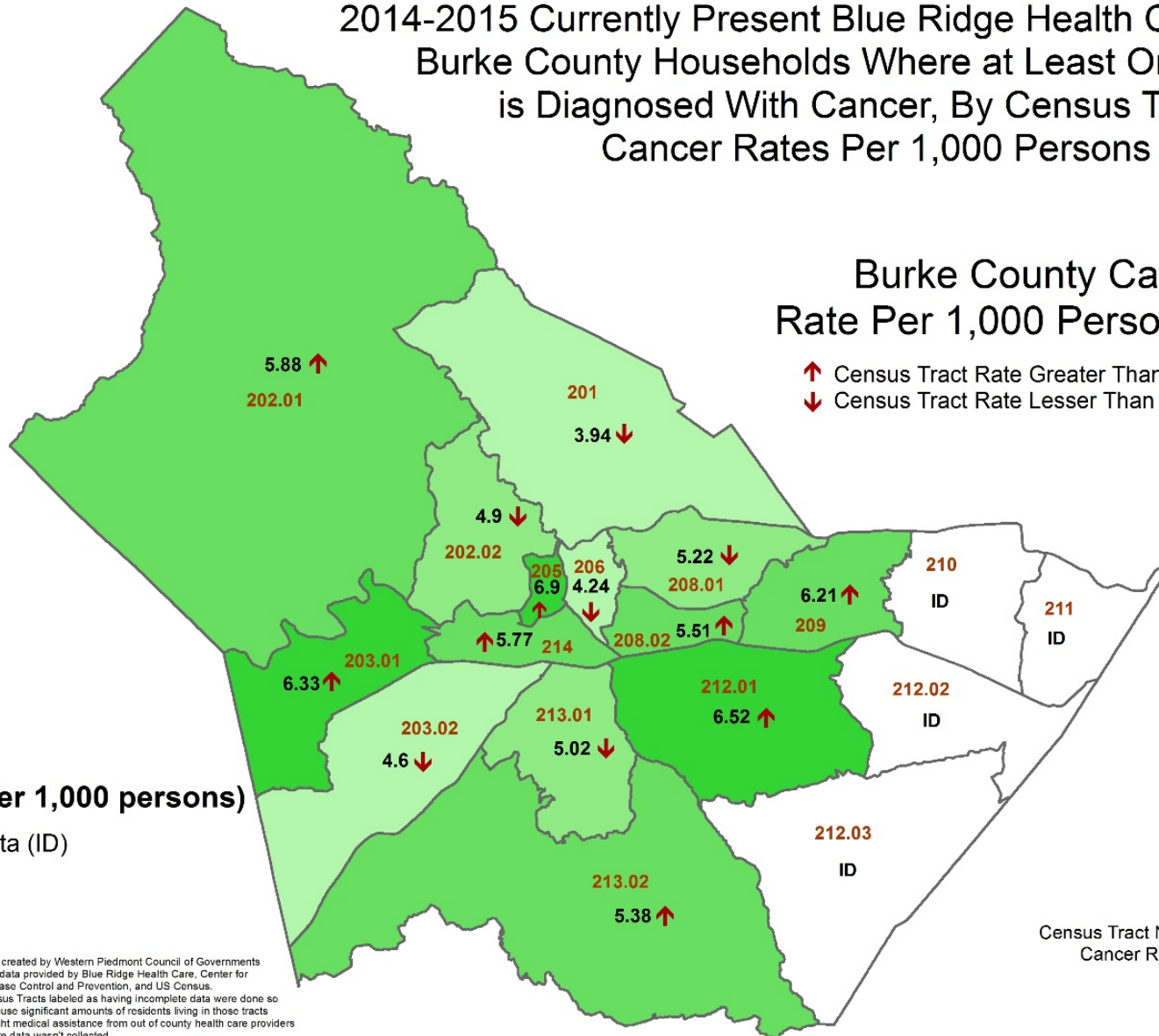
# Next Steps

- Socio-economic data overlaid with the community asset data and chronic disease rates (**in development**)
- Identifying resource gaps in the community (**ongoing**)
- New data updates can be mapped annually to show health changes over 10 year period (**hopefully ongoing**)
- Data analysis of existing data and trends (**hopefully ongoing**)
- Online mapping resource to make data available to all agencies and public (**end product**)
- Improve overall health in Burke County (**ultimate goal**)

# 2014-2015 Currently Present Blue Ridge Health Care Patients In Burke County Households Where at Least One Person is Diagnosed With Cancer, By Census Tracts, Cancer Rates Per 1,000 Persons

Burke County Cancer Rate Per 1,000 Persons = 5.37

↑ Census Tract Rate Greater Than County Rate  
↓ Census Tract Rate Lesser Than County Rate



## Legend

Census Tracts

## Cancer Rates (per 1,000 persons)

Incomplete Data (ID)

0.0 - 4.60

4.61 - 5.37

5.38 - 6.21

6.22 - 6.90

Map created by Western Piedmont Council of Governments with data provided by Blue Ridge Health Care, Center for Disease Control and Prevention, and US Census. Census Tracts labeled as having incomplete data were done so because significant amounts of residents living in those tracts sought medical assistance from out of county health care providers where data wasn't collected.

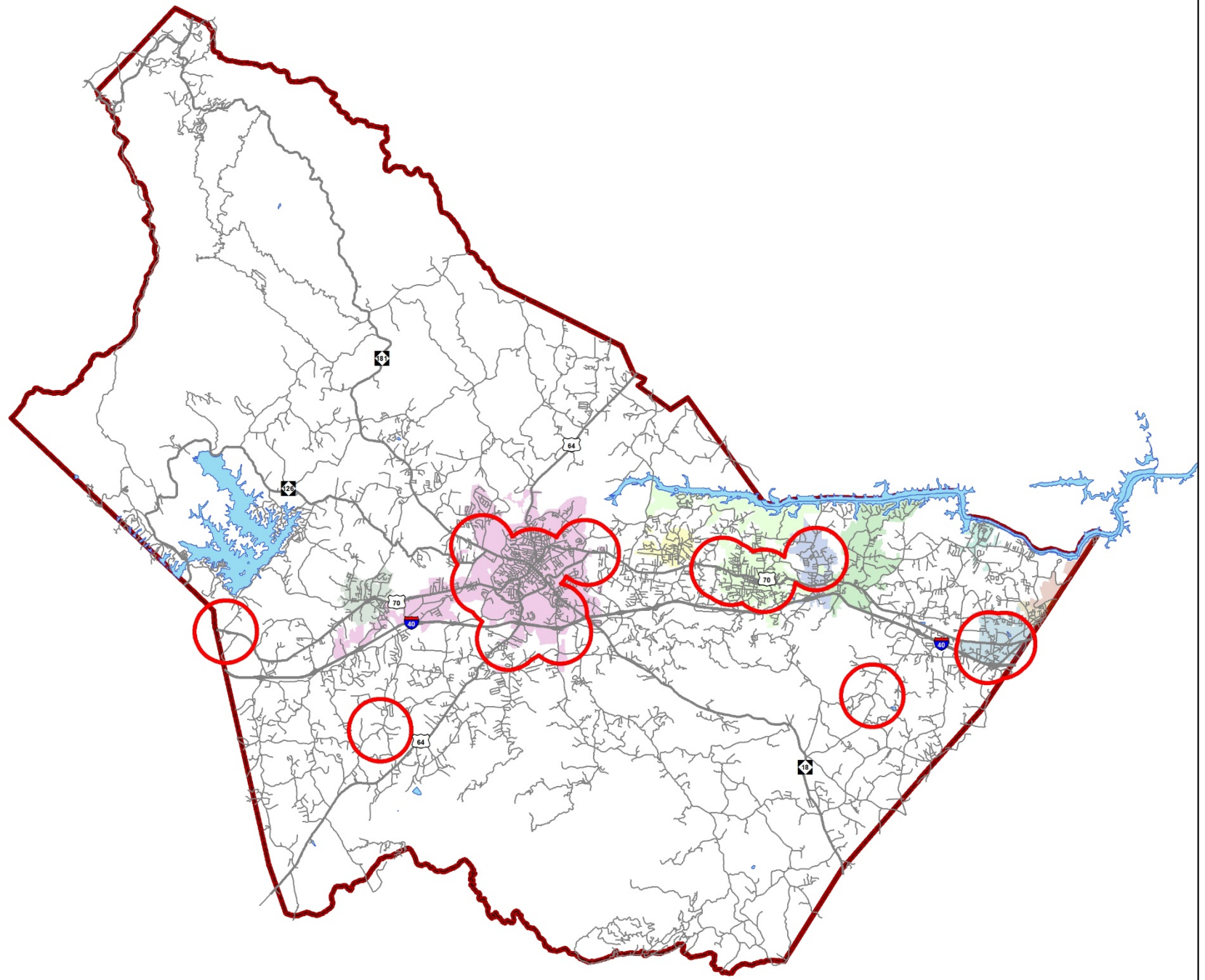
Census Tract Numbers in **BROWN**.  
Cancer Rates in **BLACK**.





# Next Steps

- Socio-economic data overlaid with the community asset data and chronic disease rates (**in development**)
- Identifying resource gaps in the community (**ongoing**)
- New data updates can be mapped annually to show health changes over 10 year period (**hopefully ongoing**)
- Data analysis of existing data and trends (**hopefully ongoing**)
- Online mapping resource to make data available to all agencies and public (**end product**)
- Improve overall health in Burke County (**ultimate goal**)





# Next Steps

- Socio-economic data overlaid with the community asset data and chronic disease rates (**in development**)
- Identifying resource gaps in the community (**ongoing**)
- New data updates can be mapped annually to show health changes over 10 year period (**hopefully ongoing**)
- Data analysis of existing data and trends (**hopefully ongoing**)
- Online mapping resource to make data available to all agencies and public (**end product**)
- Improve overall health in Burke County (**ultimate goal**)