



**Western Piedmont**  
Council of Governments

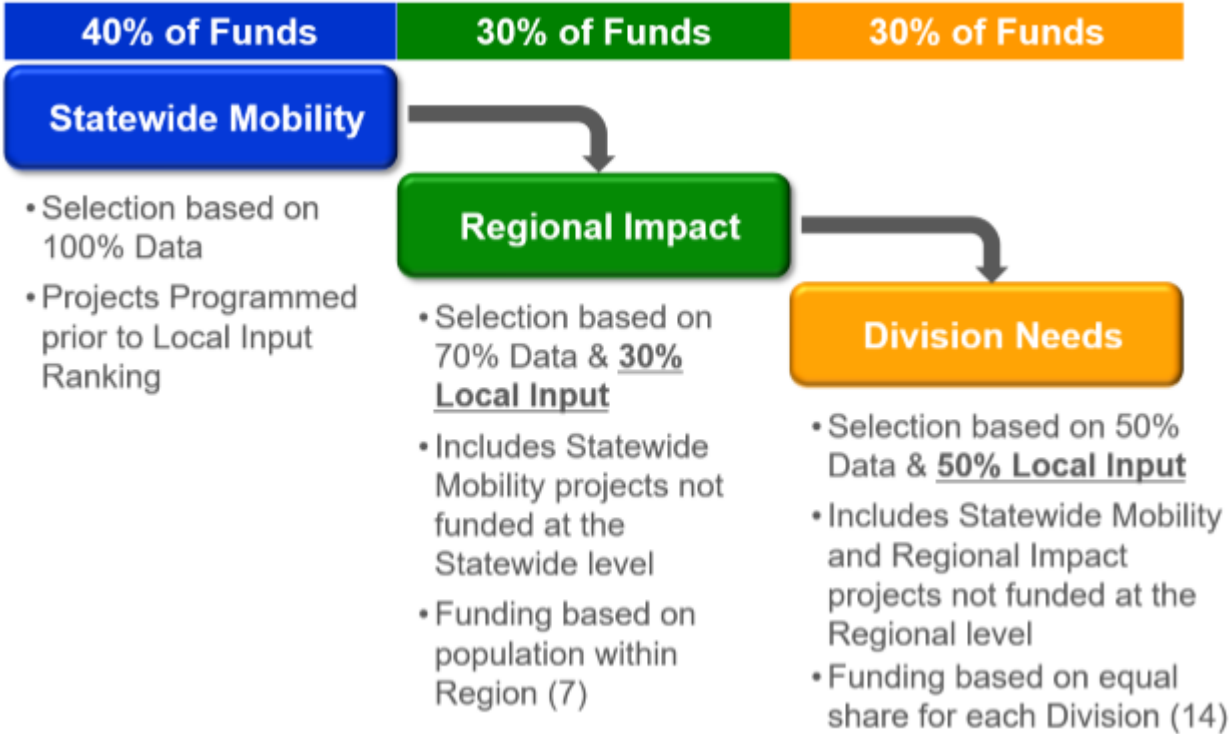
*Creative Regional Solutions Since 1968*

# Prioritization Update

Transportation Advisory Committee

February 26, 2020

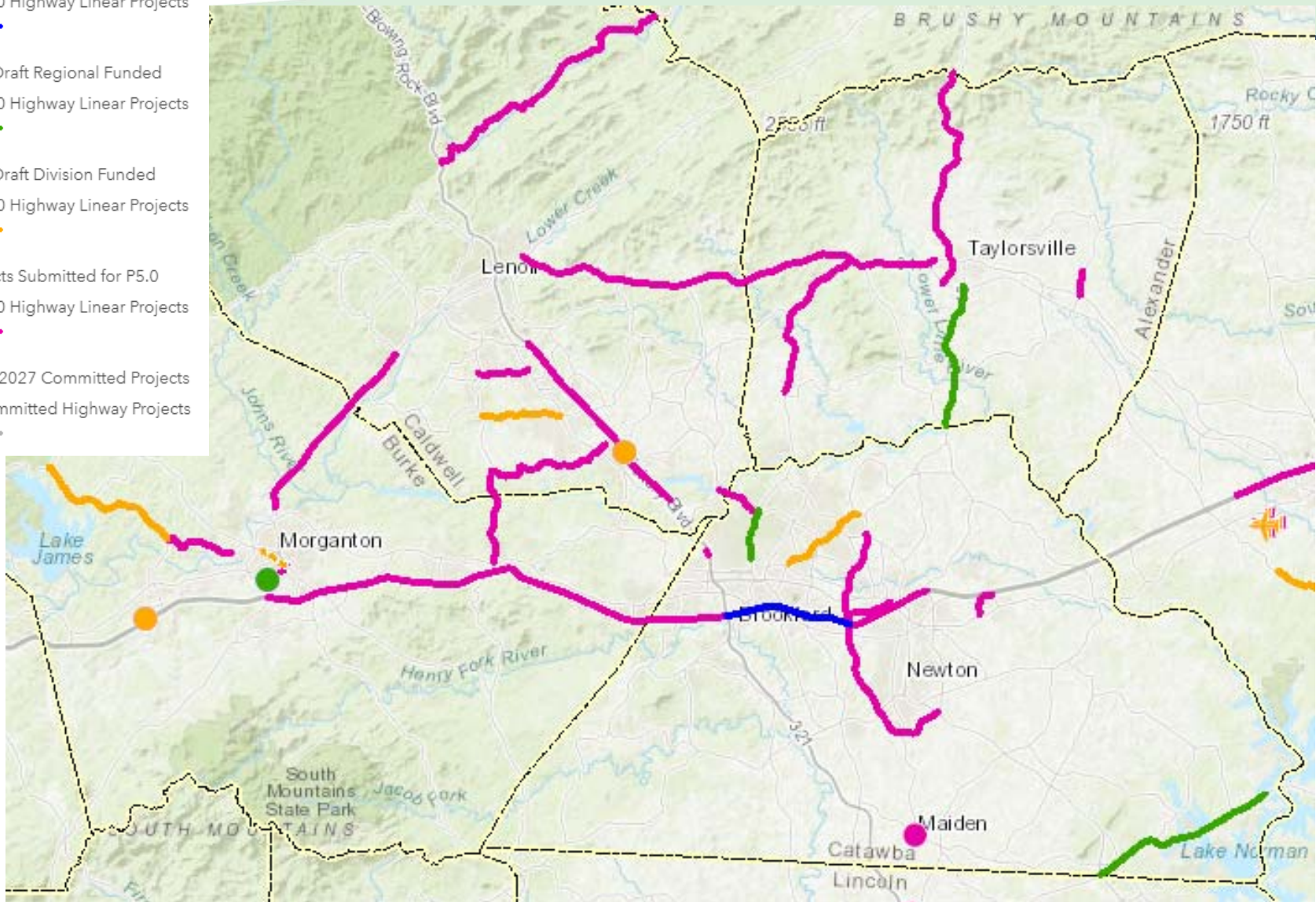
# Prioritization Process



Local input split 50/50 between GHMPO and NCDOT Divisions 11, 12, 13  
GHMPO scores = 15% of Regional Impact, 25% of Division Needs

# Past Round (P-5.0) Submittals

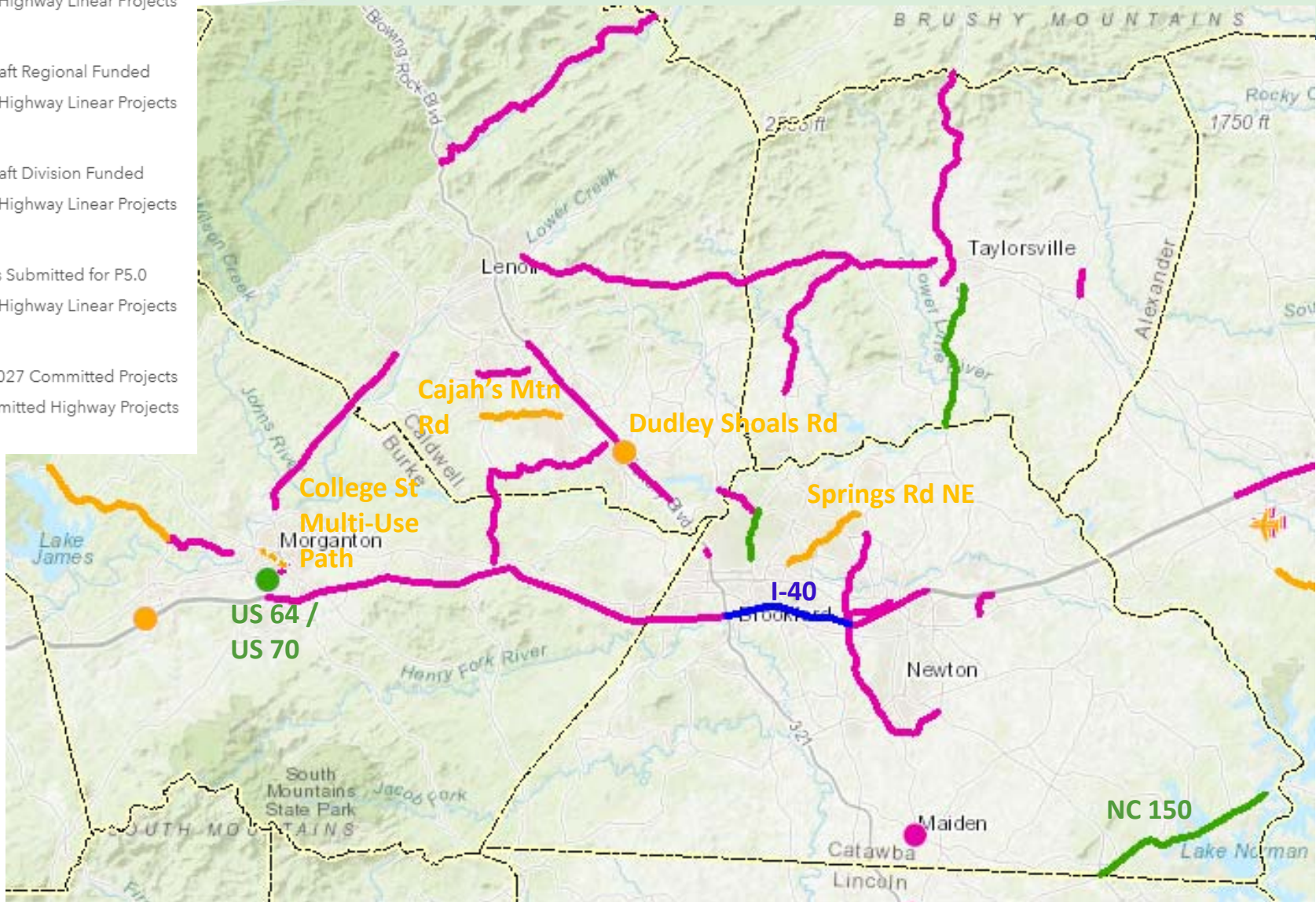
- NCDOT P5.0 Projects
  - P5.0 Draft Statewide Funded
    - P5.0 Highway Linear Projects
- P5.0 Draft Regional Funded
  - P5.0 Highway Linear Projects
- P5.0 Draft Division Funded
  - P5.0 Highway Linear Projects
- Projects Submitted for P5.0
  - P5.0 Highway Linear Projects
- 2018-2027 Committed Projects
  - Committed Highway Projects





# Committed Projects (6 Highway & 1 Bike-Ped)

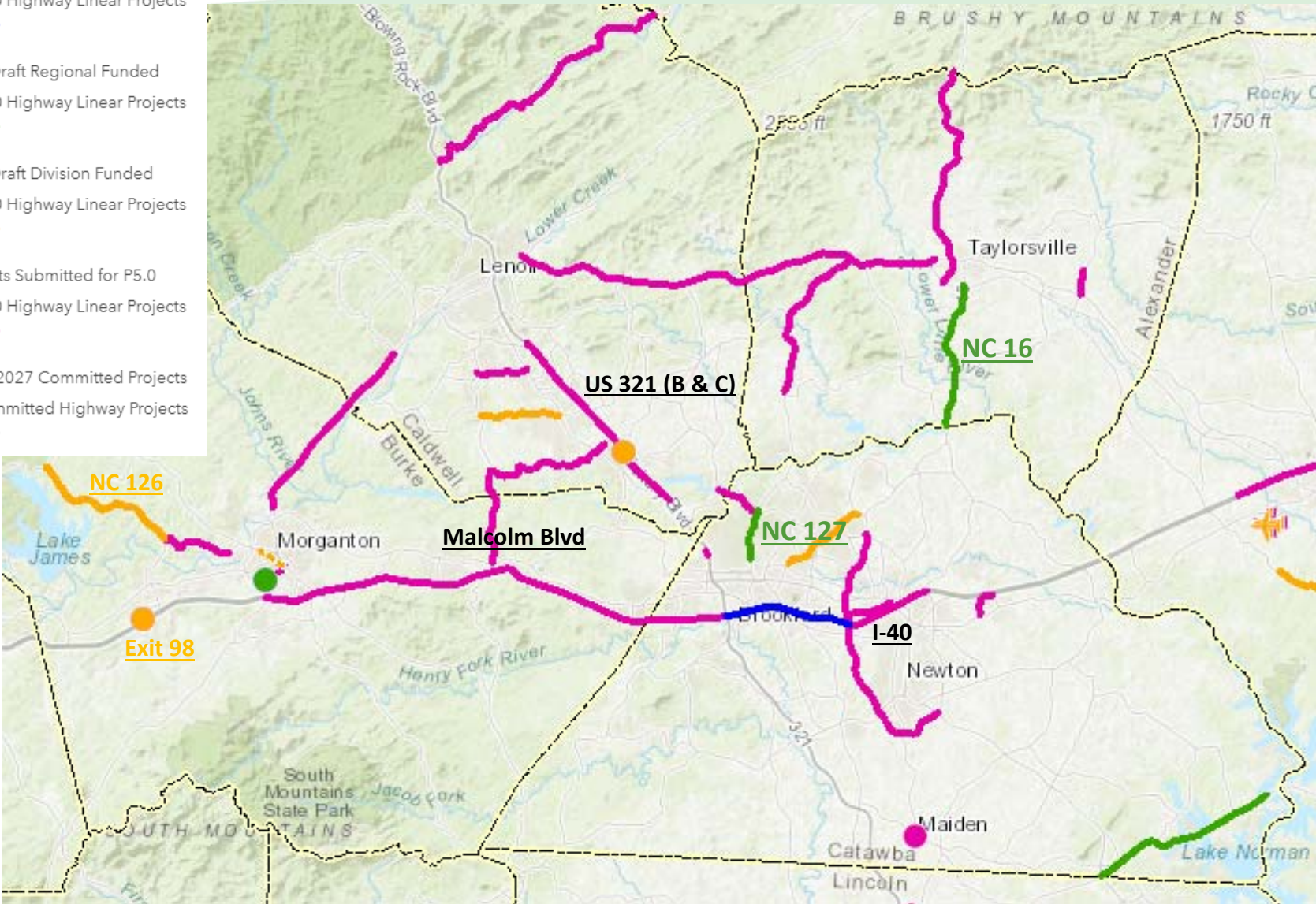
- NCDOT P5.0 Projects
- P5.0 Draft Statewide Funded
  - P5.0 Highway Linear Projects —
- P5.0 Draft Regional Funded
  - P5.0 Highway Linear Projects —
- P5.0 Draft Division Funded
  - P5.0 Highway Linear Projects —
- Projects Submitted for P5.0
  - P5.0 Highway Linear Projects —
- 2018-2027 Committed Projects
  - Committed Highway Projects —





# Carryover Projects (8)

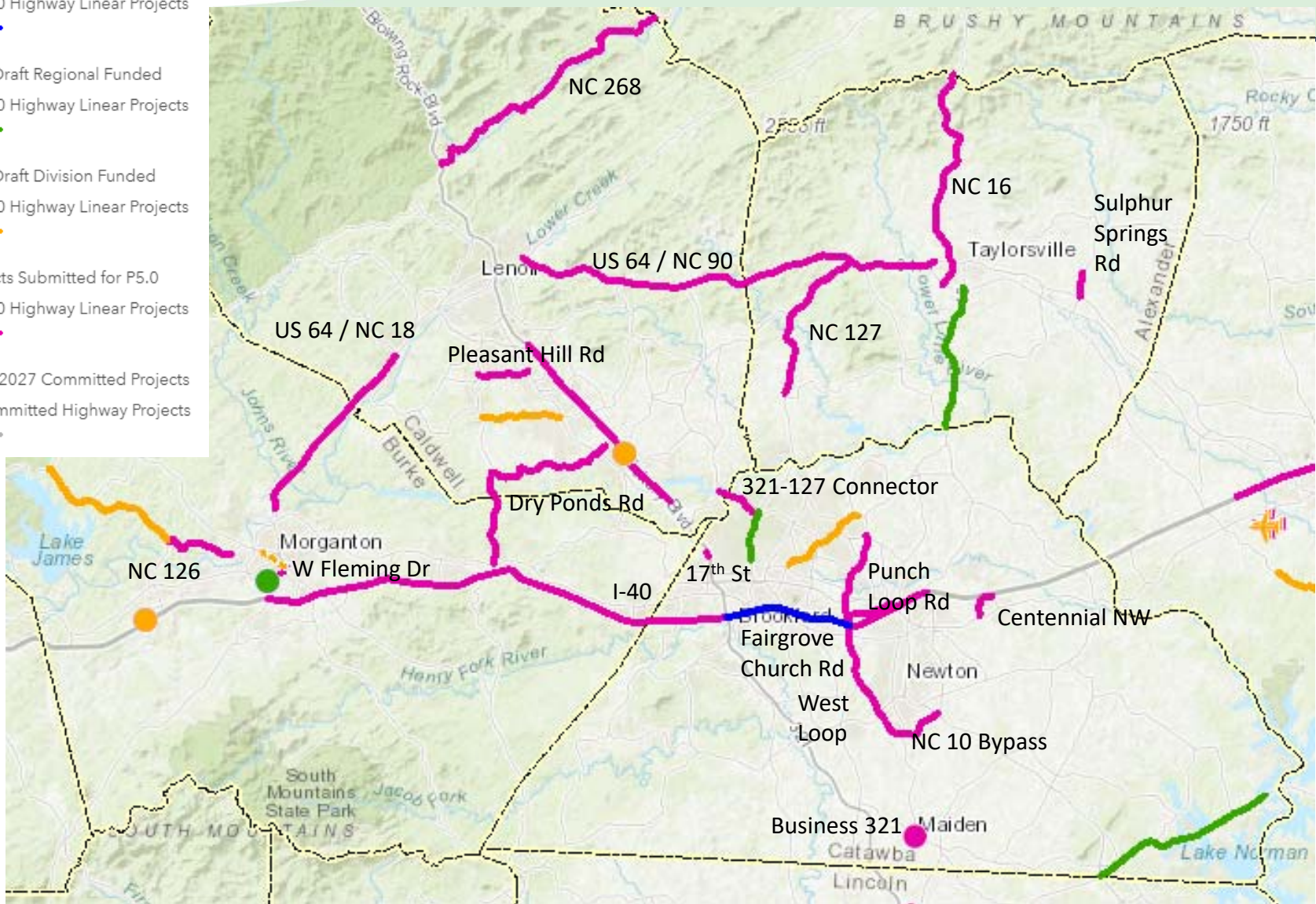
- NCDOT P5.0 Projects
- P5.0 Draft Statewide Funded
  - P5.0 Highway Linear Projects
- P5.0 Draft Regional Funded
  - P5.0 Highway Linear Projects
- P5.0 Draft Division Funded
  - P5.0 Highway Linear Projects
- Projects Submitted for P5.0
  - P5.0 Highway Linear Projects
- 2018-2027 Committed Projects
  - Committed Highway Projects





# Holding Tank Projects (18 Highway & 1 Bike-Ped)

- NCDOT P5.0 Projects
- P5.0 Draft Statewide Funded
  - P5.0 Highway Linear Projects —
- P5.0 Draft Regional Funded
  - P5.0 Highway Linear Projects —
- P5.0 Draft Division Funded
  - P5.0 Highway Linear Projects —
- Projects Submitted for P5.0
  - P5.0 Highway Linear Projects —
- 2018-2027 Committed Projects
  - Committed Highway Projects —



# New (P-6.0) Submittals – Alexander County

## Carryover Project (1)

NC 16: Catawba River to Taylorsville\*

## Re-submitted Project (1)

NC 127: Richey Rd to US 64 / NC 90

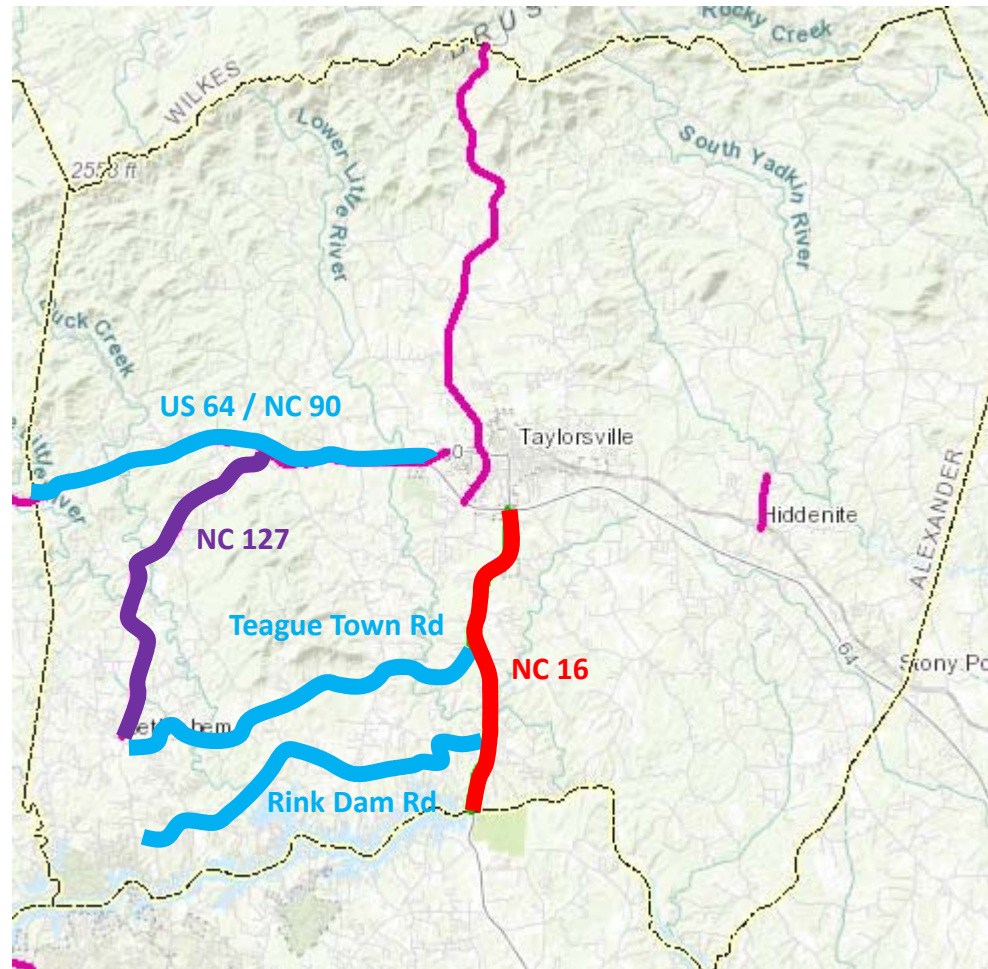
## New Projects (3)

US 64 / NC 90: Taylorsville to Caldwell County\*

Rink Dam Rd: NC 127 to NC 16

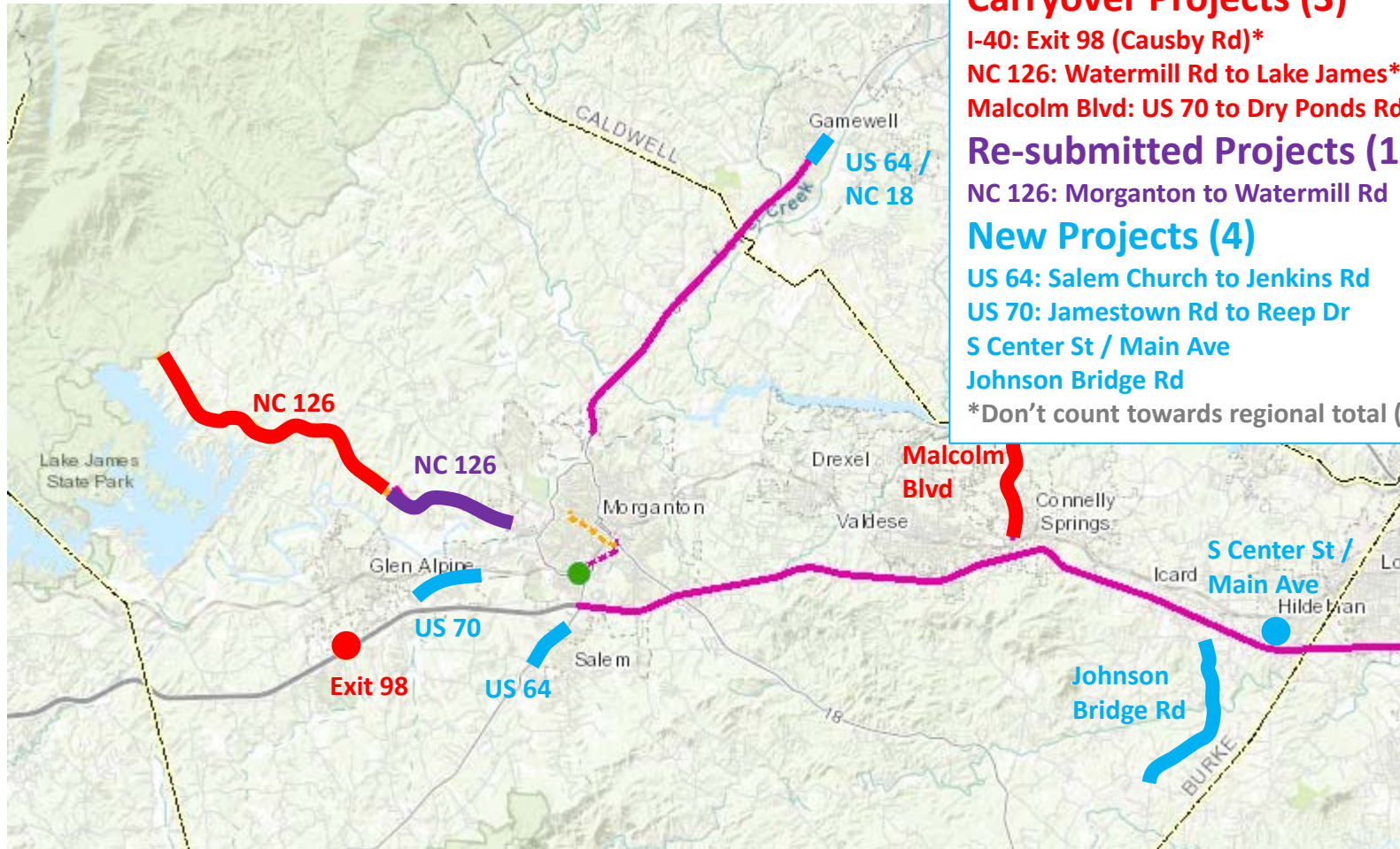
Teague Town Rd: NC 127 to NC 16

\*Don't count towards regional total (25)





# New (P-6.0) Submittals – Burke County





# New (P-6.0) Submittals – Caldwell County

## Carryover Projects (2)

US 321: 321A to Mission Rd\*

US 321: Mission Rd to Southwest Blvd\*

Malcolm Blvd: US 70 to Dry Ponds Rd\*

## Re-submitted Projects (1)

Dry Ponds Rd: Pinewood Rd to Connelly Springs Rd

## New Projects (7)

US 321 / 321 A / River Bend Dr\*

US 64 / NC 18: Rocky Rd to Pinehurst St

US 64 / NC 90 Wilkesboro Blvd

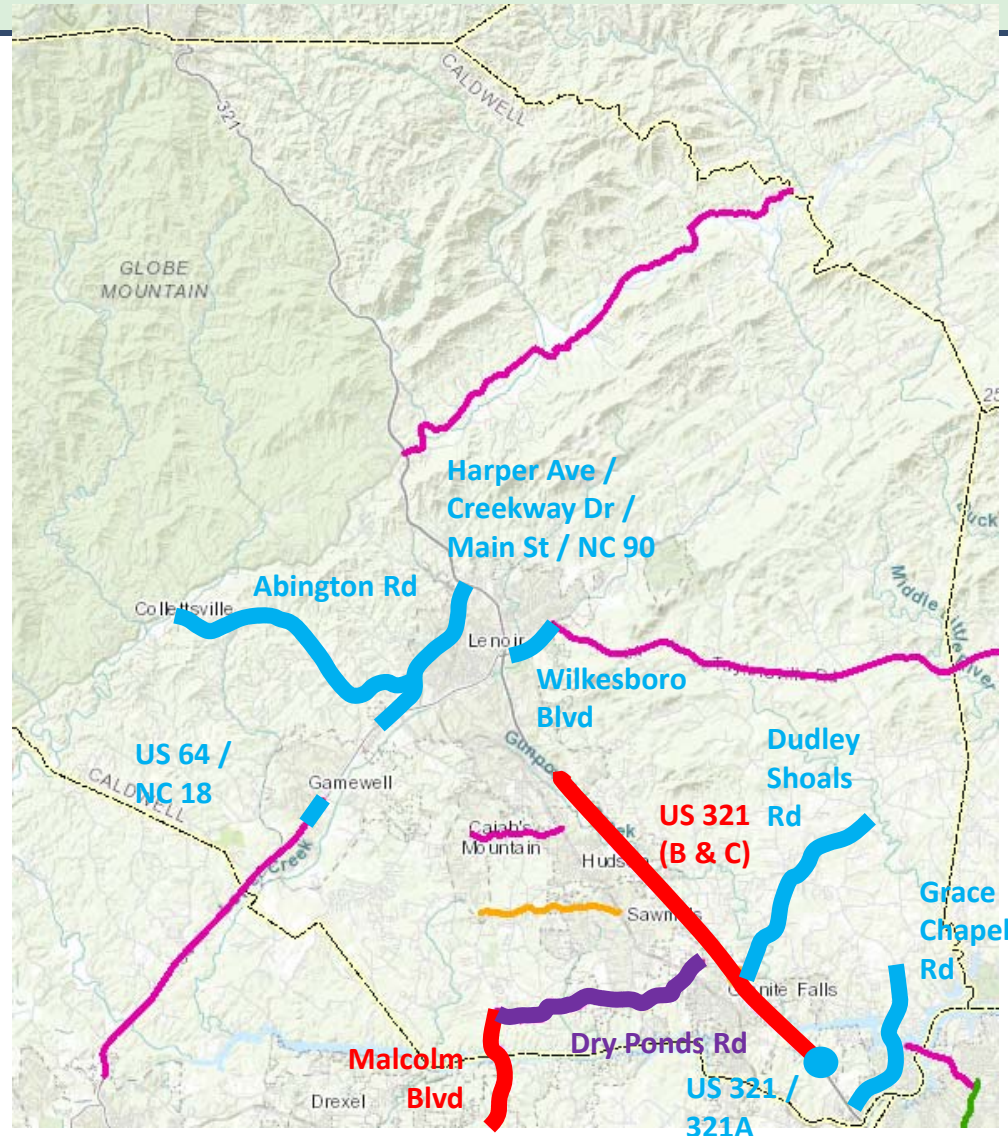
Abington Rd: Harper Ave to NC 90

Dudley Shoals Rd: US 321 to Bowman Rd

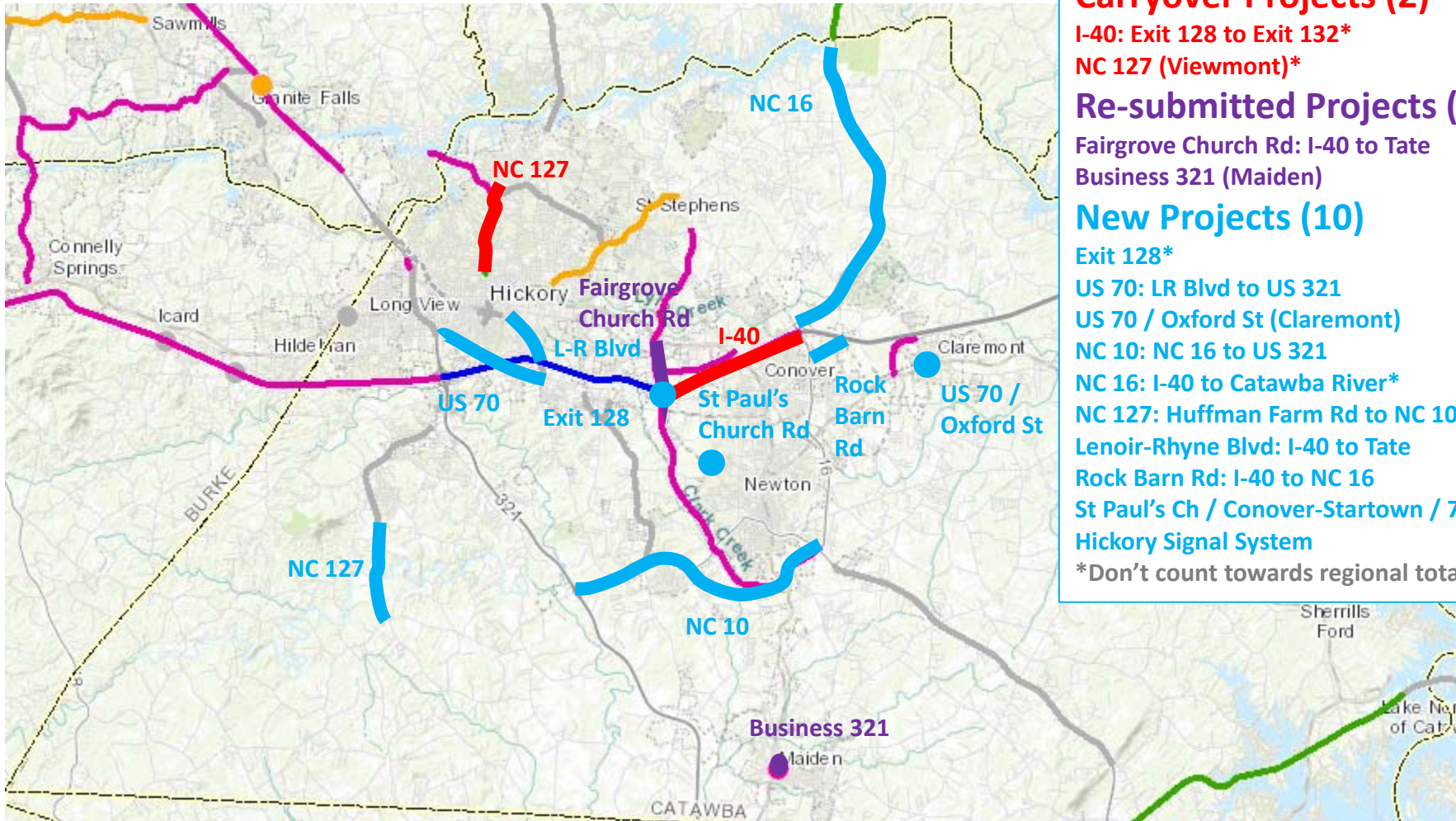
Grace Chapel Rd: US 321 to Petra Mill Rd

Harper Ave / Creekway Dr NW / NC 90

\*Don't count towards regional total (25)



# New (P-6.0) Submittals – Catawba County



## Carryover Projects (2)

I-40: Exit 128 to Exit 132\*

NC 127 (Viewmont)\*

## Re-submitted Projects (2)

Fairgrove Church Rd: I-40 to Tate  
Business 321 (Maiden)

## New Projects (10)

Exit 128\*

US 70: LR Blvd to US 321

US 70 / Oxford St (Claremont)

NC 10: NC 16 to US 321

NC 16: I-40 to Catawba River\*

NC 127: Huffman Farm Rd to NC 10

Lenoir-Rhyne Blvd: I-40 to Tate

Rock Barn Rd: I-40 to NC 16

St Paul's Ch / Conover-Startown / 7th

Hickory Signal System

\*Don't count towards regional total (25)



## Carryover Projects (8)\*

### Re-submitted Projects (5)

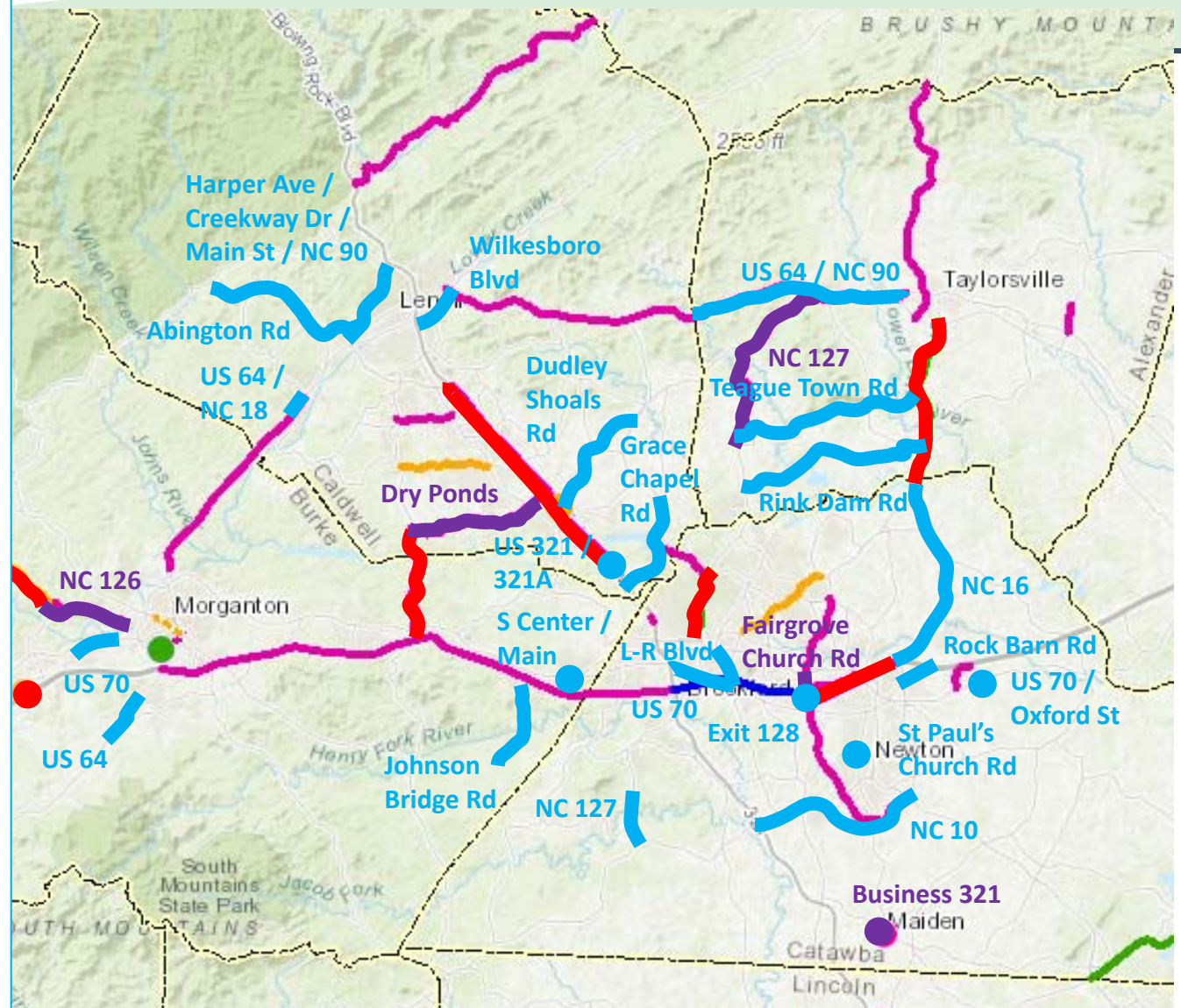
NC 126: Morganton to Watermill Rd  
NC 127: Richey Rd to US 64 / NC 90  
Dry Ponds Rd: Pinewood Rd to Connelly Springs Rd  
Fairgrove Church Rd: I-40 to Tate  
Business 321 (Maiden)

### New Projects (23)

I-40: Exit 128\*  
US 321 / 321 A / River Bend Dr\*  
US 64 (Salem)  
US 64 / NC 18: Rocky Rd to Pinehurst St  
US 64 / NC 90 (Alexander County)  
US 64 / NC 90 (Wilkesboro Blvd)  
US 70 (Carbon City Blvd)  
US 70: LR Blvd to US 321  
US 70 / Oxford St (Claremont)  
NC 10: NC 16 to US 321  
NC 16: I-40 to Catawba River\*  
NC 127: Huffman Farm Rd to NC 10  
Abington Rd: Harper Ave to NC 90  
S Center St / Main Ave (Hildebran)  
Dudley Shoals: US 321 to Grace Chapel  
Grace Chapel: US 321 to Petra Mill Rd  
Harper Ave / Creekway Dr NW / NC 90  
Lenoir-Rhyne Blvd: I-40 to Tate  
Johnson Bridge Rd  
Rink Dam Rd: NC 16 to NC 127  
Rock Barn Rd: I-40 to NC 16  
St Paul's Ch / Conover-Startown / 7th  
Teague Town Rd: NC 16 to NC 127  
Hickory Signal System (not mapped)

\*Don't count toward total (25)

## New Round (6.0) Submittals – MPO Region



# Non-Highway Projects to be Evaluated

## Aviation Projects (2)

- Hanger Upgrades (Foothills Airport)
- Terminal Expansion (Foothills Airport)

## Bike-Ped Projects (3)

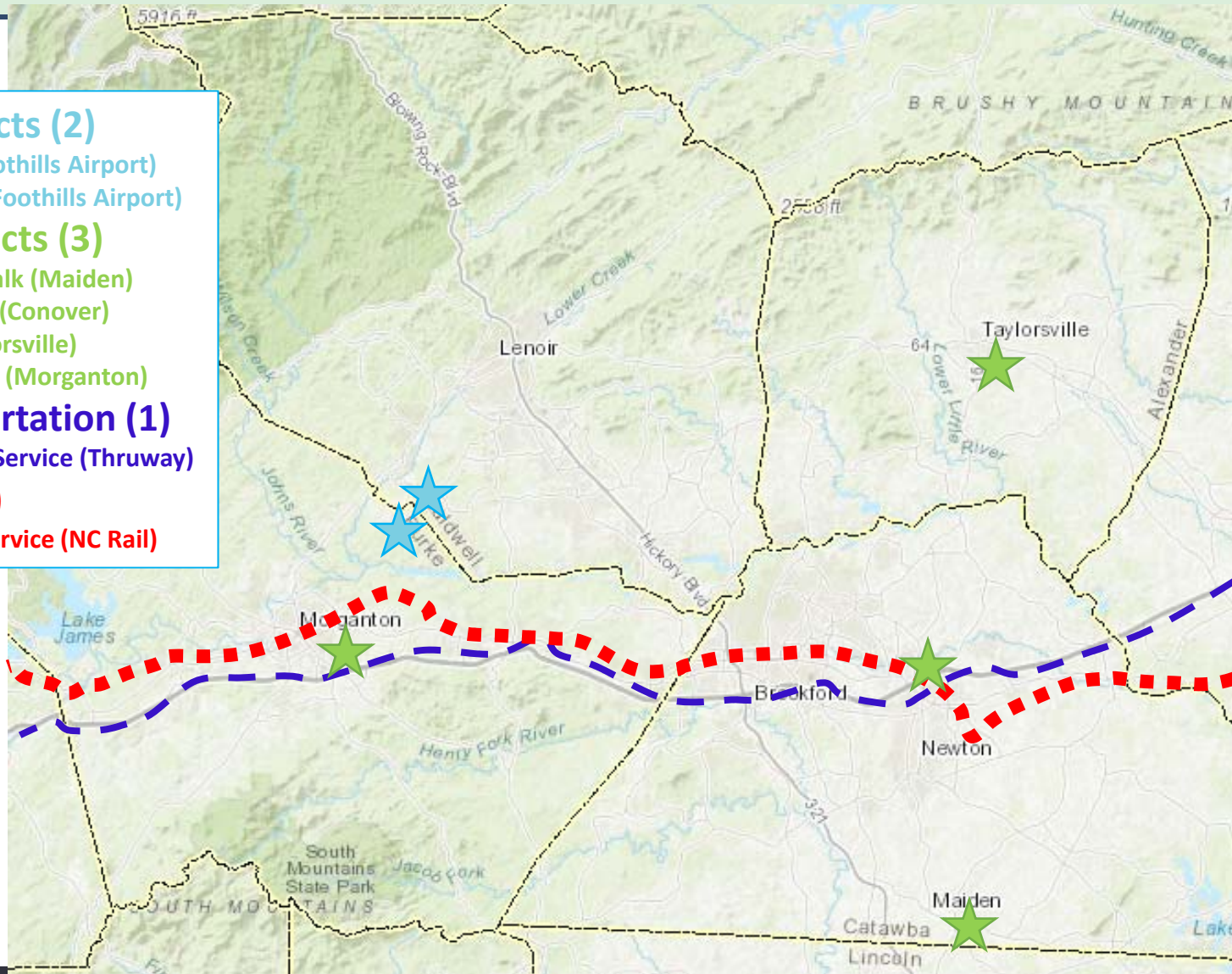
- Island Ford Rd Sidewalk (Maiden)
- Lyle Creek Connector (Conover)
- NC 16 Sidewalk (Taylorsville)
- Broughton Connector (Morganton)

## Public Transportation (1)

- Salisbury – Asheville Service (Thruway)

## Rail Project (1)

- Raleigh – Asheville Service (NC Rail)







**Western Piedmont**  
Council of Governments

*Creative Regional Solutions Since 1968*

# Questions?

[brian.horton@wpcog.org](mailto:brian.horton@wpcog.org)

828-485-4225