

Traffic Analysis Zone 2040 Projections



**Greater Hickory MPO and Unifour RPO TAC and TCC Meetings
March 28, 2013**

What is a Traffic Analysis Zone (TAZ)?

A TAZ is a group of census blocks that has at least one major thoroughfare going through it or touching the zone boundary that can be used for transportation modeling and other purposes. Data is collected on population/housing and employment for the traffic demand model.



TAZ Methodology-

2040 Population/Housing Projections

- Meetings were held with planning staff throughout the region to determine 2040 housing/population projections.
- Total population numbers are checked with projections from the North Carolina Office of Management and Budget for reasonableness.

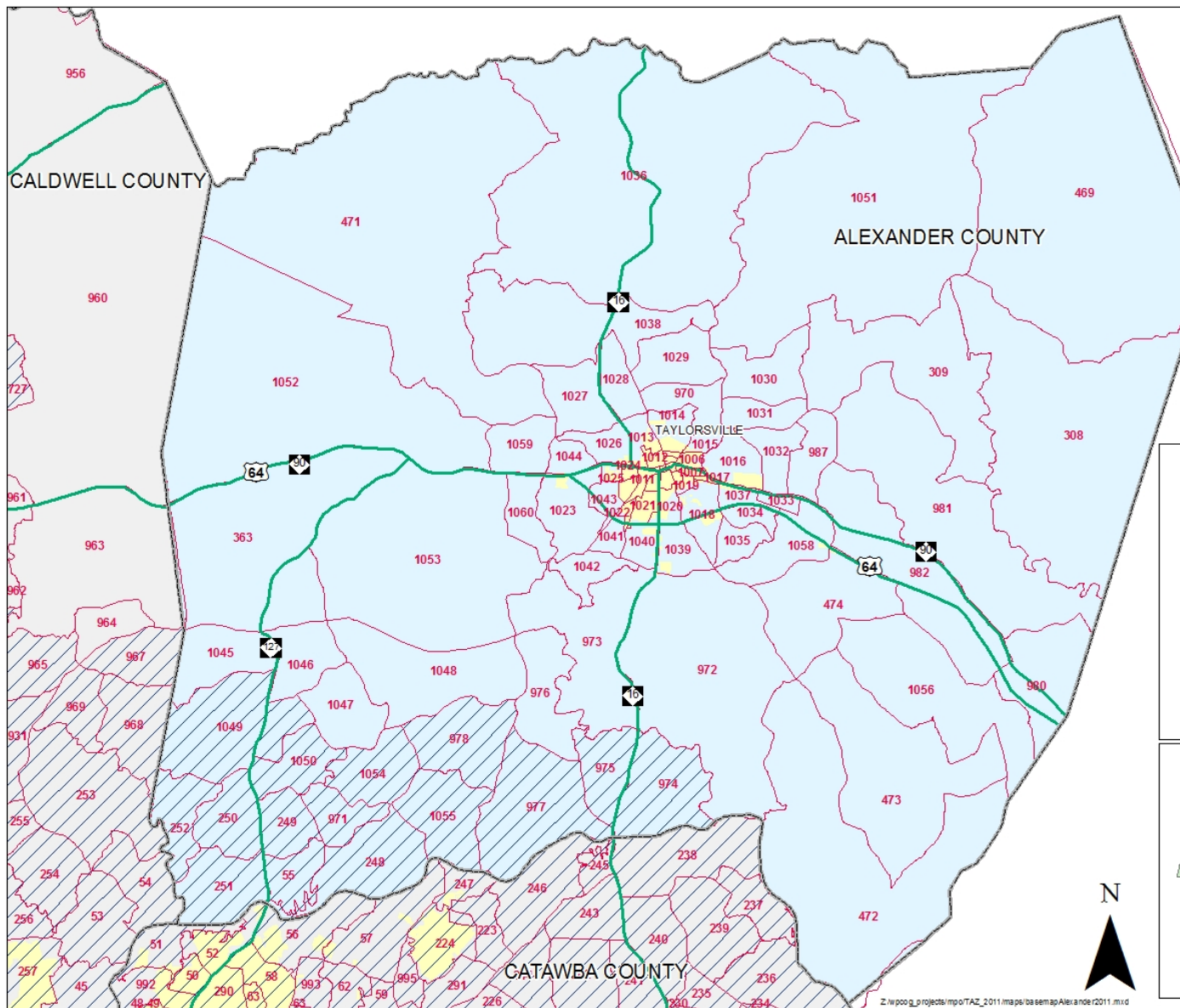
TAZ Methodology-

2040 Employment Data Collection

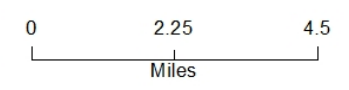
- Meetings were held with planning staff throughout the region to determine 2040 employment projections.
- 2040 employment projections are crosschecked with 2040 population projections for reasonableness.

Alexander County Maps

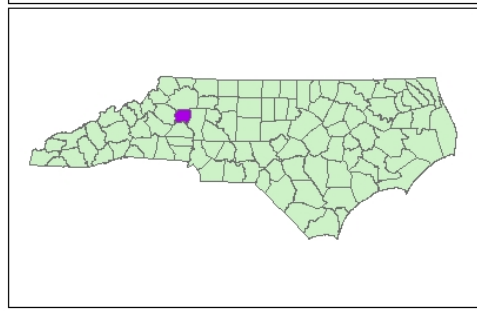




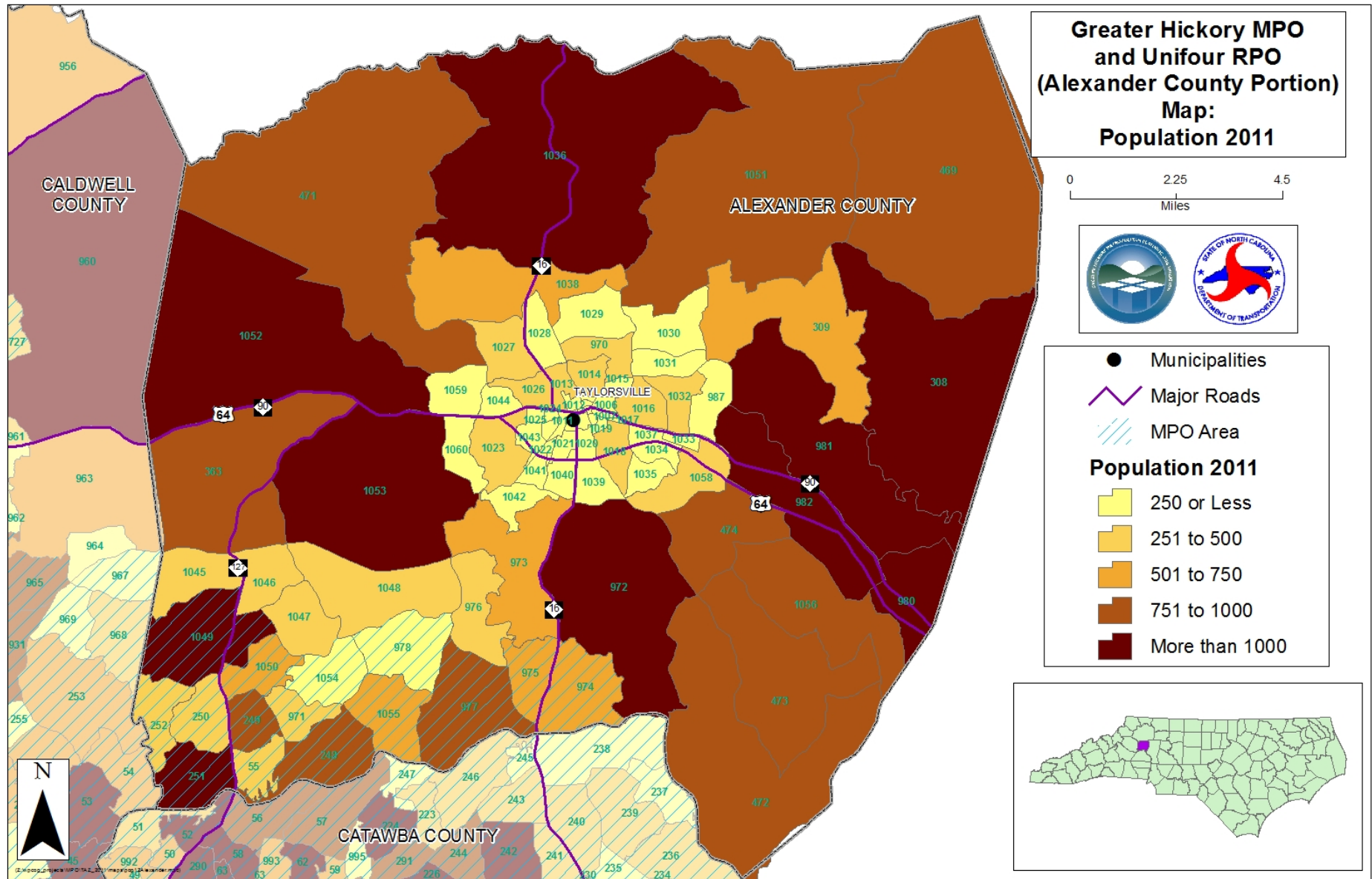
**Greater Hickory MPO
and Unifour RPO
(Alexander County Portion)
Map:
TAZ Locations**

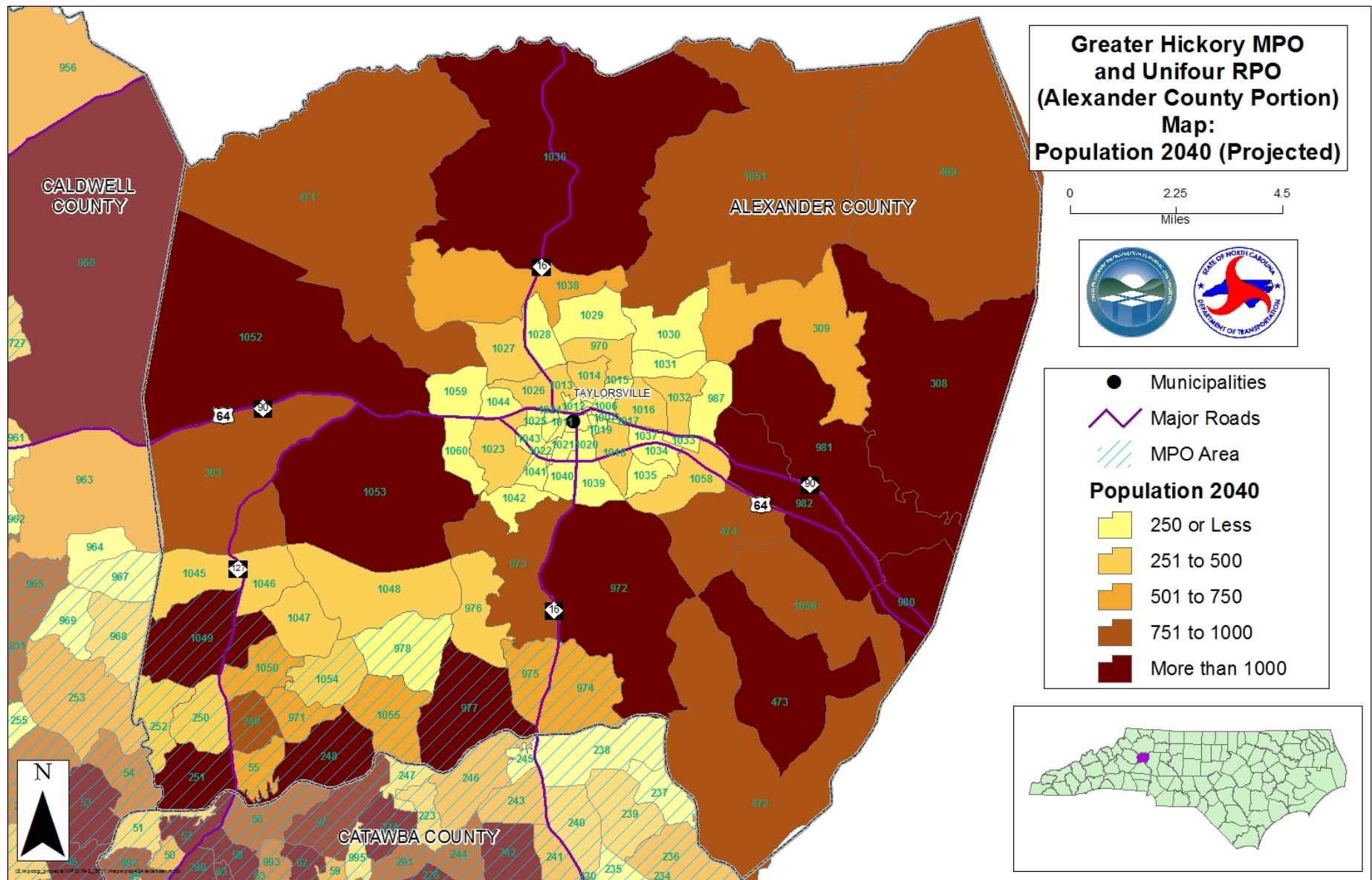


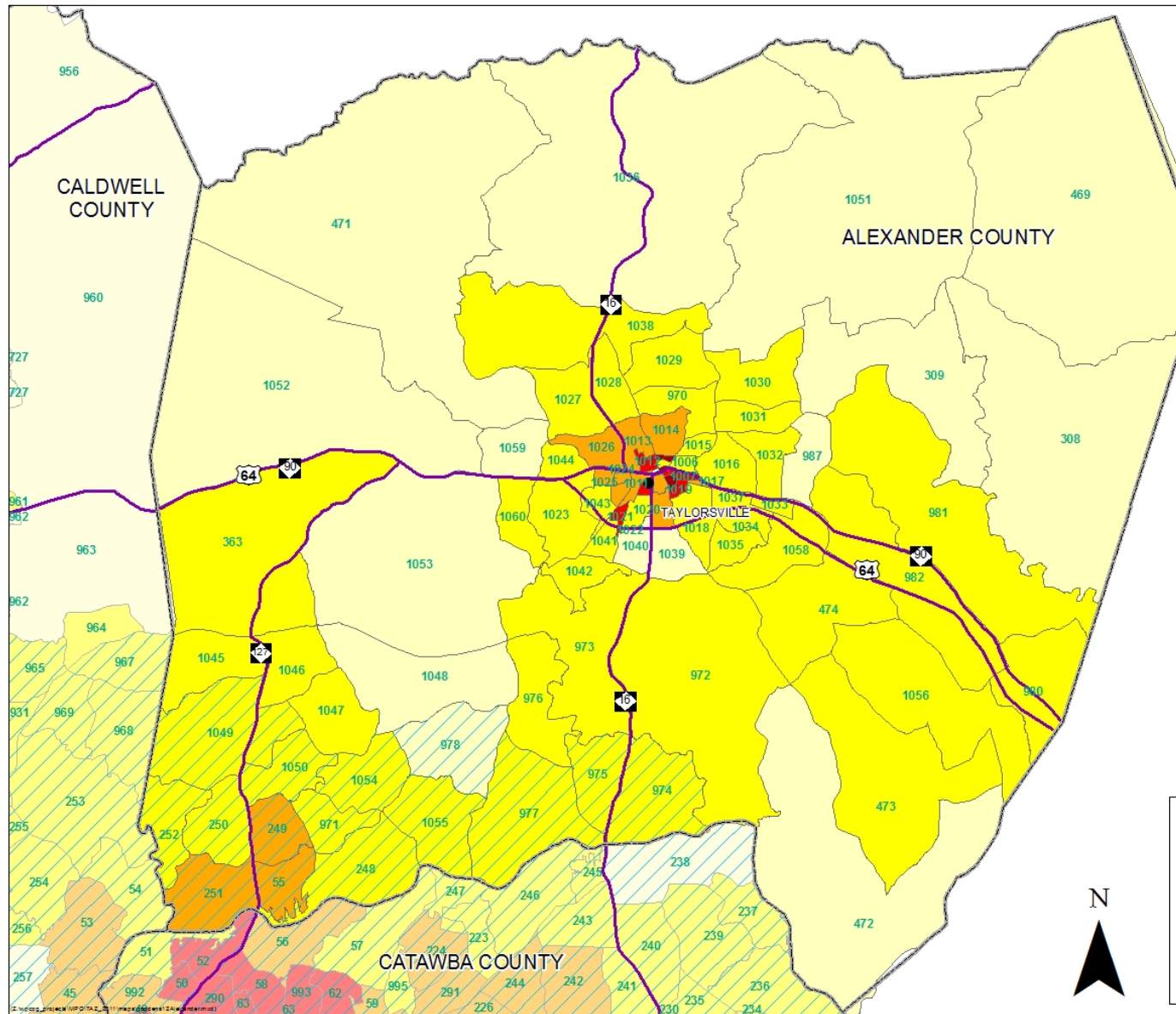
- Local Streets
- Major Roads
- TAZ Zones
- MPO Area
- Municipalities
- Alexander County
- Counties



Z:\wpoo\g_projects\mpo\TAZ_2011\maps\semap\alexander2011.mxd







**Greater Hickory MPO
and Unifour RPO
(Alexander County Portion)
Map:
Population Density 2011**

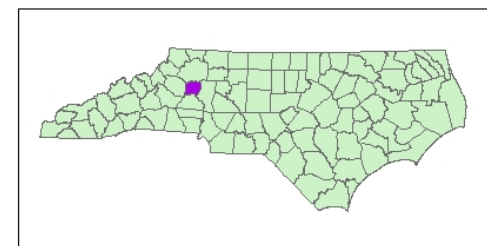


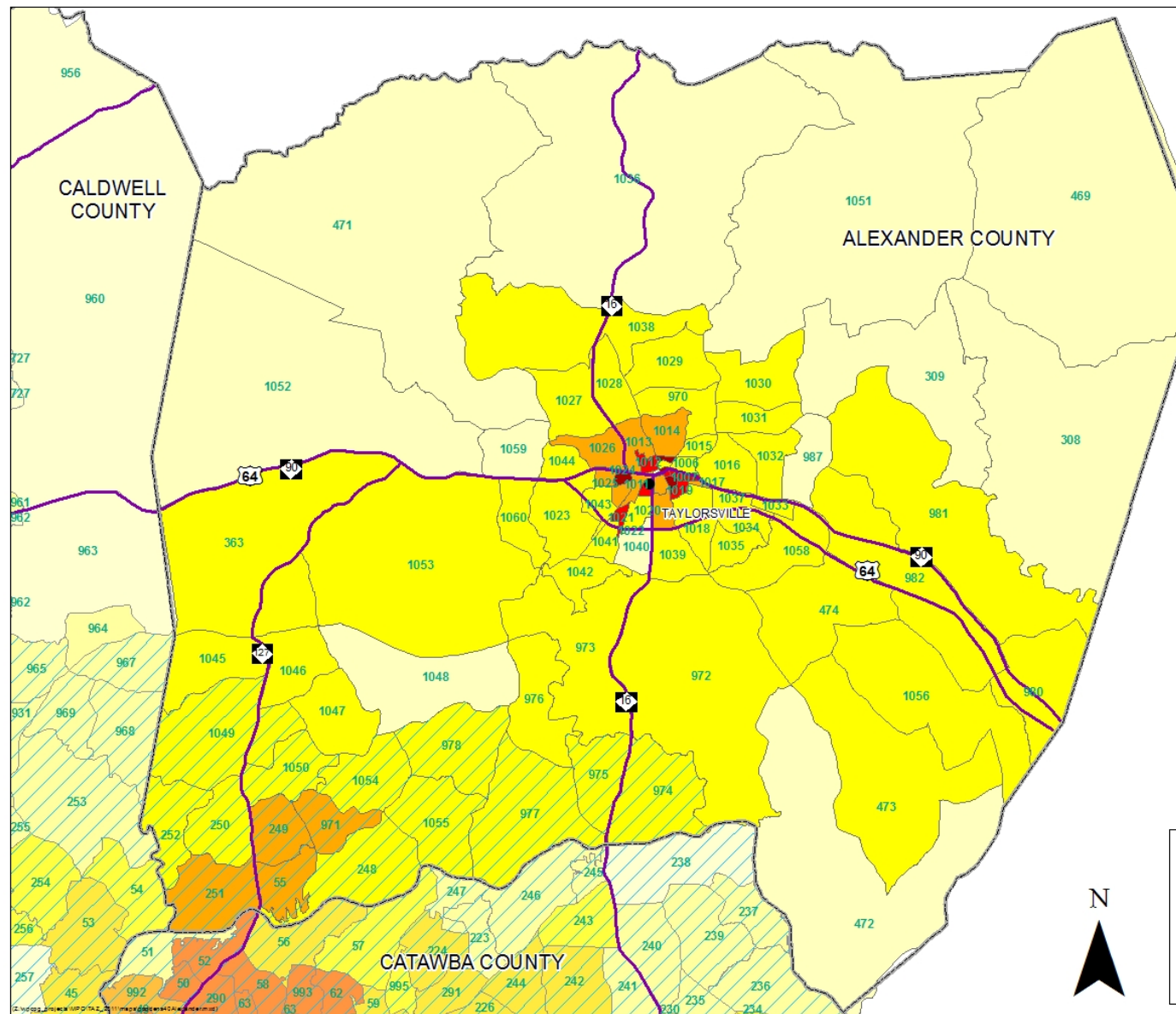
0 2.25 4.5
Miles

- Municipalities
- Major Roads
- MPO Area

**Population Density 2011
(Persons Per Square Mile)**

- 100 or Less
- 101 to 500
- 501 to 1000
- 1001 to 2000
- More than 2000



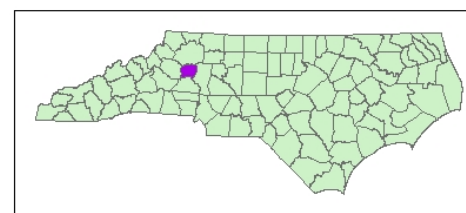


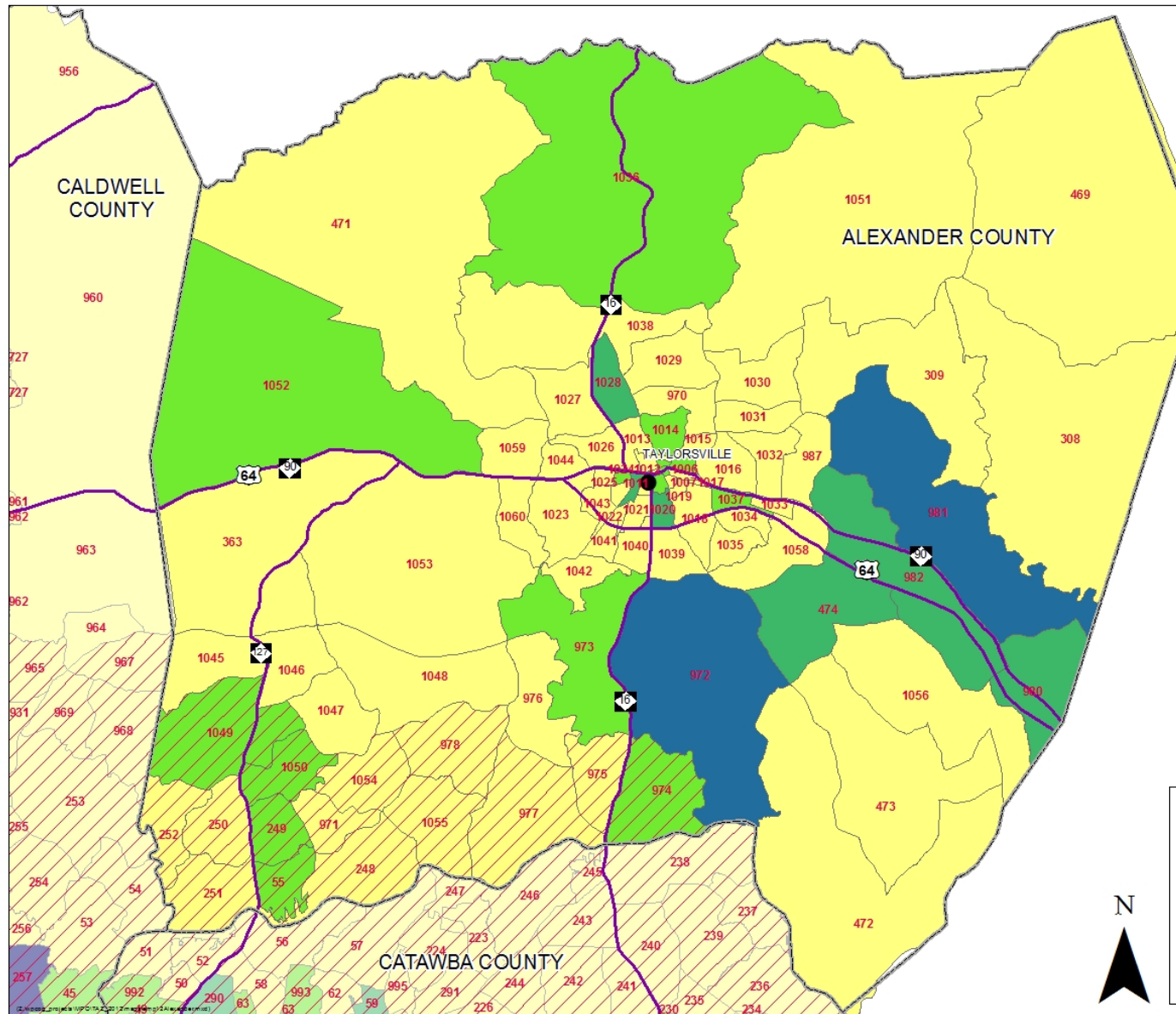
**Greater Hickory MPO
and Unifour RPO
(Alexander County Portion)
Map:
Population Density 2040
(Projected)**



0 2.25 4.5
Miles

- Municipalities
 - Major Roads
 - MPO Area
- Population Density 2040
(Persons Per Square Mile)**
- 100 or Less
 - 101 to 500
 - 501 to 1000
 - 1001 to 2000
 - More than 2000





**Greater Hickory MPO
and Unifour RPO
(Alexander County Portion)
Map:
Employment 2011**

0 2.25 4.5
Miles



● Municipalities

Major Roads

MPO Area

Employment 2011

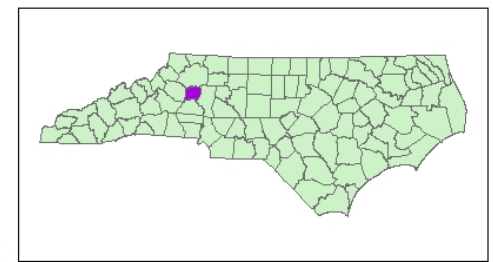
100 or Less

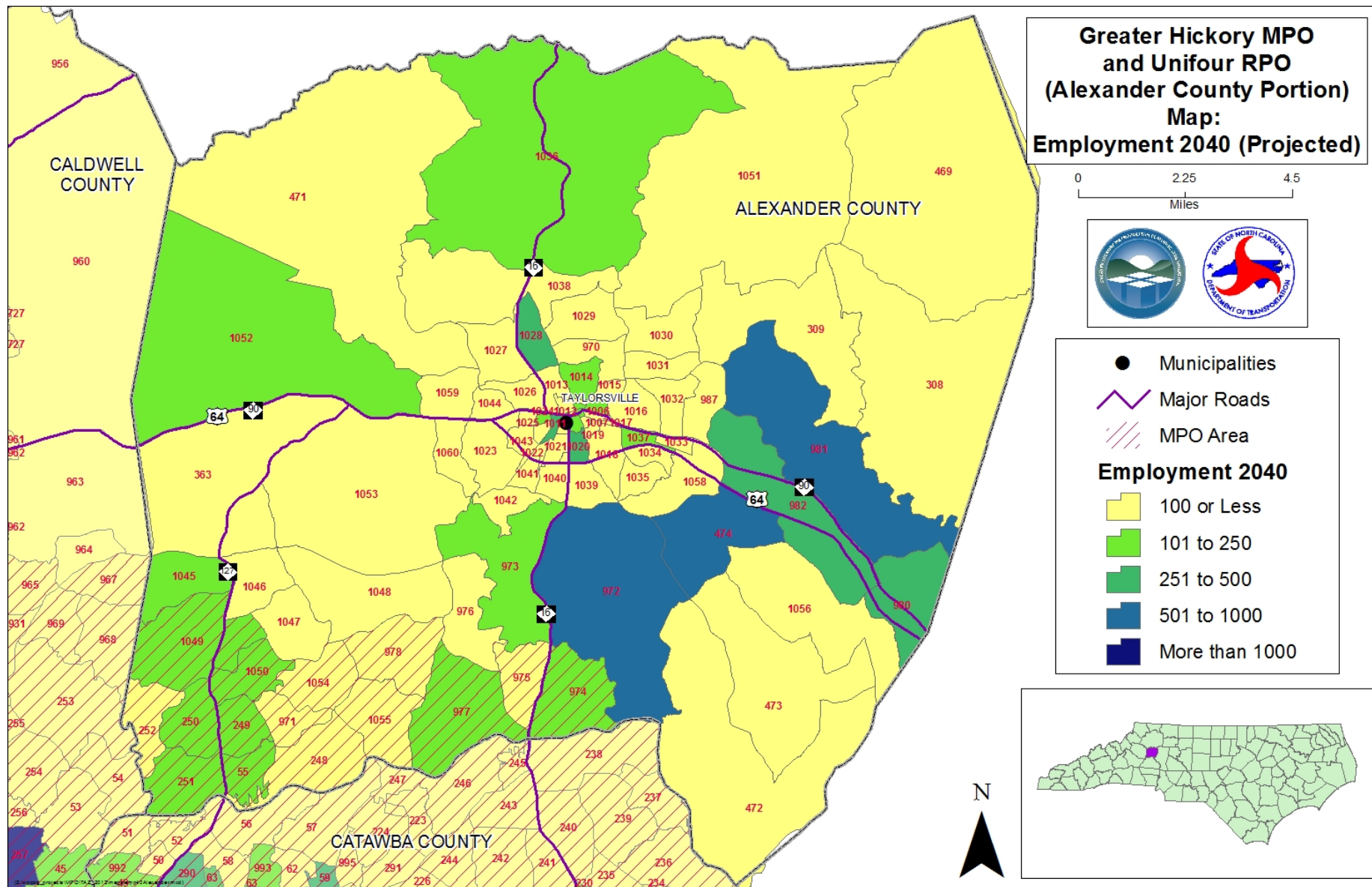
101 to 250

251 to 500

501 to 1000

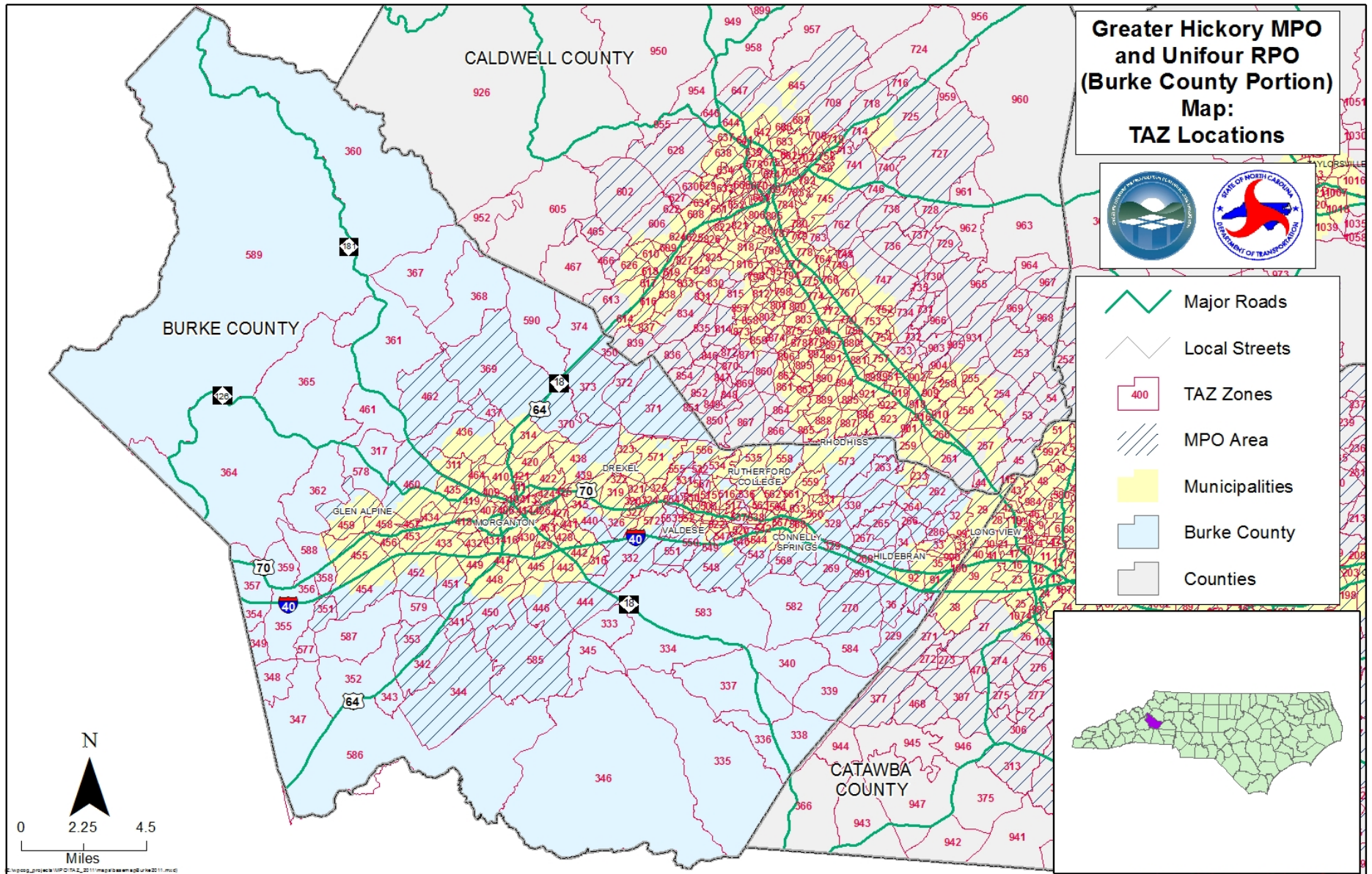
More than 1000

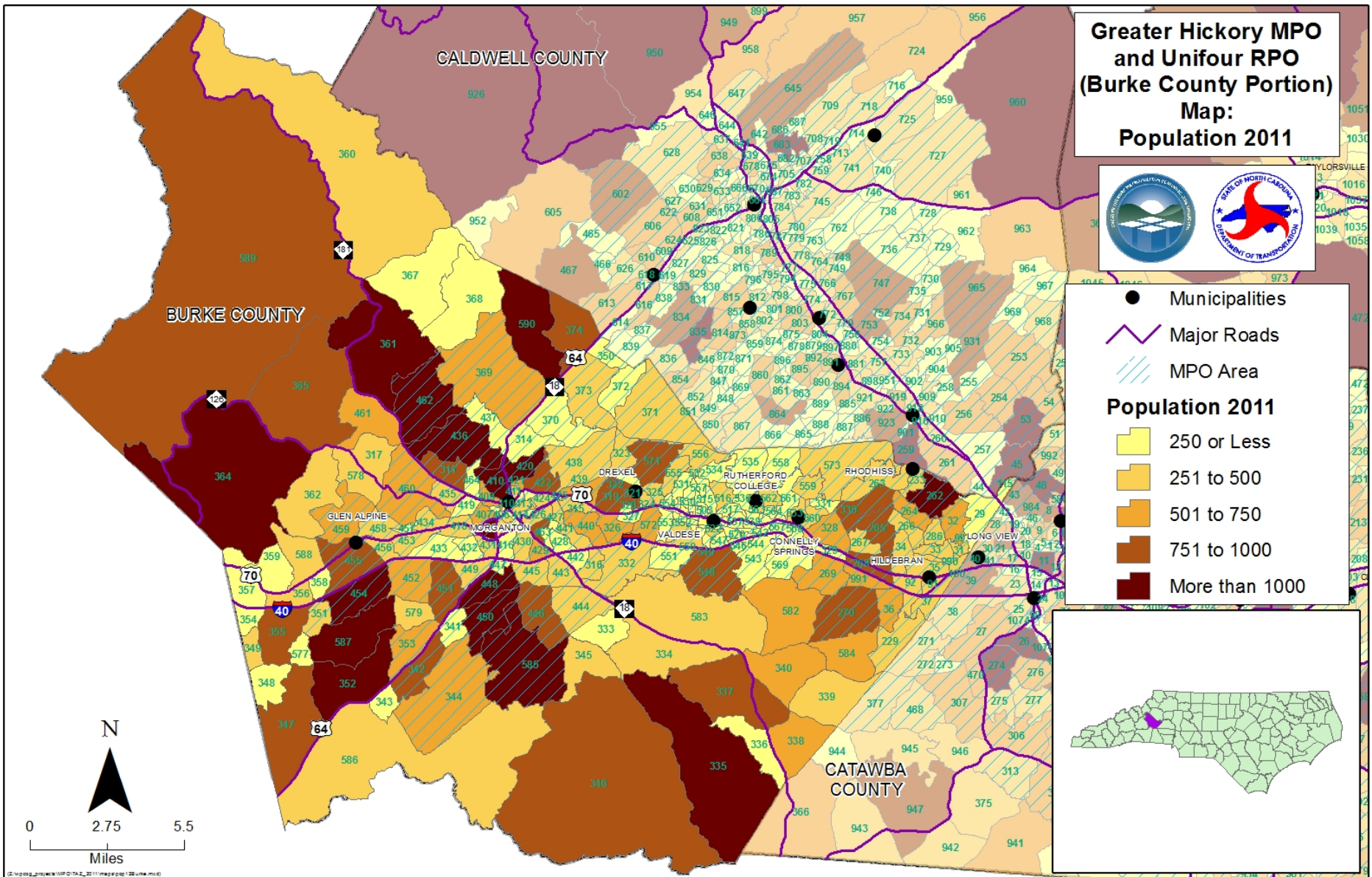


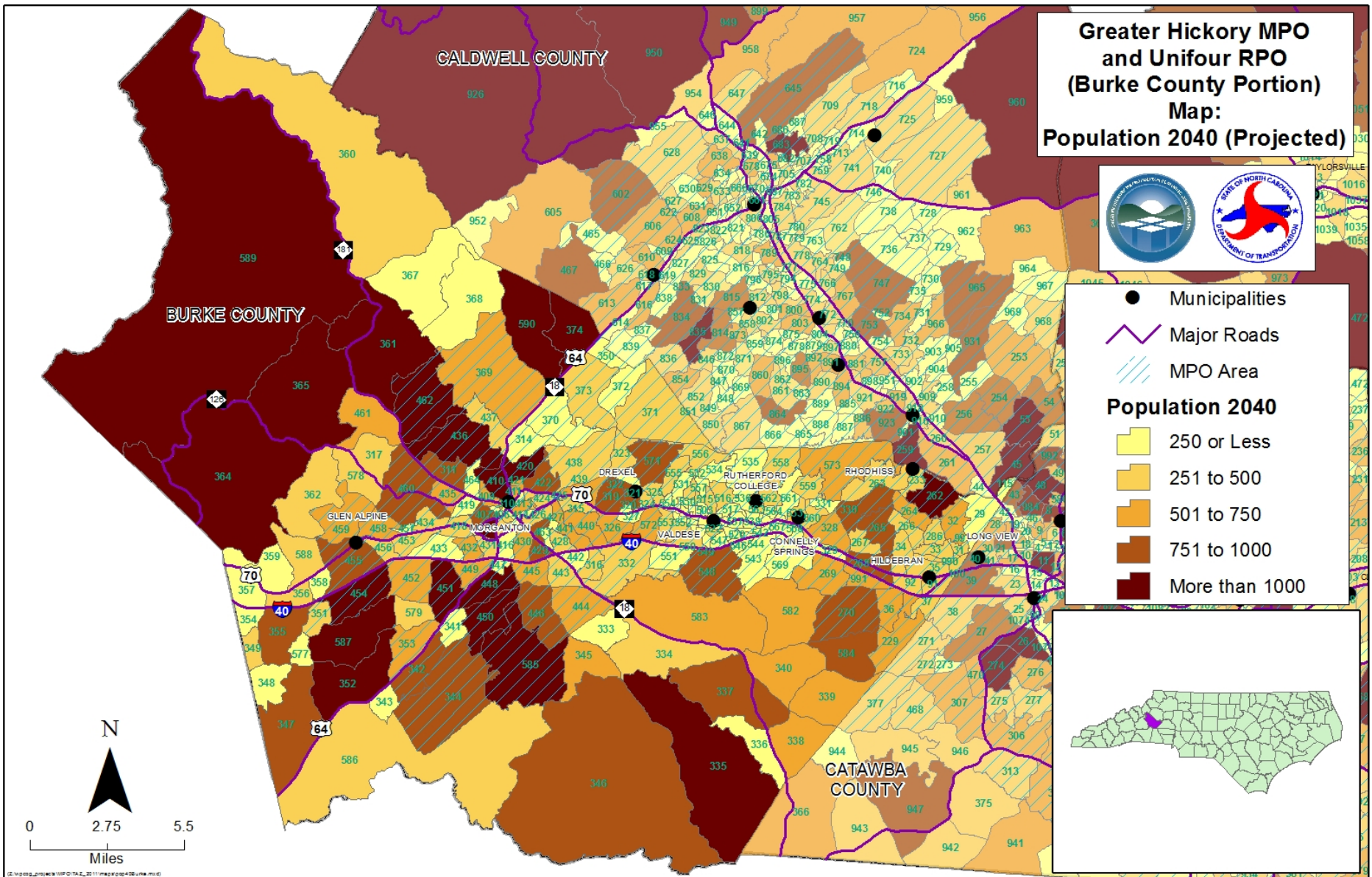


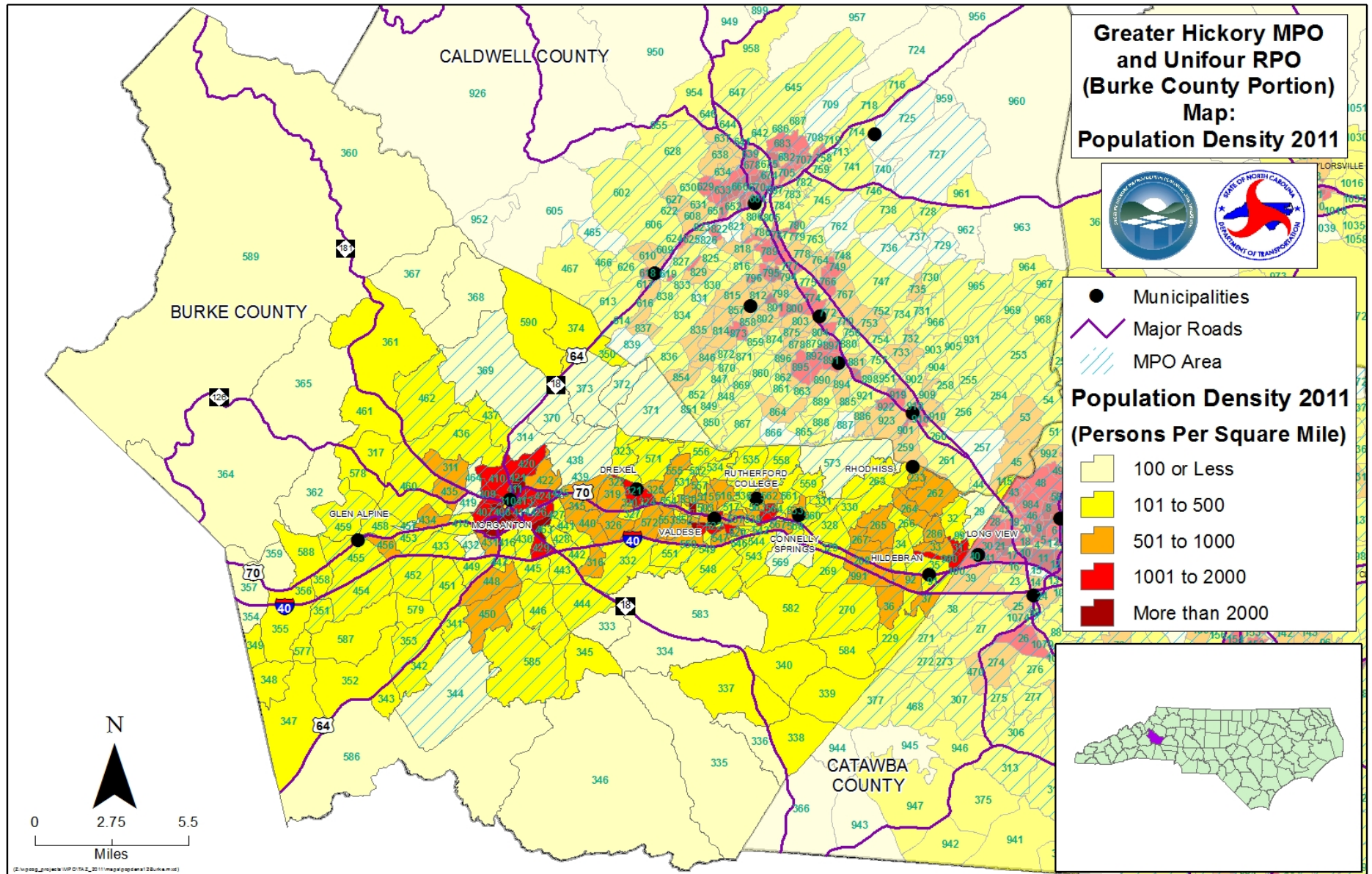
Burke County Maps

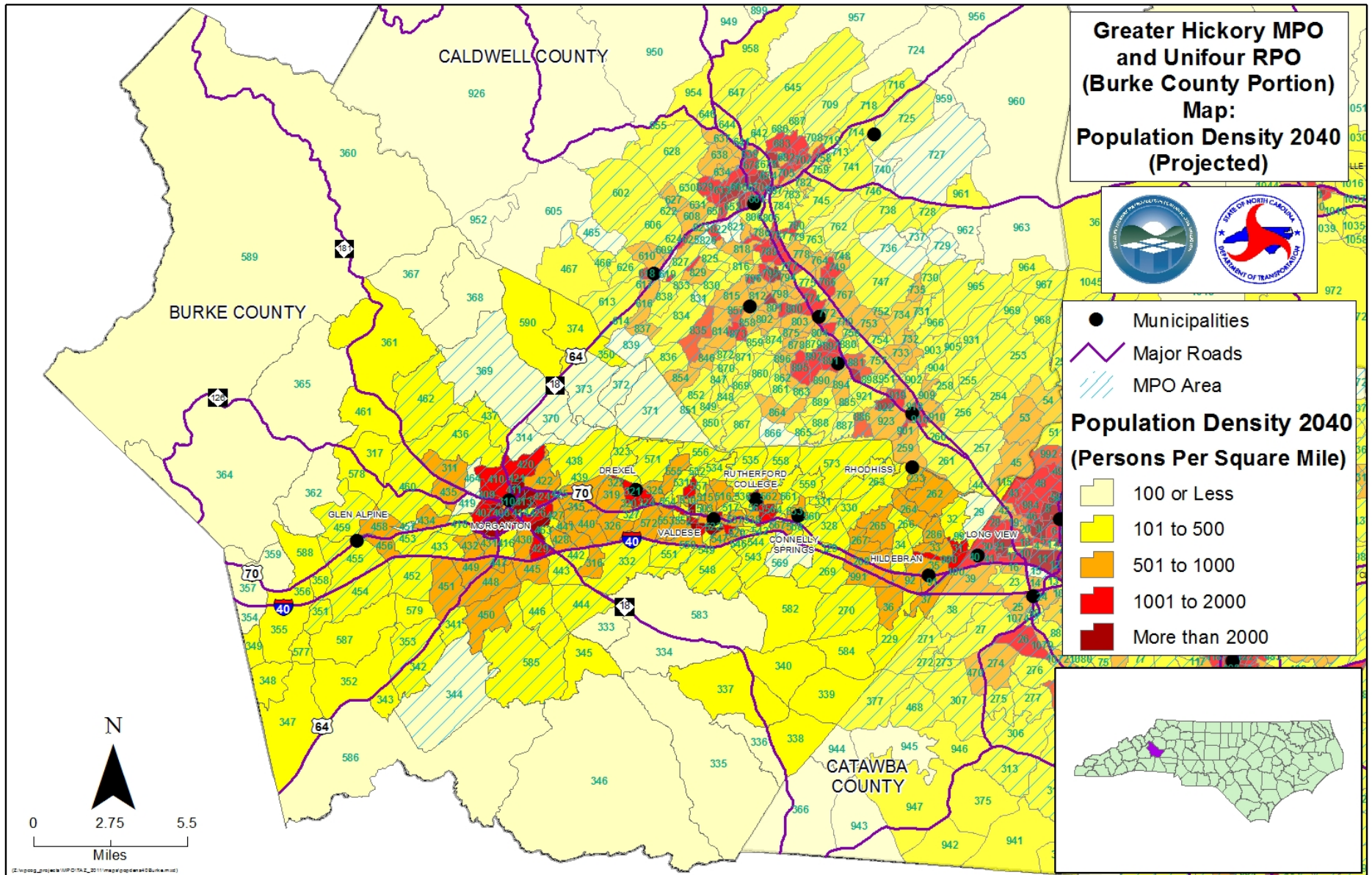


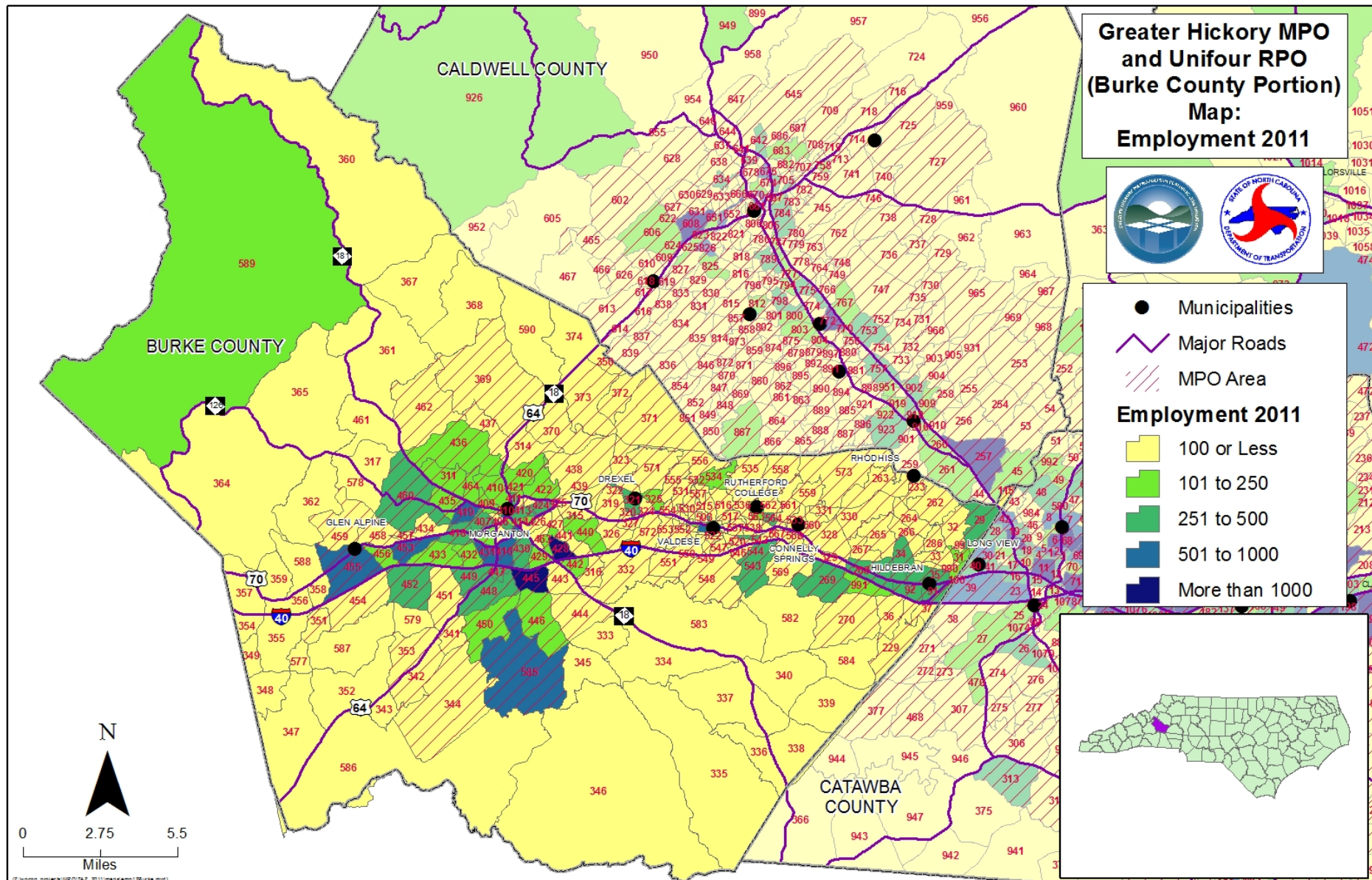












**Greater Hickory MPO
and Unifour RPO
(Burke County Portion)
Map:
Employment 2040 (Projected)**



- Municipalities
- Major Roads
- ▨ MPO Area
- Employment 2040**
- 100 or Less
- 101 to 250
- 251 to 500
- 501 to 1000
- More than 1000

